

Towers Wills

Town & Country

£375,000



1 Mountbatten Road, Yeovil, Somerset, BA21 5FR

Towers Wills welcome to the market this spacious five bedroom detached family home situated on the fringe of Yeovil in a quiet position with beautiful countryside walks close by. Briefly comprising: Hallway, cloak W.C, five double bedrooms, two reception rooms, feature kitchen / diner, utility room, dressing area & en-suite to master, two further bathrooms, driveway & double garage, rear garden. The property is presented to an immaculate standard throughout.

Key Features

- VIDEO TOUR AVAILABLE
- Spacious family home
- Five bedrooms
- Three bathrooms
- Feature open plan kitchen / diner
- Study

Entrance Hall

A spacious reception area with door to the front, radiator.

Cloakroom

Comprising W.C, wash hand basin, tiling, extractor fan, radiator.

Study

A versatile room, perfect for working from home or as a formal dining area. Radiator.

Living Room

A spacious dual aspect family living room with window to the front and patio doors to the rear garden. Two Radiators.

Kitchen/ Diner

Perfect for entertaining with family and friends this light and airy open plan area has a quality fitted kitchen comprising of a range of wall, base and drawer units, work surfacing with inset sink / drainer, integrated dishwasher, integrated fridge / freezer, integrated double electric oven, gas hob with cooker hood over, two velux skylights, windows and patio doors to the rear garden. Radiator.

Utility Room

Comprising of wall and base units, work surfacing with inset sink / drainer, plumbing for washing machine, space for tumble dryer, door to the side, radiator.

First Floor Landing

Stairs from hallway, window to the rear, radiator.

Master Bedroom

Windows to both front and rear, radiator. Dressing area with built in wardrobes.

En Suite

Comprising: Double shower cubicle, wash hand basin, W.C, extractor fan, tiling. Radiator.

Bedroom Two

Windows to both front & rear, radiator.

Bedroom Five

Window to the front, radiator.

Bathroom

Suite comprising bath, wash hand basin, W.C, part tiled, radiator, velux skylight. Tiling. Radiator.

Second Floor Landing

Window to the front.

Bedroom Three

Window to the rear, radiator.

Bedroom Four

Window to the front, radiator.

Shower Room



Comprising: Double shower cubicle, wash hand basin, W.C, extractor fan, tiling. Radiator.

Double Garage 17' 4" x 16' 8" (5.28m x 5.08m)

Two up and over doors, power and light, personal door to the garden.

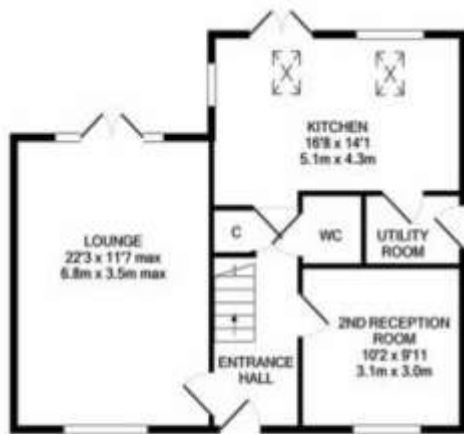
Driveway:

Providing ample off road parking.

Rear garden:

Having been landscaped for low maintenance. Majority laid to artificial lawn with composite decked area and pergola over.

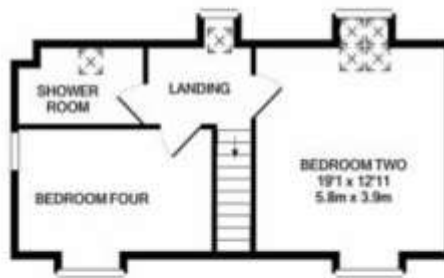
Floor Plan



GROUND FLOOR



1ST FLOOR



2ND FLOOR

Energy Efficiency and Environmental Impact



Please Note No tests have been undertaken of any of the services and any intending purchasers should satisfy themselves in this regard. Towers Wills Ltd for themselves and for the vendor of this property whose agents they are, give notice that, (i) these particulars do not constitute any part of an offer or contract, (ii) all statements contained within these particulars are made without responsibility on the part of Towers Wills or the vendor, (iii) whilst made in good faith, none of the statements contained within these particulars are to be relied upon as a statement of representation or fact, (iv) any intending purchaser must satisfy him/herself by inspection or otherwise as to the correctness of each of the statements contained within these particulars, (v) the vendor does not make or give either Towers Wills or any person in their employment any authority to make or give representation or warranty whatsoever in relation to this property.

Photographs / Floor Plans Photographs are reproduced for general information and it must not be inferred that any item is included for sale with this property. Please note floor plans are not to scale and are for identification purposes only. The photographs used in these particulars may have been taken with the use of a wide angle lens. If you have any queries as to the size of the accommodation or plot, please address these with the agent prior to making an appointment to view.