

Towers Wills

Town & Country

Offers in excess of
£130,000



14 Tristram Close, Yeovil, Somerset, BA21 3GU

Towers Wills are pleased to bring to market this well-presented ground floor apartment. The tenant in-situ is currently paying £650pcm and the flat at present has over 110 years remaining on the lease. The flat benefits from kitchen/diner, separate lounge, master en-suite and comes with allocated parking. Situated in a popular location this is an ideal investment.

Key Features

- TWO DOUBLE BEDROOMS
- En-suite to master bedroom
- Spacious apartment
- Parking
- Well presented throughout
- No onward chain

Entrance Hall

Including radiator, cupboard and intercom.

Kitchen Diner 3.55m x 4.80m - maximum measurements

Fitted with a range of wall, base and drawer units, work surfacing with stainless steel one and a half bowl sink drainer units, space for washing machine, space for dishwasher, fridge freezer, integrated gas hob and integrated electric oven with cooker hood over, two double glazed windows to the rear, radiator and central heating boiler.



Bathroom

Suite comprising bath with mixer tap shower over, w.c, wash hand basin, extractor fan and radiator.

Lounge 6.21m x 4.79m maximum measurements - irregular shape

Double glazed window to the rear and two radiators.



Bedroom One 4.33m x 3.85m - maximum measurements

Double glazed window to the front, radiator and double built-in wardrobe.

En-suite

Suite comprising shower cubicle, w.c, wash hand basin, radiator and extractor fan.

Bedroom Two 3.37m x 3.62m - maximum measurements

Double glazed windows to the rear and side and radiator.



Parking

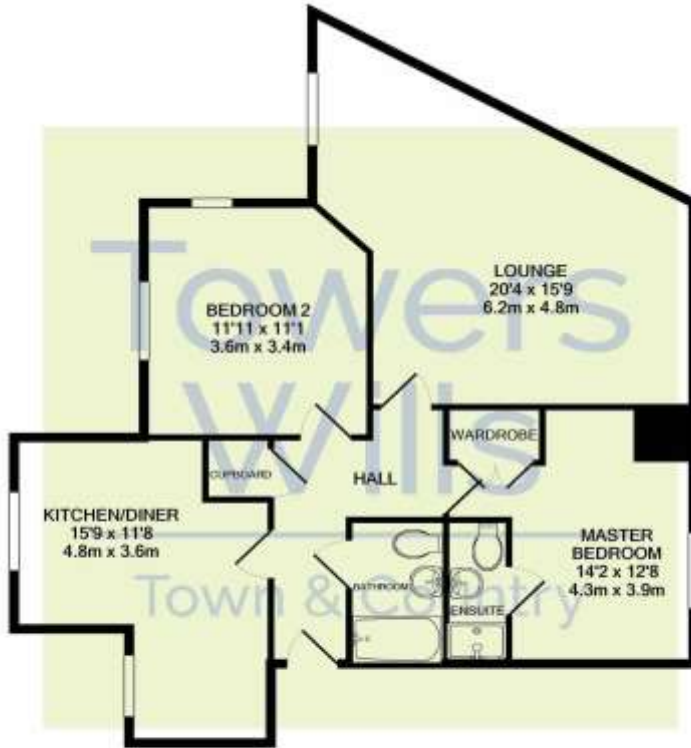
There is one allocated parking space.

Agents Note

The vendor has advised us that the monthly service charge is at £67.24 and that includes building insurance, ground rent and maintenance and there are 111 years remaining on the lease (as of November 2020). Current monthly rental: £650 pcm

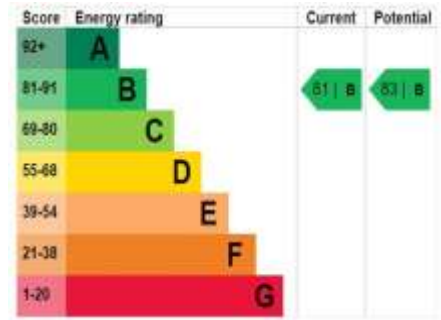


Floor Plan



Whilst every attempt has been made to ensure the accuracy of the floor plan contained here, measurements of doors, windows, rooms and any other items are approximate and no responsibility is taken for any error, omission, or mis-statement. This plan is for illustrative purposes only and should be used as such by any prospective purchaser. The services, systems and appliances shown have not been tested and no guarantee as to their operability or efficiency can be given.
Made with Metropix ©2020

Energy Efficiency and Environmental Impact



Please Note No tests have been undertaken of any of the services and any intending purchasers should satisfy themselves in this regard. Towers Wills Ltd for themselves and for the vendor of this property whose agents they are, give notice that, (i) these particulars do not constitute any part of an offer or contract, (ii) all statements contained within these particulars are made without responsibility on the part of Towers Wills or the vendor, (iii) whilst made in good faith, none of the statements contained within these particulars are to be relied upon as a statement of representation or fact, (iv) any intending purchaser must satisfy him/herself by inspection or otherwise as to the correctness of each of the statements contained within these particulars, (v) the vendor does not make or give either Towers Wills or any person in their employment any authority to make or give representation or warranty whatsoever in relation to this property.

Photographs / Floor Plans Photographs are reproduced for general information and it must not be inferred that any item is included for sale with this property. Please note floor plans are not to scale and are for identification purposes only. The photographs used in these particulars may have been taken with the use of a wide angle lens. If you have any queries as to the size of the accommodation or plot, please address these with the agent prior to making an appointment to view.

Towers Wills

The White House, 114 Hendford Hill, Yeovil BA20 2RF

Yeovil 01935 577032 / South Petherton 01460 298530

info@towerswills.co.uk www.towerswills.co.uk