

Towers Wills

Town & Country

Offers in excess of
£220,000



Beverley, Yeovil, Somerset, BA22 8TW

Towers Wills welcome to the market a rare opportunity to purchase a three bedroom detached bungalow occupying a substantial plot, surrounded by glorious countryside and in this popular village. Please note the property is available to CASH BUYERS ONLY as is non standard construction. The accommodation briefly comprises: reception hallway, lounge, dining room, kitchen, three bedrooms, bathroom, large front and rear gardens, driveway and garage. NO ONWARD CHAIN.

Key Features

- VIDEO TOUR AVAILABLE
- Cash buyers only
- Tremendous potential
- Beautiful countryside views
- Large plot
- Three bedrooms

Reception Hallway

With door to the front.

Living Room 4.30m x 3.40m

With windows to both front and side, fireplace and night storage heater.

Dining Room 4.30m x 2.50m

Window to the rear, storage cupboard and night storage heater.

Kitchen 3.40m x 1.83m

Comprising of wall, base and drawer units, work surfacing with inset stainless steel sink/drain, plumbing for washing machine, tiling to splash prone areas, space for fridge/freezer, electric cooker point, window to the rear, door to the side and pantry.

Inner Hallway

With doors to bedrooms and bathroom.

Bedroom One 3.34m x 3.29m

Window to the front and night storage heater.

Bedroom Two 3.32m x 2.75m

Window to the front and night storage heater.

Bedroom Three 2.76m x 3.34m

Window to the rear and night storage heater.

Bathroom 1.84m x 1.50m

Comprising bath, wash hand basin with vanity unit under, part tiled and window to the rear.

Separate W.C

Wc and window to the rear.

Outside

The property's true selling feature has to be the location, with large gardens to both the front and rear. The property is surrounded by beautiful countryside and enjoys a great deal of privacy and offering tremendous potential.

Driveway

A large driveway provides ample off road parking for several vehicles.

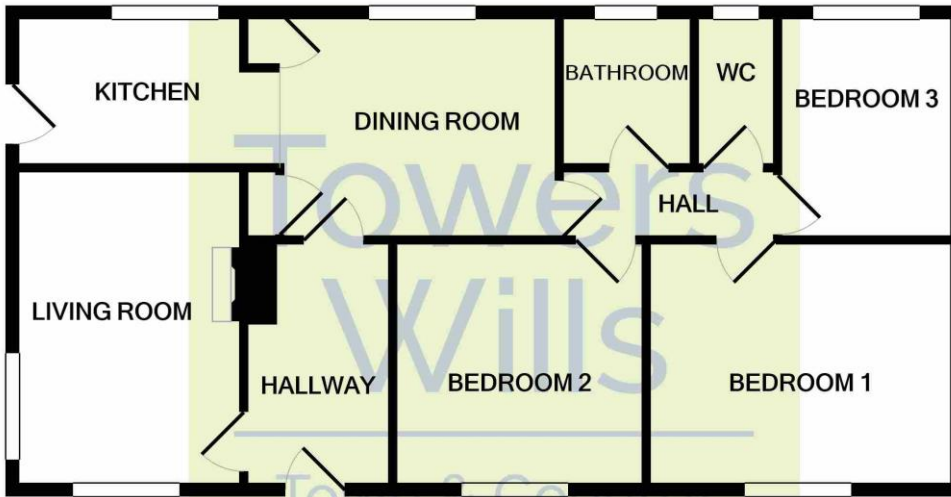
Garage

A detached garage with up and over door. In need of attention.



Floor Plan

Energy Efficiency
and Environmental
Impact
Pending



Whilst every attempt has been made to ensure the accuracy of the floor plan contained here, measurements of doors, windows, rooms and any other items are approximate and no responsibility is taken for any error, omission, or mis-statement. This plan is for illustrative purposes only and should be used as such by any prospective purchaser. The services, systems and appliances shown have not been tested and no guarantee as to their operability or efficiency can be given
Made with Metropix ©2020

Please Note No tests have been undertaken of any of the services and any intending purchasers should satisfy themselves in this regard. Towers Wills Ltd for themselves and for the vendor of this property whose agents they are, give notice that, (i) these particulars do not constitute any part of an offer or contract, (ii) all statements contained within these particulars are made without responsibility on the part of Towers Wills or the vendor, (iii) whilst made in good faith, none of the statements contained within these particulars are to be relied upon as a statement of representation or fact, (iv) any intending purchaser must satisfy him/herself by inspection or otherwise as to the correctness of each of the statements contained within these particulars, (v) the vendor does not make or give either Towers Wills or any person in their employment any authority to make or give representation or warranty whatsoever in relation to this property.

Photographs / Floor Plans Photographs are reproduced for general information and it must not be inferred that any item is included for sale with this property. Please note floor plans are not to scale and are for identification purposes only. The photographs used in these particulars may have been taken with the use of a wide angle lens. If you have any queries as to the size of the accommodation or plot, please address these with the agent prior to making an appointment to view.

Towers Wills

The White House, 114 Hendford Hill, Yeovil BA20 2RF

Yeovil 01935 577032 / South Petherton 01460 298530

info@towerswills.co.uk www.towerswills.co.uk