

Towers Wills

Town & Country

£200,000



8 Hendford Grove, Yeovil, Somerset, BA20 1UT

Towers Wills welcome to the market this immaculately presented three bedrooms semi-detached home. Viewing is a must to fully appreciate what this home offers. Comprising: Hallway, living room, dining room, kitchen, three bedrooms, bathroom, front and rear gardens. Walking distance of Leonardo Helicopters, Yeovil Hospital and Town Centre.

Key Features

- Stunning presentation throughout
- Three bedrooms
- Two reception rooms
- Walking distance of Leonardo Helicopters, Yeovil Hospital & Town Centre
- Good sized rear garden
- Character home

Hallway:

Door to the front, radiator.

Living room:

A light and spacious bay fronted room with window to the front, radiator.

Dining room:

Window to the rear, under stairs recess, radiator.

Kitchen:

A modern well presented fitted kitchen comprising of wall, base and drawer units, work surfacing with sink / drainer inset. Integrated electric oven, gas hob with cooker hood over. Tiling to splash prone areas. plumbing for washing machine, integrated dishwasher, integrated fridge / freezer, tiling to splash prone areas, LED plinth lighting, windows to both side and rear, door to the rear garden. Radiator.

Landing:

Stairs from hallway, loft access.

Bedroom one:

Two windows to the front, radiator.

Bedroom two:

Window to the rear, radiator.

Bedroom three:

Window to the rear, radiator.

Bathroom:

A modern white suite comprising bath with shower over, wash hand basin with vanity unit, W.C, part tiled, window to the side, heated towel rail.

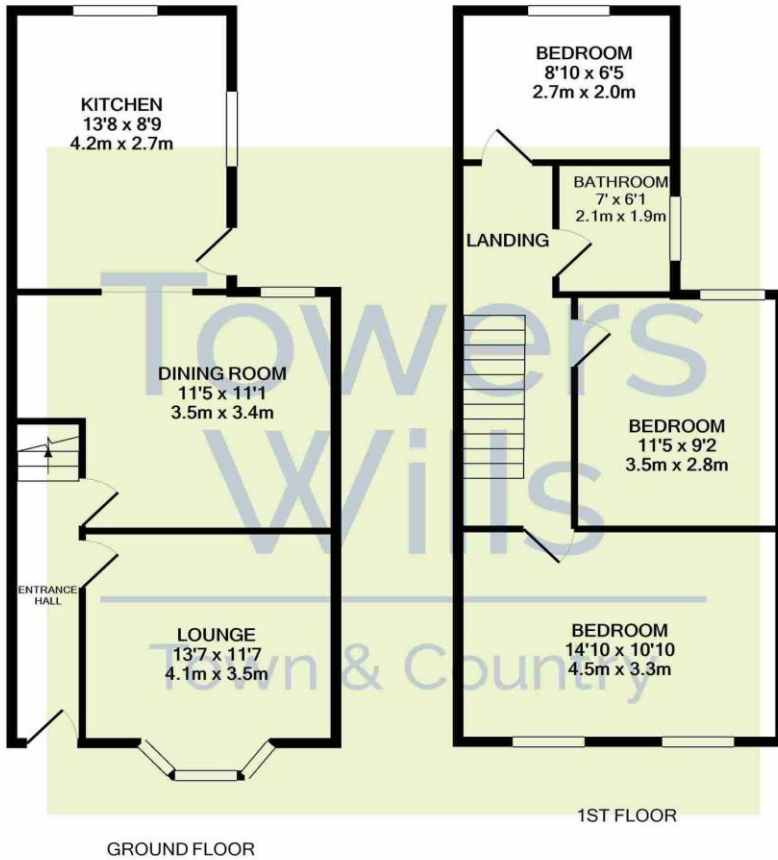
Outside:

To the rear a generous garden is majority laid to lawn, garden shed, outside tap, gated side access.



Floor Plan

Energy Efficiency and Environmental Impact



Whilst every attempt has been made to ensure the accuracy of the floor plan contained here, measurements of doors, windows, rooms and any other items are approximate and no responsibility is taken for any error, omission, or mis-statement. This plan is for illustrative purposes only and should be used as such by any prospective purchaser. The services, systems and appliances shown have not been tested and no guarantee as to their operability or efficiency can be given
Made with Metropix ©2021

Please Note No tests have been undertaken of any of the services and any intending purchasers should satisfy themselves in this regard. Towers Wills Ltd for themselves and for the vendor of this property whose agents they are, give notice that, (i) these particulars do not constitute any part of an offer or contract, (ii) all statements contained within these particulars are made without responsibility on the part of Towers Wills or the vendor, (iii) whilst made in good faith, none of the statements contained within these particulars are to be relied upon as a statement of representation or fact, (iv) any intending purchaser must satisfy him/herself by inspection or otherwise as to the correctness of each of the statements contained within these particulars, (v) the vendor does not make or give either Towers Wills or any person in their employment any authority to make or give representation or warranty whatsoever in relation to this property.

Photographs / Floor Plans Photographs are reproduced for general information and it must not be inferred that any item is included for sale with this property. Please note floor plans are not to scale and are for identification purposes only. The photographs used in these particulars may have been taken with the use of a wide angle lens. If you have any queries as to the size of the accommodation or plot, please address these with the agent prior to making an appointment to view.

Towers Wills

The White House, 114 Hendford Hill, Yeovil BA20 2RF

Yeovil 01935 577032 / South Petherton 01460 298530

info@towerswills.co.uk www.towerswills.co.uk