

Towers Wills

Town & Country

Offers in excess of
£240,000



18 Broadacres, West Coker, Somerset, BA22 9LW

Towers Wills welcome to the market this spacious three bedroom family home situated in a quiet tucked away position within this sought after village. Comprising: Hallway, cloak W.C, lounge / diner, kitchen, three bedrooms, shower room, driveway, garage and garden. Property available for viewing immediately but sale completion earliest date of 16th October 2021.

Key Features

- Quiet cul de sac location
- Sought after village
- Three bedrooms
- Driveway
- Garage
- Re-fitted shower room

Entrance Hall

Double glazed door to the front, double glazed window to the side, radiator and under stairs cupboard.

W.C

Comprising w.c, wash hand basin, radiator and double glazed window to the side.

Kitchen 2.84m x 2.70m

Comprising of a range of wall, base and drawer units, work surfacing with stainless steel one bowl sink/drainer, double glazed window to the rear, double glazed door to the side, space for washing machine, space for electric cooker with cookerhood over and cupboard.



Lounge Diner 3.56m x 7.42m

Double glazed window to the front, two radiators, electric fire and double glazed patio doors to the rear.



First Floor Landing

Double glazed window to the side, loft hatch and airing cupboard housing the water tank.

Bedroom One 3.14m x 3.91m

Double glazed window to the front and radiator.

Bedroom Two 3.18m x 3.15m

Double glazed window to the rear and radiator.

Bedroom Three 2.91m x 2.42m

Double glazed window to the front, radiator and built-in wardrobe.

Shower room

Suite comprising shower cubicle, wash hand basin, w.c, heated towel rail and double glazed window to the rear.



Outside

Front Garden

To the front of the property is an area of lawn with planted beds.

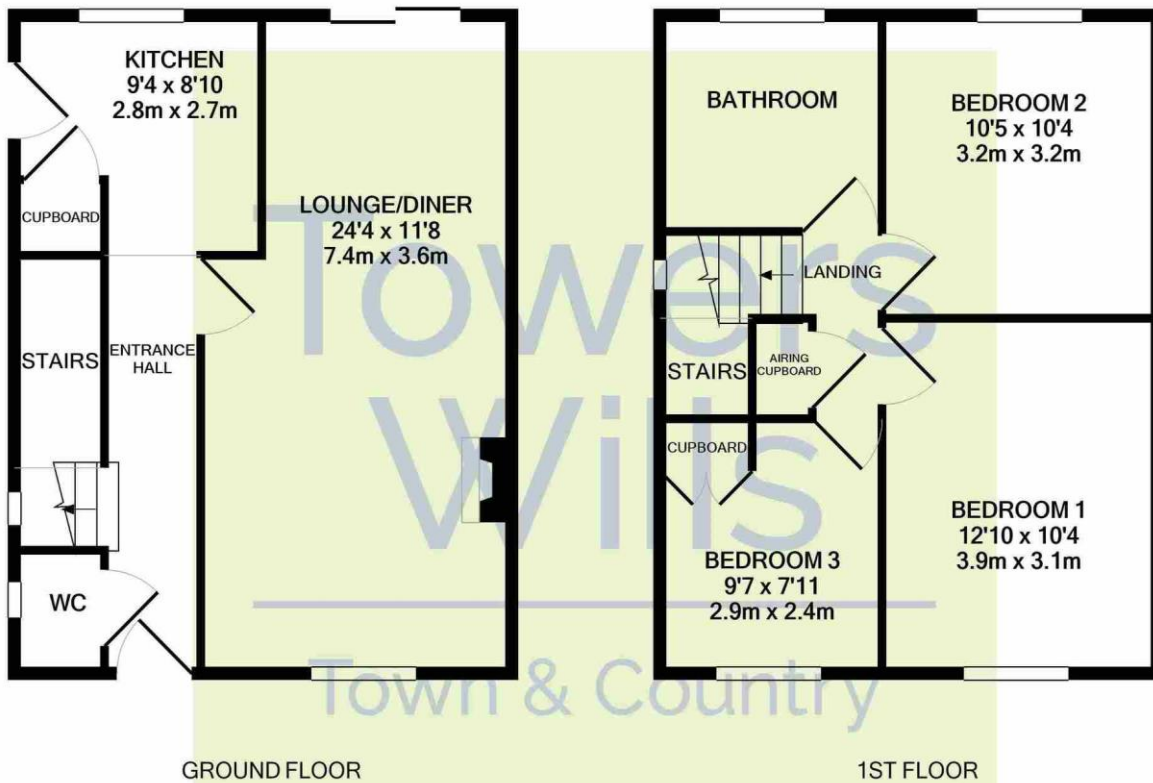
Driveway

A driveway provides off road parking for 2/3 cars which in turn leads to the garage.

Garage

With an 'up and over' door, power, light, central heating boiler and single glazed window to the rear. Rear Garden To the rear the garden has an area laid to lawn with gravel borders, patio area, wooden shed and an oil tank.





Whilst every attempt has been made to ensure the accuracy of the floor plan contained here, measurements of doors, windows, rooms and any other items are approximate and no responsibility is taken for any error, omission, or mis-statement. This plan is for illustrative purposes only and should be used as such by any prospective purchaser. The services, systems and appliances shown have not been tested and no guarantee as to their operability or efficiency can be given
 Made with Metropix ©2021

Please Note No tests have been undertaken of any of the services and any intending purchasers should satisfy themselves in this regard. Towers Wills Ltd for themselves and for the vendor of this property whose agents they are, give notice that, (i) these particulars do not constitute any part of an offer or contract, (ii) all statements contained within these particulars are made without responsibility on the part of Towers Wills or the vendor, (iii) whilst made in good faith, none of the statements contained within these particulars are to be relied upon as a statement of representation or fact, (iv) any intending purchaser must satisfy him/herself by inspection or otherwise as to the correctness of each of the statements contained within these particulars, (v) the vendor does not make or give either Towers Wills or any person in their employment any authority to make or give representation or warranty whatsoever in relation to this property.

Photographs / Floor Plans Photographs are reproduced for general information and it must not be inferred that any item is included for sale with this property. Please note floor plans are not to scale and are for identification purposes only. The photographs used in these particulars may have been taken with the use of a wide angle lens. If you have any queries as to the size of the accommodation or plot, please address these with the agent prior to making an appointment to view.