

Towers Wills

Town & Country

Offers in excess of
£170,000



23 Seaton Road, Yeovil, Somerset, BA20 2AN

Towers Wills welcome to the market this beautifully presented three bedroom home situated in a popular residential location within walking distance of Leonardo Helicopters, Yeovil Hospital, Town centre, supermarkets & amenities. Ideal first time buy / buy to let. Briefly comprising: Hallway, living room, dining room, kitchen, three bedrooms, bathroom, enclosed rear garden.

Key Features

- Three bedrooms
- Walking distance of Leonardo Helicopters, Yeovil District Hospital, Town Centre & amenities
- Well presented throughout
- Popular residential location
- Ideal first time buy / Buy to let
- Early inspection advised

Entrance Porch

Double glazed door to the front. Entrance Hall Single glazed door to the front.

Lounge 3.25m x 3.54m - maximum measurements

Radiator, two double glazed windows to the front and log burner.

Dining Area 3.39m x 3.70m - maximum measurements

Radiator, double glazed window to the rear and under stairs storage cupboard.

Kitchen 2.73m x 4.29m - maximum measurements

Comprising of a range of wall, base and drawer units, work surfacing with one bowl sink/drainers, double glazed door to the side, double glazed window to the side, integrated electric oven, integrated gas hob with cookerhood over, space for washing machine, space for fridge freezer and central heating boiler. Bathroom Suite comprising shower cubicle, wash hand basin, w.c, heated towel rail and extractor fan.

Lean To 1.99m x 1.10m

Double glazed patio doors to the rear and space for dryer/freezer.

First Floor Landing

Loft hatch.

Bedroom One 4.56m x 3.25m - maximum measurements

Two double glazed windows to the front, feature fireplace and radiator.

Bedroom Two 3.38m x 2.77m

Double glazed window to the rear and radiator.

Bedroom Three 2.34m x 2.65m - maximum measurements

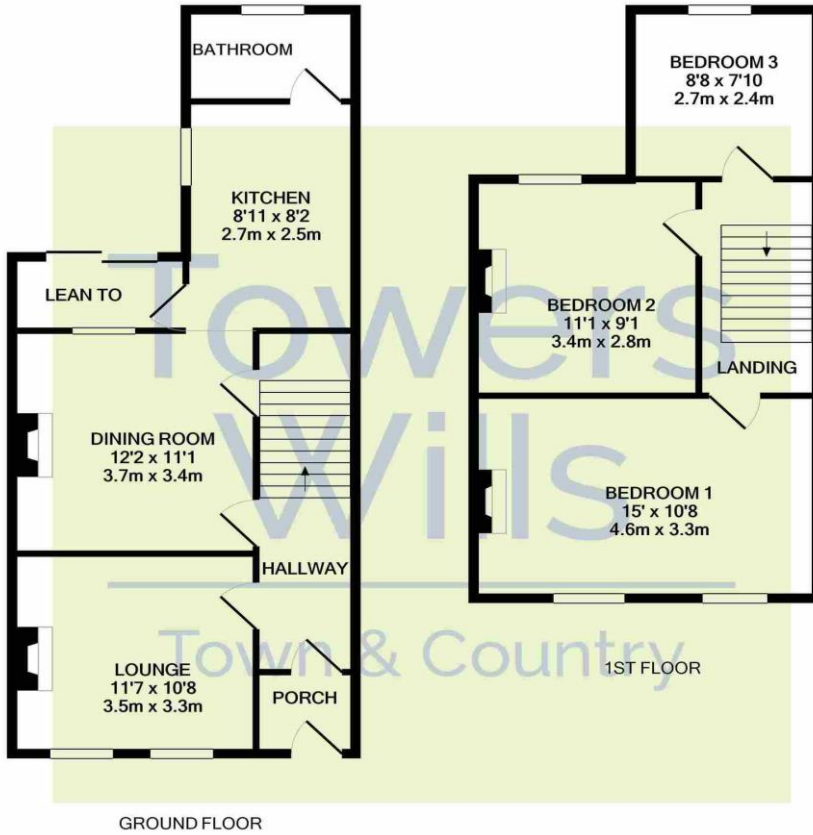
Double glazed window to the rear and radiator.

Outside

Rear Garden

To the rear the garden is largely laid to lawn with patio area, outside tap, two wooden sheds and rear access.





Whilst every attempt has been made to ensure the accuracy of the floor plan contained here, measurements of doors, windows, rooms and any other items are approximate and no responsibility is taken for any error, omission, or mis-statement. This plan is for illustrative purposes only and should be used as such by any prospective purchaser. The services, systems and appliances shown have not been tested and no guarantee as to their operability or efficiency can be given
 Made with Metropix ©2021

Please Note No tests have been undertaken of any of the services and any intending purchasers should satisfy themselves in this regard. Towers Wills Ltd for themselves and for the vendor of this property whose agents they are, give notice that, (i) these particulars do not constitute any part of an offer or contract, (ii) all statements contained within these particulars are made without responsibility on the part of Towers Wills or the vendor, (iii) whilst made in good faith, none of the statements contained within these particulars are to be relied upon as a statement of representation or fact, (iv) any intending purchaser must satisfy him/herself by inspection or otherwise as to the correctness of each of the statements contained within these particulars, (v) the vendor does not make or give either Towers Wills or any person in their employment any authority to make or give representation or warranty whatsoever in relation to this property.

Photographs / Floor Plans Photographs are reproduced for general information and it must not be inferred that any item is included for sale with this property. Please note floor plans are not to scale and are for identification purposes only. The photographs used in these particulars may have been taken with the use of a wide angle lens. If you have any queries as to the size of the accommodation or plot, please address these with the agent prior to making an appointment to view.