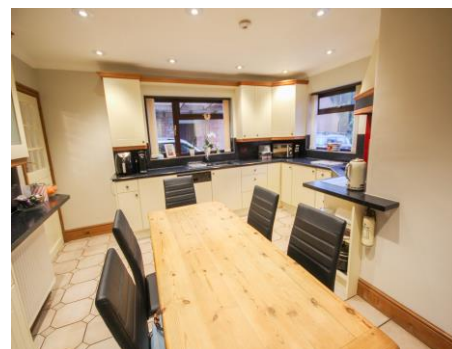


Towers Wills

Town & Country

£575,000



93 Ilchester Road, Yeovil, Somerset, BA21 3BJ

Towers Wills welcome to market this well-presented family home, tucked back away from the main Ilchester Road in a cul-de-sac, close to Yeovil town centre and local college. The property is positioned on a good-sized plot and benefits from private gated drive, ample parking, garage, wrap around garden while inside; kitchen, utility, downstairs cloakroom, two separate reception rooms additional dining area, downstairs fifth bedroom with ensuite. Upstairs the remaining four bedrooms, master ensuite, bathroom and separate WC.

Key Features

- Spacious Detached family home
- Five bedrooms
- Three reception rooms
- Walking distance to Town Centre & Hospital
- Large garage
- Ample off-road parking

Entrance Porch

With double glazed door to the front and leading to the entrance hall.

Entrance Hall

With radiator and under stairs cupboard.

Sitting Room 5.73m x 5.69m - maximum measurements

Four radiators, double glazed patio doors to the side, double glazed window to the front and gas fireplace.

Dining Room 4.65m x 3.64m (plus window recess) - maximum measurements

Double glazed window to the front, double glazed window to the rear, two radiators and double doors leading to the second sitting room.

Lounge 7.53m x 6.20m - maximum measurements

Two radiators, two double glazed windows to the side, double glazed patio doors to the front and additional double glazed patio doors to the rear.

Downstairs Bedroom Five 4.24m x 2.66m - maximum measurements

Double glazed windows to the side and rear and radiator.

En-suite

Suite comprising shower cubicle, wash hand basin, w.c, double glazed window to the side, radiator, gas central heating boiler and extractor fan.

Downstairs W.C

Includes double glazed window to the rear, wash hand basin and w.c.

Kitchen 4.60m x 4.55m - maximum measurements

Comprising of a range of wall, base and drawer units, work surfacing with one and a half bowl carbon composite sink drainer, double glazed windows to the front, side and rear, radiator, integrated induction hob with cookerhood over, integrated electric double oven, integrated dishwasher, two integrated fridges and door leading to utility.

Utility 2.90m x 3.21m - maximum measurements

Space for washing machine, space for American style fridge freezer, two double glazed windows to the rear, two double glazed windows to the side and two double



glazed doors leading to alternate sides, one of which is a stable door.

First Floor Landing

Double glazed window to the rear, loft hatch (includes a second central heating boiler which covers the main part of the house) and two cupboards.

Bedroom One 3.48m x 3.72m - maximum measurements

Double glazed windows to the front and side, radiator and built-in wardrobe.

En-suite

Suite comprising shower cubicle, wash hand basin, w.c, radiator, electric heated towel rail, under eaves storage and double glazed window to the rear.

Agents Note

This en-suite is currently being renovated by current owner.

Bedroom Two 4.57m x 4.28m - maximum measurements

Double glazed windows to the front and side, radiator and built-in double wardrobes.

Bedroom Three 2.98m x 3.67m - maximum measurements

Double glazed windows to the front and side and radiator.

Bedroom Four 2.43m x 3.66m - maximum measurements

Double glazed window to the front and radiator.

Separate W.C

Double glazed window to the front and w.c.

Bathroom

Suite comprising bath with shower over, wash hand basin, double glazed window to the rear and heated towel rail.

Driveway

Ample parking and electric gated driveway leading to garage and carport.

Front Garden

To the front of the property the garden is largely laid to lawn, power sockets, patio seating area and gravel parking area. Planted beds with mature trees and shrubs.

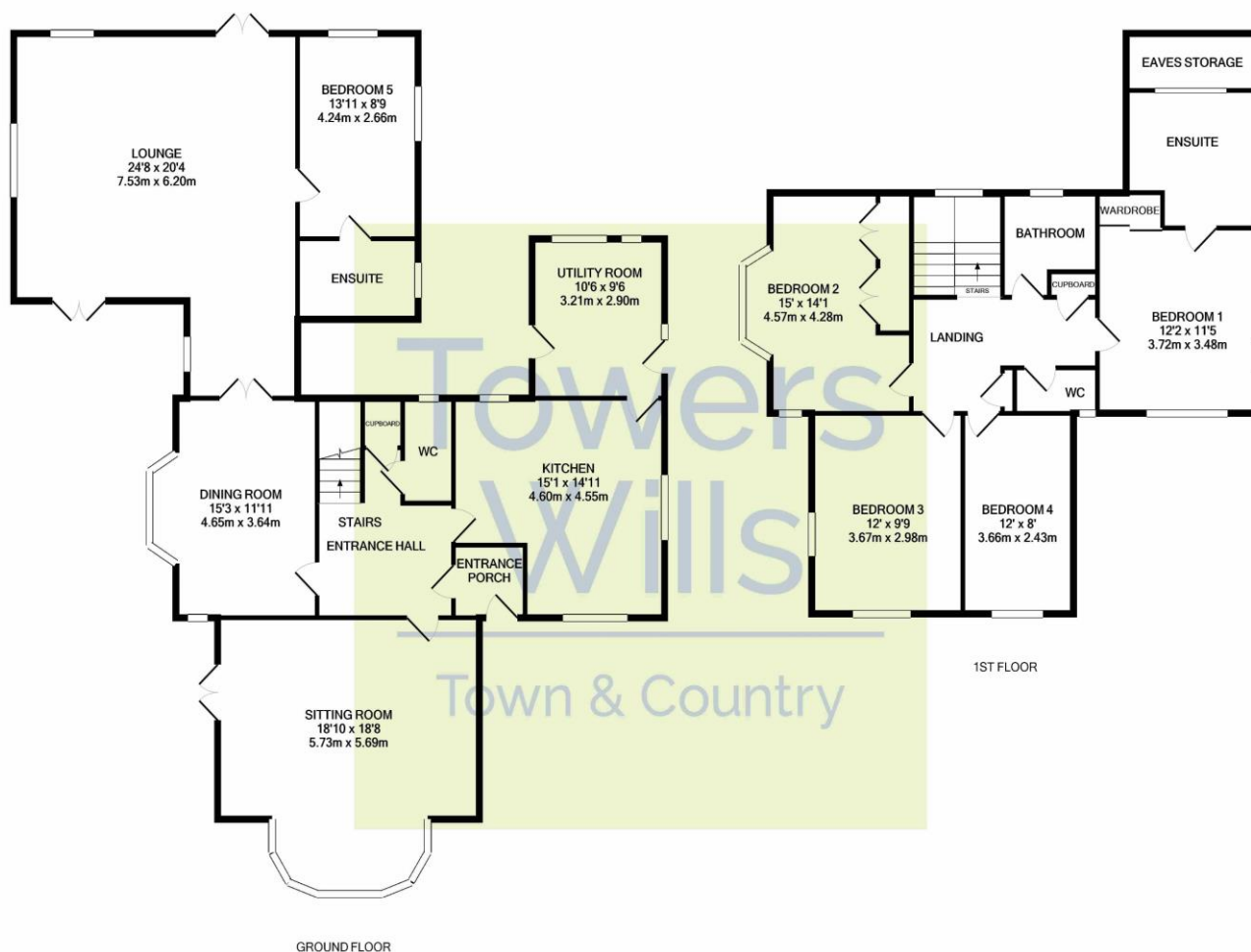
Rear Garden

The rear of the property is again largely laid to lawn with a greenhouse and patio seating area. Again with planted borders that include mature trees & shrubs.

Garage 11.77m x 3.28m - maximum measurements

Has an electric roller door, double glazed window to the rear, two single glazed windows to the sides, power and light.

Floor Plan



Whilst every attempt has been made to ensure the accuracy of the floor plan contained here, measurements of doors, windows, rooms and any other items are approximate and no responsibility is taken for any error, omission, or mis-statement. This plan is for illustrative purposes only and should be used as such by any prospective purchaser. The services, systems and appliances shown have not been tested and no guarantee as to their operability or efficiency can be given.
Made with Metropix 62022

Energy Performance Certificate

Score	Energy rating	Current	Potential
92+	A		
81-91	B		
69-80	C		76 C
55-68	D	63 D	
39-54	E		
21-38	F		
1-20	G		

Please Note No tests have been undertaken of any of the services and any intending purchasers should satisfy themselves in this regard. Towers Wills Ltd for themselves and for the vendor of this property whose agents they are, give notice that, (i) these particulars do not constitute any part of an offer or contract, (ii) all statements contained within these particulars are made without responsibility on the part of Towers Wills or the vendor, (iii) whilst made in good faith, none of the statements contained within these particulars are to be relied upon as a statement of representation or fact, (iv) any intending purchaser must satisfy him/herself by inspection or otherwise as to the correctness of each of the statements contained within these particulars, (v) the vendor does not make or give either Towers Wills or any person in their employment any authority to make or give representation or warranty whatsoever in relation to this property.

Photographs / Floor Plans Photographs are reproduced for general information and it must not be inferred that any item is included for sale with this property. Please note floor plans are not to scale and are for identification purposes only. The photographs used in these particulars may have been taken with the use of a wide angle lens. If you have any queries as to the size of the accommodation or plot, please address these with the agent prior to making an appointment to view.

Towers Wills

The White House, 114 Hendford Hill, Yeovil BA20 2RF

Yeovil 01935 577032 / South Petherton 01460 298530

info@towerswills.co.uk www.towerswills.co.uk