

Towers Wills

Town & Country

📞 01935 577 032 | 01460 298 530 | ✉ info@towerswills.co.uk



128, Ilchester Road, Yeovil, Somerset BA21 3BN

OIEO £300,000

Towers Wills welcome to the market a fine detached bungalow situated in a popular residential location comprising: Hallway, living room, dining room, 2/3 bedrooms (study/ bedroom 3), kitchen, bathroom, front and rear gardens, driveway and garage.

Hallway:

A good sized hallway with door and windows to the front. Radiator.

Living room: 4.60m x 3.20m

A bay fronted room with large window to the front, radiator and feature fireplace with dual fuel multi burner.

Dining room: 3.39m x 3.34m

Perfect for entertaining being positioned next to the kitchen, fireplace recess, radiator and and feature fireplace with dual fuel multi burner.

Kitchen: 3.27m x 3.19m

A well presented kitchen fitted with a range of wall, base and drawer units, work surfacing with one and a half bowl sink/ drainer, double electric Neff oven and induction hob with cooker hood over, integral fridge, integral freezer, integral dishwasher, window to the rear. Door to the rear lobby.

Rear lobby/ utility:

With door to the rear, plumbing for washing machine.

Study/ Bedroom Three: 3.26m x 3.01m

A versatile room with window to the rear, radiator.

Bedroom one: 3.38m x 3.22m

With window to the side, radiator. Fitted bedroom furniture.

Bedroom Two 3.34m x 2.81m

Window to the front.

Bathroom: 2.36m x 1.72m

Suite comprising bath with shower over, wash hand basin with vanity unit under, W.C, extractor fan, heated towel rail.

Outside:

To the front is an area of lawn and large driveway providing off road parking and turning area.

Garage:

Detached garage with up and over door, power and light.

Rear garden:

A true selling feature to the property must be this large garden majority laid to lawn with patio area, planted shrub borders, summerhouse and greenhouse.

Key Features

- 2/3 Bedrooms
- Detached
- Large rear garden
- Driveway
- Garage
- Early viewing advised
- Well presented throughout

Contact Us

Towers Wills Estate Agents - Yeovil

114, Hendford Hill

Yeovil

Somerset

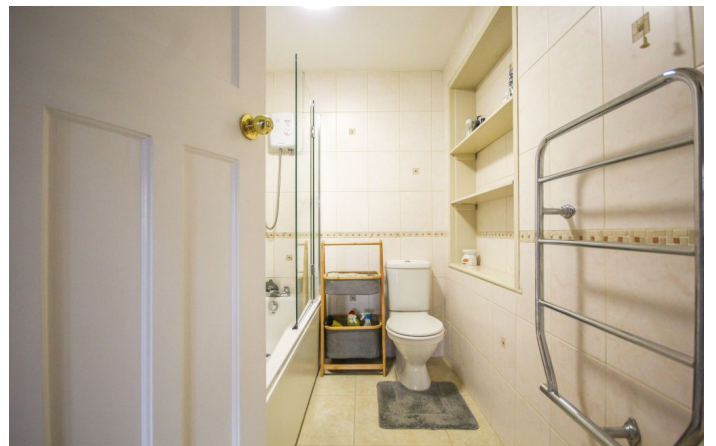
BA202RF

T: 01935 577032

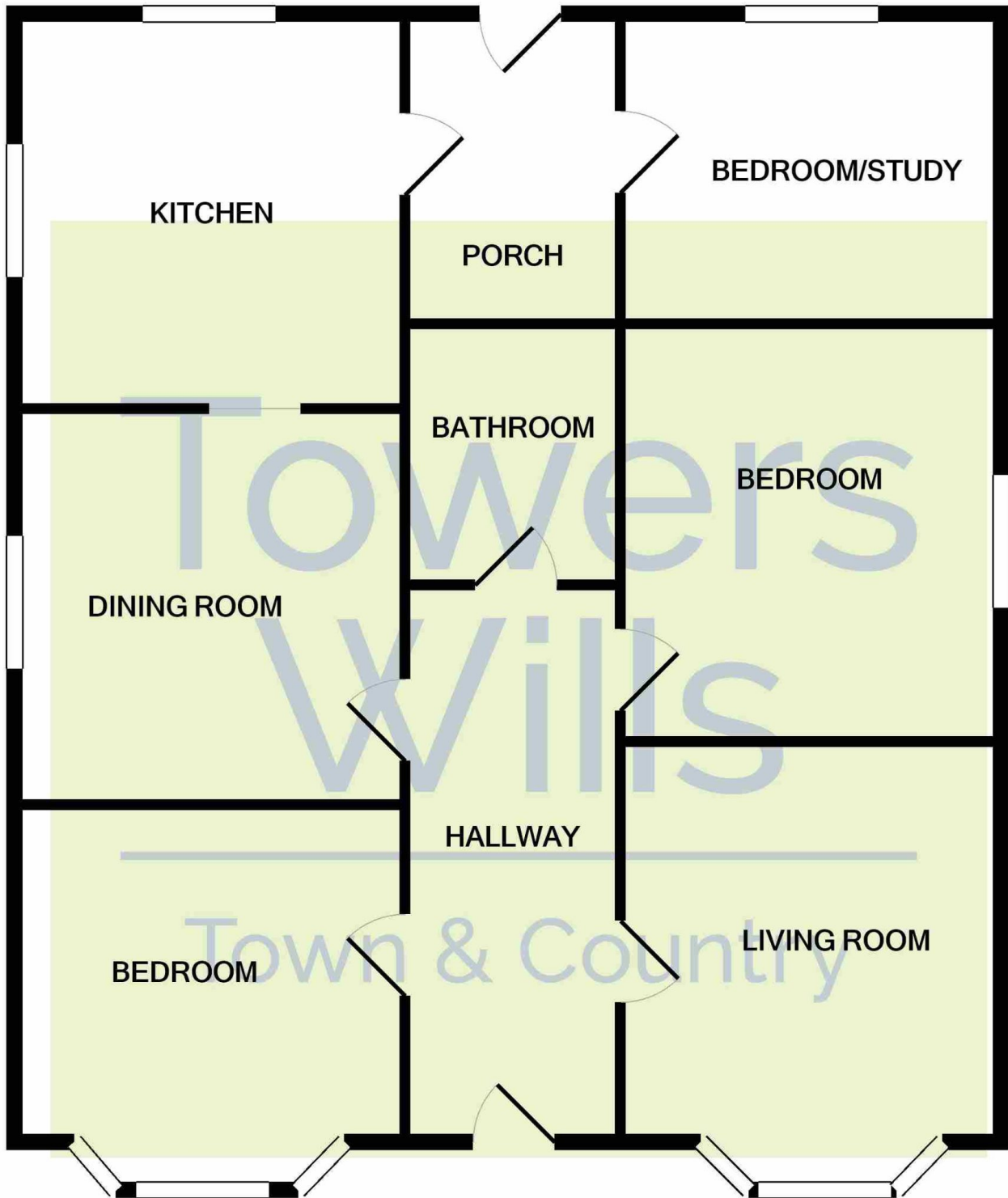
E: info@towerswills.co.uk

Energy Efficiency

Score	Energy rating	Current	Potential
92+	A		
81-91	B		
69-80	C		69 c
55-68	D	56 d	
39-54	E		
21-38	F		
1-20	G		



Floor Plan



Whilst every attempt has been made to ensure the accuracy of the floor plan contained here, measurements of doors, windows, rooms and any other items are approximate and no responsibility is taken for any error, omission, or mis-statement. This plan is for illustrative purposes only and should be used as such by any prospective purchaser. The services, systems and appliances shown have not been tested and no guarantee as to their operability or efficiency can be given
Made with Metropix ©2022

Please Note No tests have been undertaken of any of the services and any intending purchasers should satisfy themselves in this regard. Towers Wills Ltd for themselves and for the vendor of this property whose agents they are, give notice that, (i) these particulars do not constitute any part of an offer or contract, (ii) all statements contained within these particulars are made without responsibility on the part of Towers Wills or the vendor, (iii) whilst made in good faith, none of the statements contained within these particulars are to be relied upon as a statement of representation or fact, (iv) any intending purchaser must satisfy him/herself by

inspection or otherwise as to the correctness of each of the statements contained within these particulars, (v) the vendor does not make or give either Towers Wills or any person in their employment any authority to make or give representation or warranty whatsoever in relation to this property.

Photographs / Floor Plans Photographs are reproduced for general information and it must not be inferred that any item is included for sale with this property. Please note floor plans are not to scale and are for identification purposes only. The photographs used in these particulars may have been taken with the use of a wide angle lens. If you have any queries as to the size of the accommodation or plot, please address these with the agent prior to making an appointment to view

Towers Wills

The White House, 114 Hendford Hill, Yeovil BA20 2RF

Yeovil 01935 577032 / South Petherton 01460 298530

info@towerswills.co.uk | www.towerswills.co.uk