

Towers Wills

Town & Country

📞 01935 577 032 | 01460 298 530 | ✉ info@towerswills.co.uk



2, The Yard, Coppitts Hill, Yeovil, Somerset BA21
3PW

OIEO **£290,000**

Towers Wills welcome to the market this charming character cottage situated on the fringe of Yeovil briefly comprising: reception hallway, living room with wood burner, kitchen diner, three bedrooms, bathroom, front and rear gardens, garage and parking.

Reception Hallway

Door to the front, timber flooring and under stairs storage cupboard.

Living Room

With window to the front, wood burning stove with exposed brick chimney breast, radiator and timber flooring.

Kitchen Diner

With three windows to the rear and double glazed patio doors opening out onto the rear garden. The kitchen comprises of a range of wall, base and glazed display cabinets, work surfacing with inset stainless steel sink/drainers, plumbing for washing machine, space for cooker, radiator and tiled floor.

First Floor Landing

Stairs from reception hallway, loft access and airing cupboard.

Bedroom One

With window to the front and radiator.

Bedroom Two

With window to the rear and radiator.

Bedroom Three

With window to the front and radiator.

Bathroom

Suite comprising of bath with shower over, wash hand basin with vanity unit under, w.c, window to the rear and heated towel rail.

Outside

To the front of the property is an area of garden. To the rear of the property is a good size garden being majority laid to lawn with decked area and planted borders.

Garage

Situated opposite the property with barn style doors.

Agents Note

There is a right of way for neighbouring properties across the rear garden.

Mains Services

Mains drainage, mains electricity, mains water and oil-fired central heating (oil tank situated in rear garden).

Key Features

- Character Cottage
- Three Bedrooms
- Good Size Rear Garden
- Garage
- Parking

Contact Us

Towers Wills Estate Agents - Yeovil

114, Hendford Hill

Yeovil

Somerset

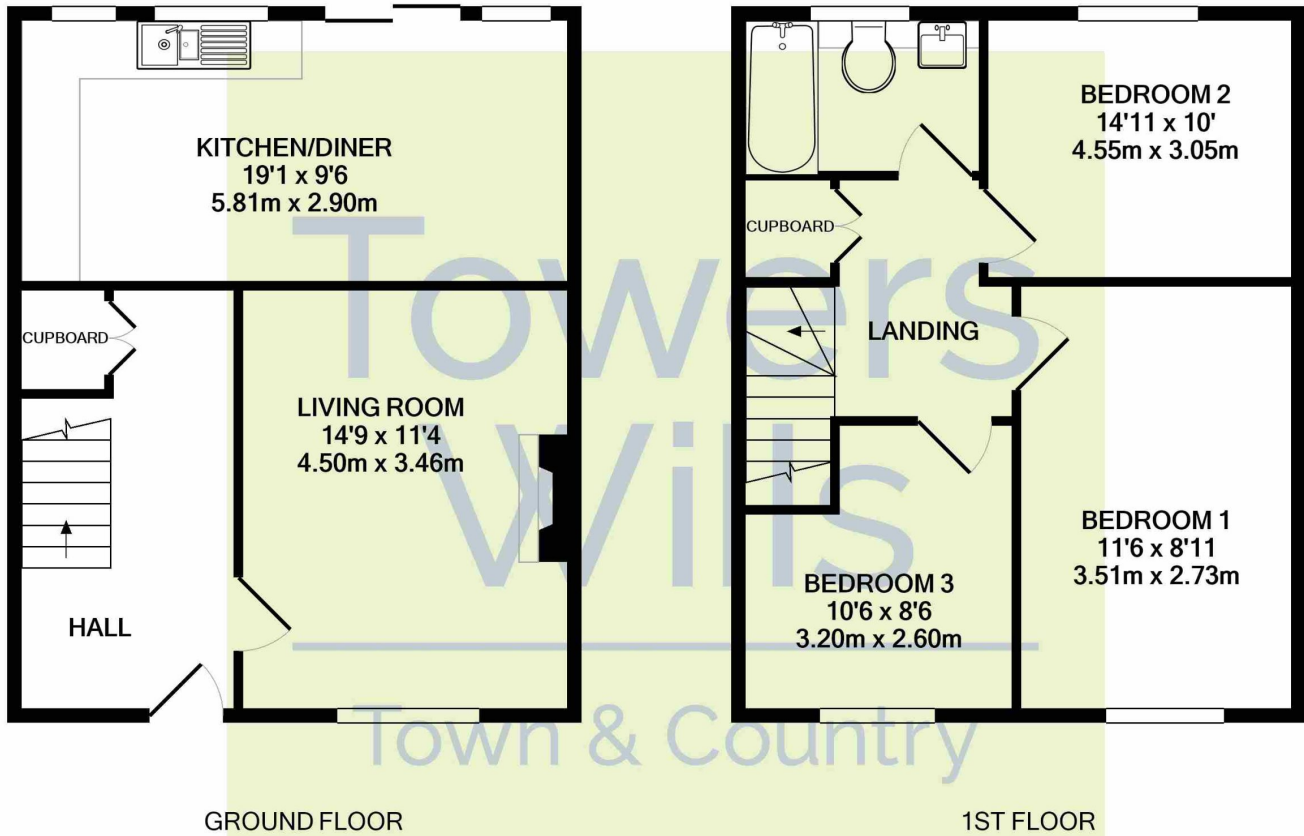
BA202RF

T: 01935 577032

E: info@towerswills.co.uk



Floor Plan



Whilst every attempt has been made to ensure the accuracy of the floor plan contained here, measurements of doors, windows, rooms and any other items are approximate and no responsibility is taken for any error, omission, or mis-statement. This plan is for illustrative purposes only and should be used as such by any prospective purchaser. The services, systems and appliances shown have not been tested and no guarantee as to their operability or efficiency can be given
Made with Metropix ©2022

Please Note No tests have been undertaken of any of the services and any intending purchasers should satisfy themselves in this regard. Towers Wills Ltd for themselves and for the vendor of this property whose agents they are, give notice that, (i) these particulars do not constitute any part of an offer or contract, (ii) all statements contained within these particulars are made without responsibility on the part of Towers Wills or the vendor, (iii) whilst made in good faith, none of the statements contained within these particulars are to be relied upon as a statement of representation or fact, (iv) any intending purchaser must satisfy him/herself by inspection or otherwise as to the correctness of each of the statements contained within these particulars, (v) the vendor does not make or give either Towers Wills or any person in their employment any authority to make or give representation or warranty whatsoever in relation to this property.

Photographs / Floor Plans Photographs are reproduced for general information and it must not be inferred that any item is included for sale with this property. Please note floor plans are not to scale and are for identification purposes only. The photographs used in these particulars may have been taken with the use of a wide angle lens. If you have any queries as to the size of the accommodation or plot, please address these with the agent prior to making an appointment to view

Towers Wills

The White House, 114 Hendford Hill, Yeovil BA20 2RF

Yeovil 01935 577032 / South Petherton 01460 298530

info@towerswills.co.uk | www.towerswills.co.uk