

Towers Wills

Town & Country

📞 01935 577 032 | 01460 298 530 | ✉ info@towerswills.co.uk



Flat 4, Braggchurch, 93 Hendford Hill, Yeovil,
Somerset BA20 2RE

OIEO £160,000

Towers Wills are delighted to bring to market this well presented ground floor apartment. This unique flat is set out across the entire ground floor and offers ample space with a stunning outlook over the communal gardens and surrounding woodland. The property briefly comprises of; two bedrooms, bathroom, kitchen, three good storage spaces, sitting room and shared parking area. No Onward Chain.

Entrance Hallway

Door to the front, perfect space for coats and boots and door leading into the living room.

Living Room

A large proportion size with feature fireplace, UPVC double glazed triple aspect windows to the front, two radiators and door to the kitchen.

Kitchen

Comprising of wall and base units, work surfacing with sink drainer, further separate breakfast bar, Worcester combi boiler, large larder cupboard, windows to the front and space for cooker and washing machine.

Hallway

The hallway links the entire accommodation from one end to the other with three large storage areas, two storage cupboards and a third one of large proportion, that could be used as a study or for versatile use.

Bathroom

White tiled suite comprising bath with shower over, w.c and wash hand basin.

Bedroom One

Is of large proportions with UPVC double glazed triple window aspect, radiator and feature fireplace.

Bedroom Two

With radiator, double glazed UPVC window and door to the front giving access out to the communal gardens. This room could be used as a second reception or how you would see fit; a very versatile use of space.

Outside

There is a shared parking area for the building and large communal gardens that are accessed for all the three properties in the building. The garden shed is included with the property.

Agents Note

The property is Freehold and all outside space, communal areas and parking maintenance are divided by the three properties in the building. This is on an informal arrangement between all owners.

Contact Us

Towers Wills Estate

Agents - Yeovil

114, Hendford Hill

Yeovil

Somerset

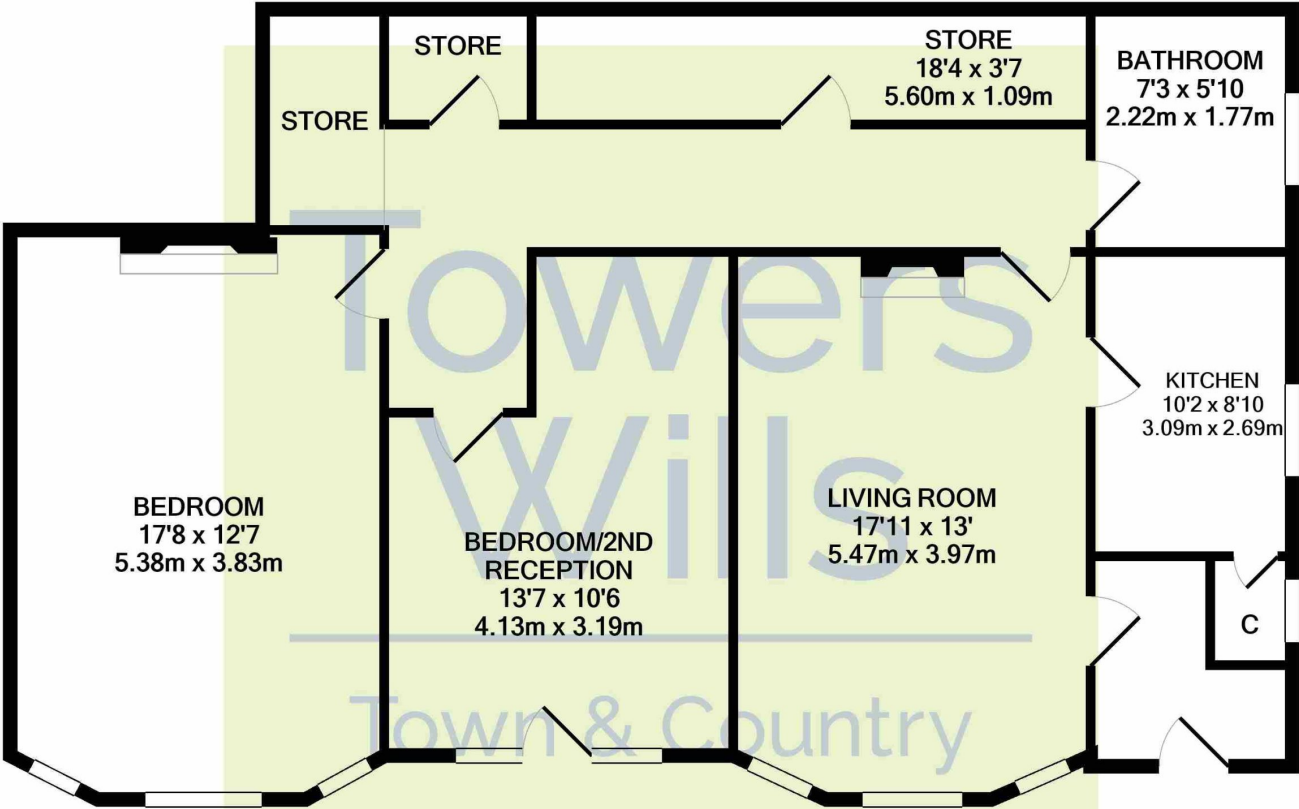
BA202RF

T: 01935 577032

E: info@towerswills.co.uk



Floor Plan



Whilst every attempt has been made to ensure the accuracy of the floor plan contained here, measurements of doors, windows, rooms and any other items are approximate and no responsibility is taken for any error, omission, or mis-statement. This plan is for illustrative purposes only and should be used as such by any prospective purchaser. The services, systems and appliances shown have not been tested and no guarantee as to their operability or efficiency can be given
Made with Metropix ©2022

Please Note No tests have been undertaken of any of the services and any intending purchasers should satisfy themselves in this regard. Towers Wills Ltd for themselves and for the vendor of this property whose agents they are, give notice that, (i) these particulars do not constitute any part of an offer or contract, (ii) all statements contained within these particulars are made without responsibility on the part of Towers Wills or the vendor , (iii) whilst made in good faith, none of the statements contained within these particulars are to be relied upon as a statement of representation or fact , (iv) any intending purchaser must satisfy him/herself by inspection or otherwise as to the correctness of each of the statements contained within these particulars, (v) the vendor does not make or give either Towers Wills or any person in their employment any authority to make or give representation or warranty whatsoever in relation to this property.

Photographs / Floor Plans Photographs are reproduced for general information and it must not be inferred that any item is included for sale with this property. Please note floor plans are not to scale and are for identification purposes only. The photographs used in these particulars may have been taken with the use of a wide angle lens. If you have any queries as to the size of the accommodation or plot, please address these with the agent prior to making an appointment to view