

Towers Wills

Town & Country

📞 01935 577 032 | 01460 298 530 | ✉ info@towerswills.co.uk



29, Collingwood Road, Yeovil, Somerset BA21 5FD
OIEO £170,000

Towers Wills are pleased to welcome to the market this immaculately presented and spacious 1st floor apartment in the most sought after development of Wyndham Park with views over to the surrounding countryside. The property is large, light and airy with large bay windows creating a wealth of light throughout the apartment. The property benefits from two double bedrooms, master en-suite, living area, kitchen/diner, family bathroom. Viewing strongly advised to appreciate all this property has to offer.

Entrance Hall

With storage cupboard, window, radiator and giving access to living room, kitchen, two bedrooms and bathroom.

Living Room 6.28m x 4.78m

Of large proportions with a large extended bay window, a further second window creating a wealth of light; this is a large and airy space perfect for entertaining.

Kitchen 4.32m x 4.28m

Comprising of a range of wall, base and drawer units, work surfacing with sink drainer, space for dining room table, integrated electric oven, induction hob with extractor over, built-in fridge freezer, integrated dishwasher and two windows creating a further wealth of light.

Family Bathroom 1.61m x 1.83m

Immaculately presented suite comprising bath with shower over, wash hand basin, w.c, fully tiled surround and radiator.

Bedroom One 4.33m x 4.32m

With a wall length built-in wardrobe storage, window and radiator.

En-suite 2.03m x 2.23m

Suite comprising corner shower cubicle, wash hand basin, w.c, heated towel rail and window to the front.

Bedroom Two 3.17m x 2.85m

Of double proportions with radiator and window to the front.

Outside

There is a carport with parking for one car and useful storage. Also a large secure communal cycle store room.

Key Features

- First Floor Apartment
- Two Double Bedrooms
- En-suite
- Carport
- Immaculately Presented

Contact Us

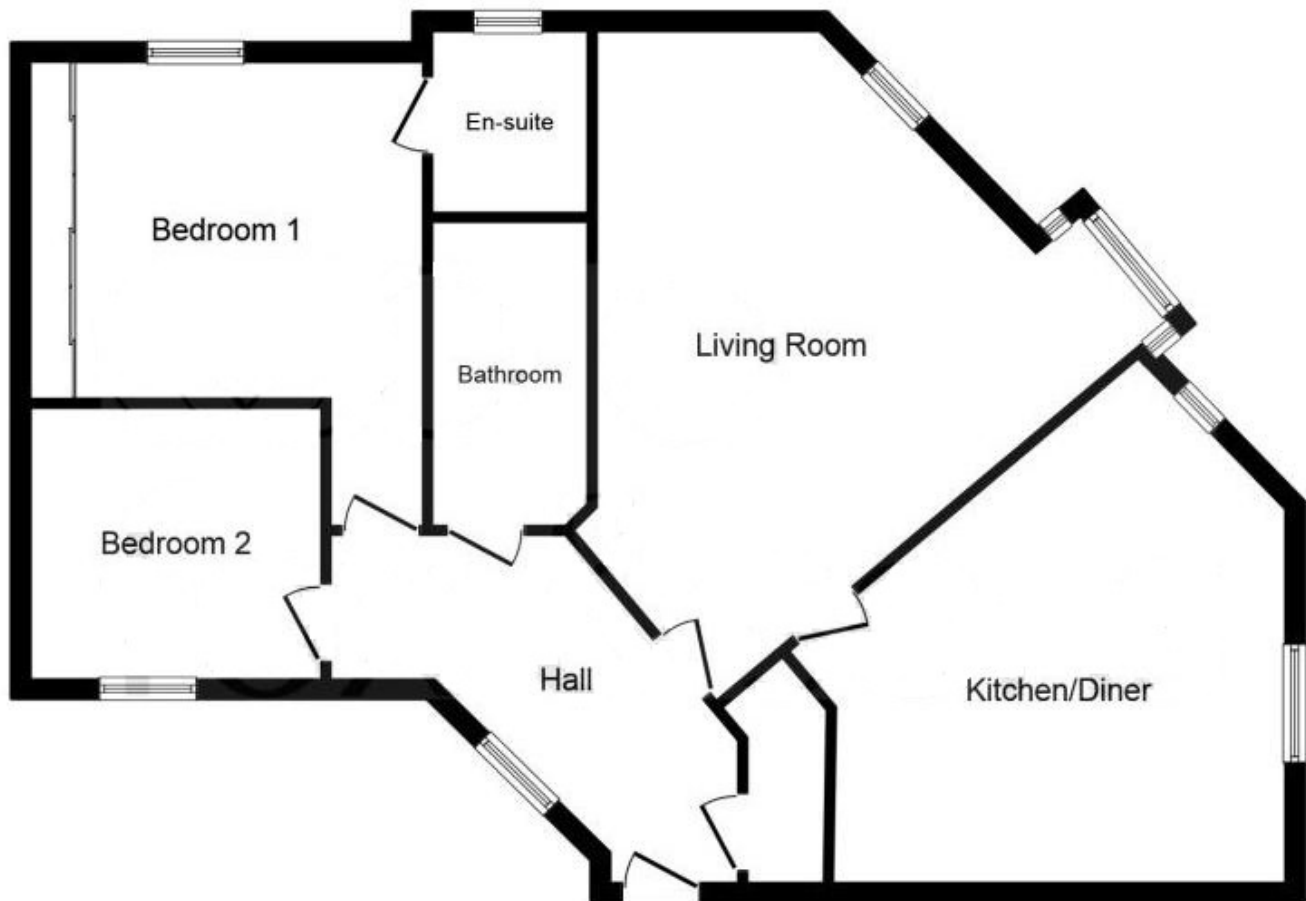
Towers Wills Estate Agents - Yeovil
114, Hendford Hill
Yeovil
Somerset
BA202RF
T: 01935 577032
E: info@towerswills.co.uk

Energy Efficiency

Score	Energy rating	Current	Potential
92+	A		
81-91	B	81 B	82 B
69-80	C		
55-68	D		
39-54	E		
21-38	F		
1-20	G		



Floor Plan



Floor Plan

Please Note No tests have been undertaken of any of the services and any intending purchasers should satisfy themselves in this regard. Towers Wills Ltd for themselves and for the vendor of this property whose agents they are, give notice that, (i) these particulars do not constitute any part of an offer or contract, (ii) all statements contained within these particulars are made without responsibility on the part of Towers Wills or the vendor, (iii) whilst made in good faith, none of the statements contained within these particulars are to be relied upon as a statement of representation or fact, (iv) any intending purchaser must satisfy him/herself by inspection or otherwise as to the correctness of each of the statements contained within these particulars, (v) the vendor does not make or give either Towers Wills or any person in their employment any authority to make or give representation or warranty whatsoever in relation to this property.

Photographs / Floor Plans Photographs are reproduced for general information and it must not be inferred that any item is included for sale with this property. Please note floor plans are not to scale and are for identification purposes only. The photographs used in these particulars may have been taken with the use of a wide angle lens. If you have any queries as to the size of the accommodation or plot, please address these with the agent prior to making an appointment to view

Towers Wills

The White House, 114 Hendford Hill, Yeovil BA20 2RF

Yeovil 01935 577032 / South Petherton 01460 298530

info@towerswills.co.uk | www.towerswills.co.uk