

# Towers Wills

Town & Country

☎ 01935 577 032 | 01460 298 530 | ✉ [info@towerswills.co.uk](mailto:info@towerswills.co.uk)



**72, Great Mead, Yeovil, Somerset BA21 5BP**

**£250,000**

Towers Wills are pleased to bring to market this well-presented townhouse on the outskirts of the popular Wyndham Park Estate. New in 2015, this modern three-bed family home includes allocated parking for two, downstairs WC, kitchen and family/dining area. To the first floor the lounge, bathroom and bedroom with a further two bedrooms and ensuite on the second floor.

### Entrance Hall

Double glazed door to the front and radiator.

### Utility Cupboard

With space for washing machine, space for dryer, central heating boiler and extractor fan.

### Study 2.43m x 1.96m

Radiator and double glazed window to the front.

### Downstairs W.C

Wash hand basin, w.c, radiator and extractor fan.

### Kitchen/Diner 4.17m x 7.47m – maximum measurements

### Dining Area

Two radiators, under stairs cupboard, double glazed windows and French doors to the rear garden.

### Kitchen Area

Comprising of a range of wall, base and drawer units, work surfacing with stainless steel one and a half bowl sink drainer, space for dishwasher, integrated six ring gas hob with cookerhood over, integrated double electric oven and space for fridge freezer.

### First Floor Landing

Radiator and stairs leading to the second floor.

### First Floor Lounge 3.34m x 4.15m

Two radiators and two double glazed windows to the rear.

### Bathroom

Suite comprising bath, wash hand basin, w.c, extractor fan and heated towel rail.

### Bedroom Three 4.15m x 3.01m – maximum measurements

Radiator and two double glazed windows to the front.

### Second Floor Landing

Includes loft hatch and airing cupboard which includes the tank.

### Bedroom One 3.34m x 3.59m plus wardrobe

Radiator and two double glazed windows to the rear.

### En-suite

Suite comprising shower cubicle, wash hand basin, w.c, extractor fan, heated towel rail and door to the landing.

### Bedroom Two 2.98m x 4.16m – maximum measurements

Radiator, two double glazed windows to the front and freestanding wardrobe included.

### Rear Garden

## Key Features

- Well Presented Townhouse
- Three Bedrooms
- En-suite
- Popular Wyndham Park Development
- Allocated Parking
- Rear Garden

## Contact Us

### Towers Wills Estate Agents - Yeovil

114, Hendford Hill

Yeovil

Somerset

BA202RF

T: 01935 577032

E: [info@towerswills.co.uk](mailto:info@towerswills.co.uk)

## Energy Efficiency

Score	Energy rating	Current	Potential
92+	A		94   A
81-91	B	83   B	
69-80	C		
55-68	D		
39-54	E		
21-38	F		
1-20	G		

To the rear there is an area of AstroTurf, patio area, outside tap, storage shed and rear gate leading to allocated parking for two vehicles in tandem.

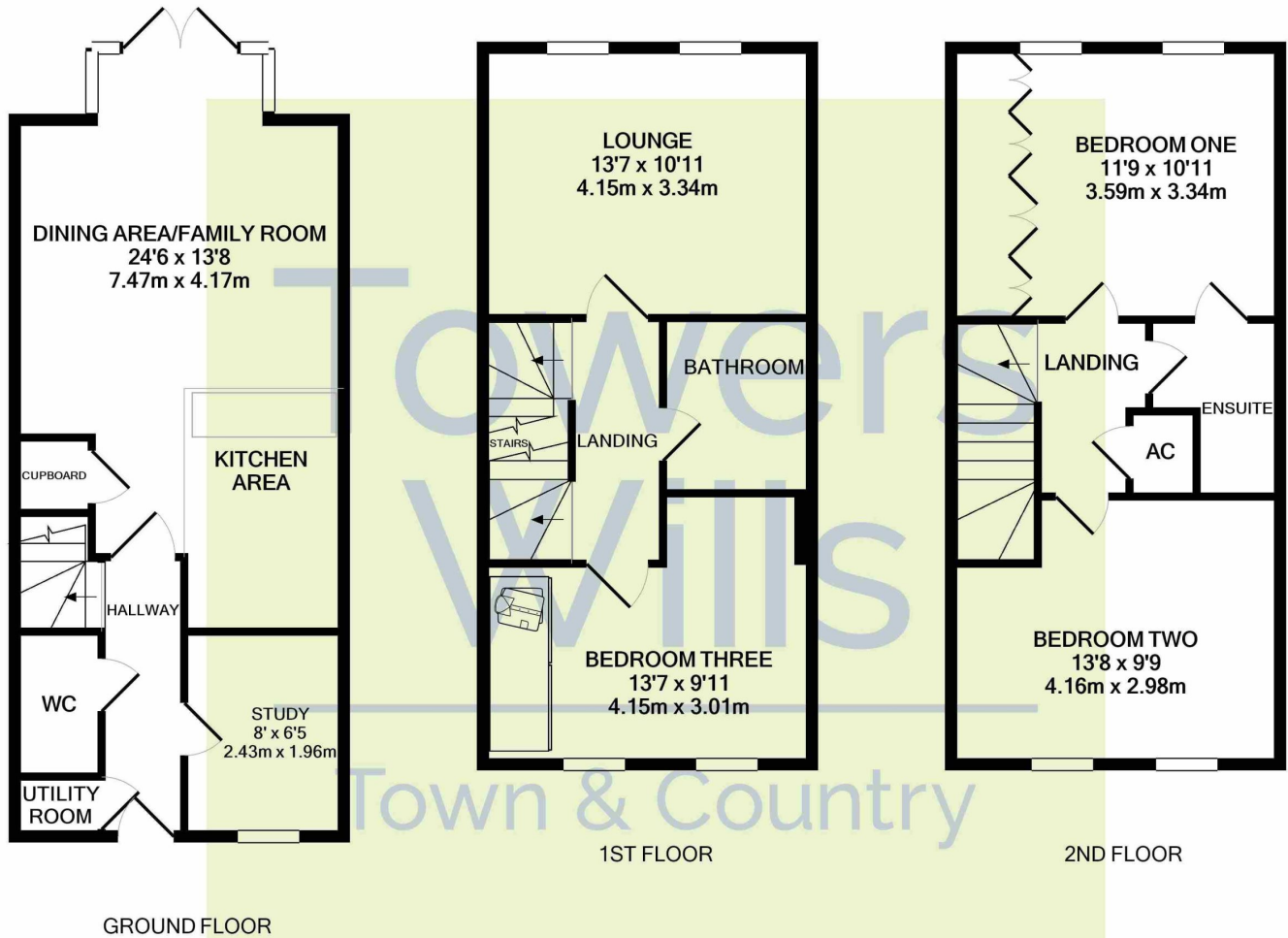
**Agents Note**

The vendor has advised Towers Wills that the property is subject to a £55 per 6 months maintenance charge to cover communal areas of Wyndham Park and that there is a Tado smart heating system with a thermostat in the downstairs hall and a separate thermostat in the master bedroom. In the remaining two bedrooms and lounge there are smart thermostatic valves on the radiators (this allows temperatures to be adjusted per room throughout the property).





# Floor Plan



Whilst every attempt has been made to ensure the accuracy of the floor plan contained here, measurements of doors, windows, rooms and any other items are approximate and no responsibility is taken for any error, omission, or mis-statement. This plan is for illustrative purposes only and should be used as such by any prospective purchaser. The services, systems and appliances shown have not been tested and no guarantee as to their operability or efficiency can be given  
 Made with Metropix ©2022

Please Note No tests have been undertaken of any of the services and any intending purchasers should satisfy themselves in this regard. Towers Wills Ltd for themselves and for the vendor of this property whose agents they are, give notice that, (i) these particulars do not constitute any part of an offer or contract, (ii) all statements contained within these particulars are made without responsibility on the part of Towers Wills or the vendor, (iii) whilst made in good faith, none of the statements contained within these particulars are to be relied upon as a statement of representation or fact, (iv) any intending purchaser must satisfy him/herself by inspection or otherwise as to the correctness of each of the statements contained within these particulars, (v) the vendor does not make or give either Towers Wills or any person in their employment any authority to make or give representation or warranty whatsoever in relation to this property.

Photographs / Floor Plans Photographs are reproduced for general information and it must not be inferred that any item is included for sale with this property. Please note floor plans are not to scale and are for identification purposes only. The photographs used in these particulars may have been taken with the use of a wide angle lens. If you have any queries as to the size of the accommodation or plot, please address these with the agent prior to making an appointment to view

**Towers Wills**

The White House, 114 Hendford Hill, Yeovil BA20 2RF

Yeovil 01935 577032 / South Petherton 01460 298530

[info@towerswills.co.uk](mailto:info@towerswills.co.uk) | [www.towerswills.co.uk](http://www.towerswills.co.uk)