

Towers Wills

Town & Country

📞 01935 577 032 | 01460 298 530 | ✉ info@towerswills.co.uk



25, Beaconfield Road, Yeovil, Somerset BA20 2JW

Guide Price £600,000

Towers Wills welcome to the market this fine detached family home situated in one of the towns most desirable residential locations, set back from West Coker Road and within easy reach of the local park and countryside walks. The property is presented to an exceptionally high standard throughout where viewing is strongly advised to fully appreciate this stunning home. Briefly comprising; hallway, cloak w.c, living room, dining room, kitchen/breakfast room, utility room, five bedrooms, two en-suites, bathroom, driveway, garage and large garden.

Hallway

A spacious reception area with door to the front and radiator.

Cloak W.C

Comprising w.c, wash hand basin, tiled floor, radiator and under stairs storage cupboard.

Living Room

A spacious family living area with window to the front, radiator, woodburning stove making a particularly attractive feature to the room with blue Lias stone hearth and timber mantel over.

Dining Room

With pleasant outlook onto the rear garden, double doors opening out to garden and radiator.

Kitchen/Breakfast Room

Comprising of a range of wall, base, glazed display cabinets and drawer units, work surfacing with inset sink/drain, American style fridge/freezer, under cupboard lighting, Range cooker with cookerhood over, integral microwave, door to the side and being open plan to the breakfast area.

Breakfast Area

With ample room for table and chairs, tiled floor, two radiators, door to the side, door to utility room and double doors opening out onto the rear garden.

Utility Room

Comprising of wall and base units, work surfacing, plumbing for washing machine, space for tumble dryer and door to the garage.

First Floor Landing

With stairs from both reception hallway and additional side entrance (the additional side entrance could be used if somebody wished to introduce annexe style accommodation), window to the side and loft access.

Master Bedroom

With window to the rear, radiator and door to the en-suite.

En-suite

An immaculately fitted suite comprising of shower cubicle, wash hand basin, w.c, window to the rear, heated towel rail and shaver point.

Bedroom Two

With window to the front with far reaching countryside views, fitted wardrobe, radiator and door to en-suite.

En-suite

Comprising of shower cubicle, wash hand basin, w.c, extractor fan and shaver point.

Bedroom Three

Key Features

- Five Bedrooms
- Annexe Potential
- Versatile Accommodation
- Magnificent Large Mature Garden
- Highly Desirable Location
- Viewing Essential

Contact Us

Towers Wills Estate Agents - Yeovil

114, Hendford Hill

Yeovil

Somerset

BA202RF

T: 01935 577032

E: info@towerswills.co.uk

Energy Efficiency

Score	Energy rating	Current	Potential
92+	A		
81-91	B		81 B
69-80	C	71 C	
55-68	D		
39-54	E		
21-38	F		
1-20	G		

With window to the front with far reaching countryside views, radiator and two double built-in sliding wardrobes.

Bedroom Four

With window to the front with far reaching countryside views, radiator and double built-in wardrobe.

Bedroom Five

With window to the rear with pleasant outlook across the rear garden, radiator and built-in single wardrobe.

Bathroom

A quality fitted bathroom suite comprising of bath, separate shower cubicle, wash hand basin, w.c, fully tiled, heated towel rail, shaver point and window to the rear.

Outside

Front Garden

To the front of the property is a driveway providing ample off road parking and turning for several vehicles, in turn leading to the garage.

Garage 4.76m x 2.62m

With 'up and over' door, power, light and door to the utility room. The garage could offer additional annexe style accommodation if required (subject to planning permission).

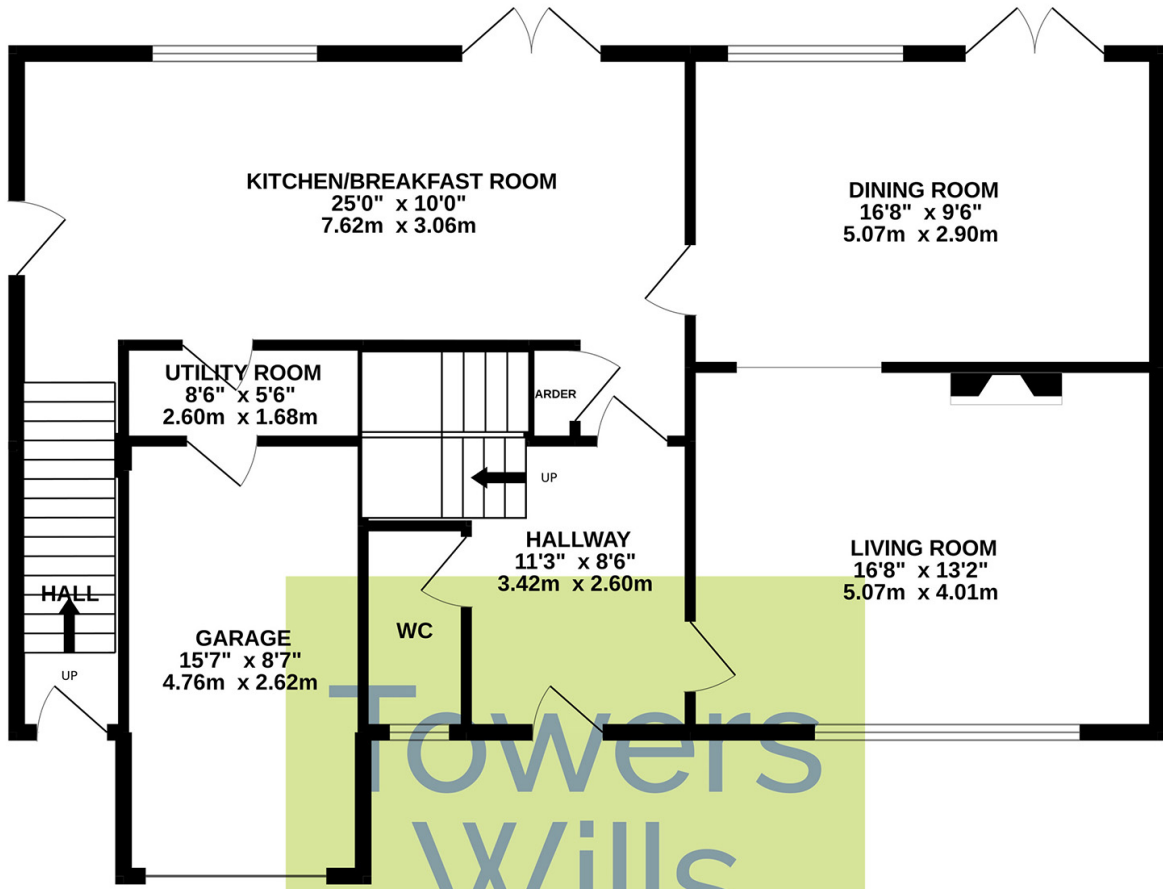
Rear Garden

One of the true selling features of this property must be this large mature garden. A large patio area provides ample space for summer entertaining with outside tap, outside light and in turn leads to both an area of lawn and further seating area laid to stone chipping. The large area of lawn is bordered by a variety of mature plants, trees and shrubs. An archway leads to a vegetable plot/kitchen garden; offering several planters, wooden store, two garden sheds, greenhouse and additional seating area. There is gated side access to both sides.

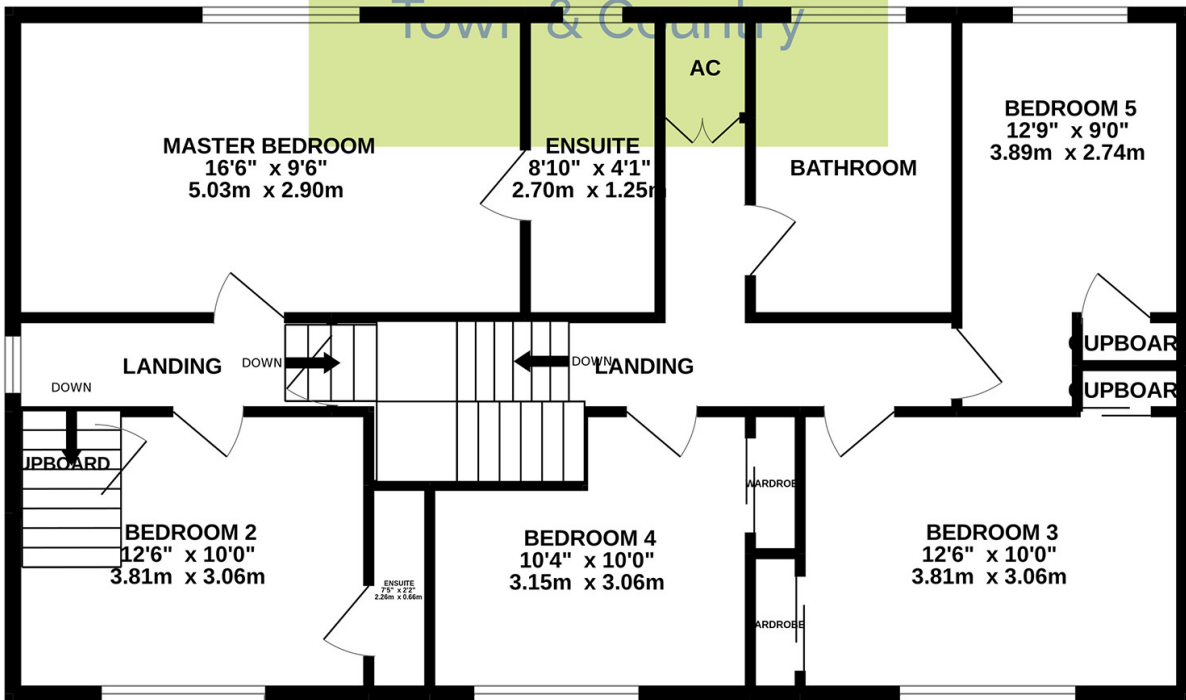


Floor Plan

GROUND FLOOR



1ST FLOOR



Whilst every attempt has been made to ensure the accuracy of the floorplan contained here, measurements of doors, windows, rooms and any other items are approximate and no responsibility is taken for any error, omission or mis-statement. This plan is for illustrative purposes only and should be used as such by any prospective purchaser. The services, systems and appliances shown have not been tested and no guarantee as to their operability or efficiency can be given.
Made with Metropix ©2022

Please Note No tests have been undertaken of any of the services and any intending purchasers should satisfy themselves in this regard. Towers Wills Ltd for themselves and for the vendor of this property whose agents they are, give notice that, (i) these particulars do not constitute any part of an offer or contract, (ii) all statements contained within these particulars are made without responsibility on the part of Towers Wills or the vendor, (iii) whilst made in good faith, none of the statements contained within these particulars are to be relied upon as a statement of representation or fact, (iv) any intending purchaser must satisfy him/herself by inspection or otherwise as to the correctness of each of the statements contained within these particulars, (v) the vendor does not make or give either Towers Wills or any person in their employment any authority to make or give representation or warranty whatsoever in relation to this property.

Photographs / Floor Plans Photographs are reproduced for general information and it must not be inferred that any item is included for sale with this property. Please note floor plans are not to scale and are for identification purposes only. The photographs used in these particulars may have been taken with the use of a wide angle lens. If you have any queries as to the size of the accommodation or plot, please address these with the agent prior to making an appointment to view

Towers Wills

The White House, 114 Hendford Hill, Yeovil BA20 2RF

Yeovil 01935 577032 / South Petherton 01460 298530

info@towerswills.co.uk | www.towerswills.co.uk