

Towers Wills

Town & Country

☎ 01935 577 032 | 01460 298 530 | ✉ info@towerswills.co.uk



105, Westbourne Grove, Yeovil, Somerset BA20 2DG

Guide Price £250,000

Towers Wills welcome to the market this well presented two bedroom plus loft room, semi-detached bungalow situated in a sought-after location. The accommodation briefly comprises; reception hallway, kitchen, lounge/diner, conservatory, two bedrooms, loft room, driveway, garage and south facing garden. No onward chain.

Hallway

With door to the front, radiator and laminate flooring.

Kitchen

A well presented fitted kitchen comprising of a range of wall, base and drawer units, work surfacing with inset stainless steel sink/drainers, space for cooker, plumbing for washing machine, space for fridge freezer, tiling to splash prone areas and window to the side.

Lounge/Diner

Being a light and spacious living area with patio doors to the conservatory, window to the rear, gas feature fireplace and radiator.

Conservatory

With tiled floor, window and patio doors to the rear garden.

Bedroom One

With bay fronted window to the front, radiator and fitted wardrobes.

Bedroom Two

With window to the front, radiator and staircase to the loft room.

Bathroom

Suite comprising of shower cubicle, wash hand basin, w.c, fully tiled, heated towel rail and window to the side.

Loft Room

With stairs from bedroom two, velux window to the rear and storage to the eaves.

Outside

To the side of the property is a large driveway providing ample off road parking and in turn leading to the garage.

Garage

With 'up and over' door, power and light.

Rear Garden

Enjoying a southerly sunny aspect; the garden is majority laid to lawn with patio area, stocked borders with a variety of plants and shrubs and gated rear access.

Key Features

- Two Bedrooms plus Loft Room
- Conservatory
- Sought-after Location
- South Facing Garden
- Large Driveway
- No Onward Chain

Contact Us

Towers Wills Estate Agents - Yeovil

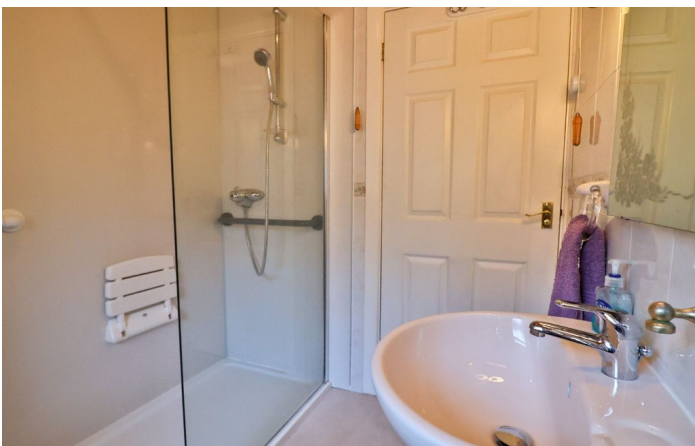
114, Hendford Hill
Yeovil

Somerset

BA202RF

T: 01935 577032

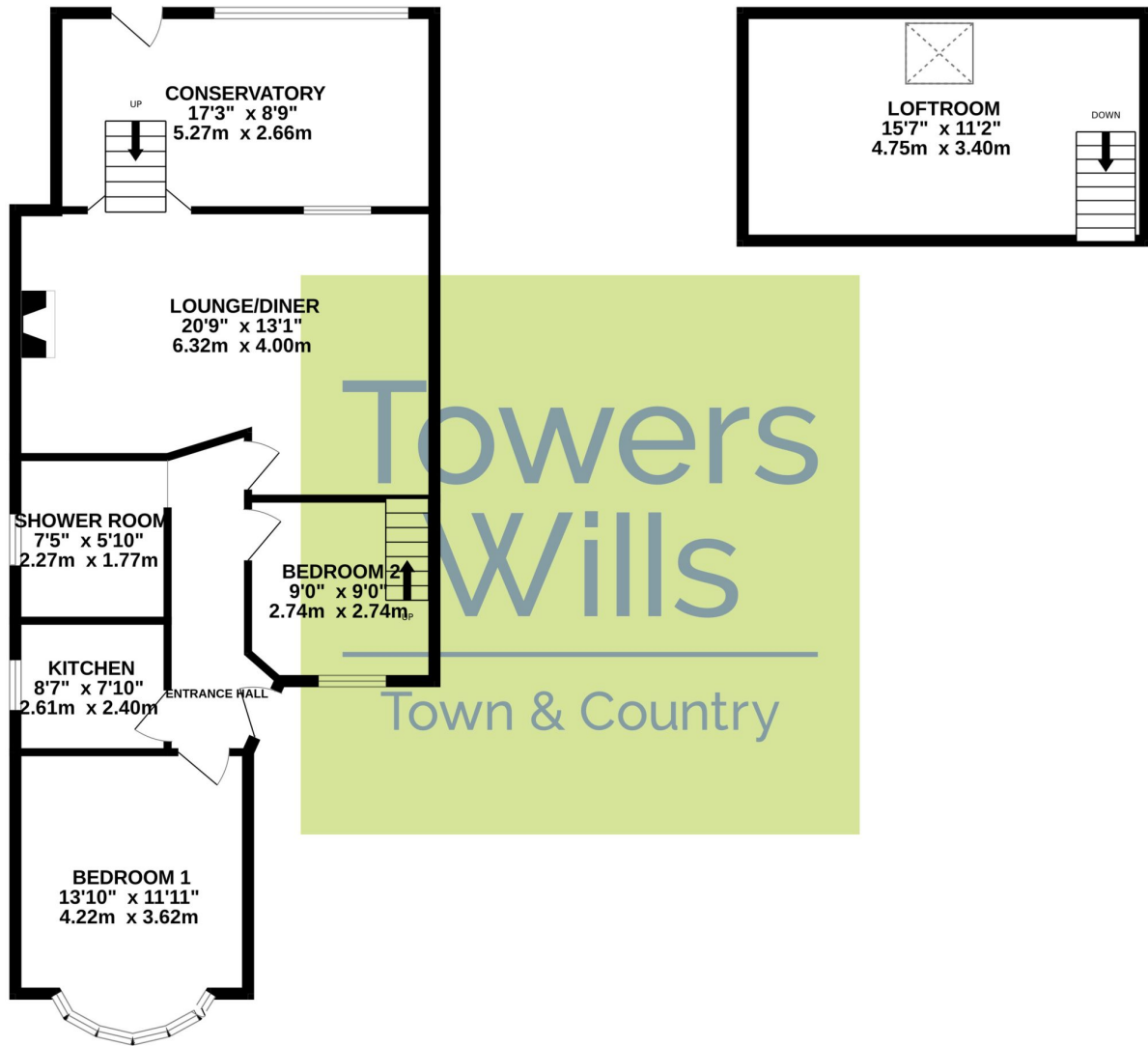
E: info@towerswills.co.uk



Floor Plan

GROUND FLOOR

1ST FLOOR



Whilst every attempt has been made to ensure the accuracy of the floorplan contained here, measurements of doors, windows, rooms and any other items are approximate and no responsibility is taken for any error, omission or mis-statement. This plan is for illustrative purposes only and should be used as such by any prospective purchaser. The services, systems and appliances shown have not been tested and no guarantee as to their operability or efficiency can be given.
Made with Metropix ©2022

Please Note No tests have been undertaken of any of the services and any intending purchasers should satisfy themselves in this regard. Towers Wills Ltd for themselves and for the vendor of this property whose agents they are, give notice that, (i) these particulars do not constitute any part of an offer or contract, (ii) all statements contained within these particulars are made without responsibility on the part of Towers Wills or the vendor, (iii) whilst made in good faith, none of the statements contained within these particulars are to be relied upon as a statement of representation or fact, (iv) any intending purchaser must satisfy him/herself by inspection or otherwise as to the correctness of each of the statements contained within these particulars, (v) the vendor does not make or give either Towers Wills or any person in their employment any authority to make or give representation or warranty whatsoever in relation to this property.

Photographs / Floor Plans Photographs are reproduced for general information and it must not be inferred that any item is included for sale with this property. Please note floor plans are not to scale and are for identification purposes only. The photographs used in these particulars may have been taken with the use of a wide angle lens. If you have any queries as to the size of the accommodation or plot, please address these with the agent prior to making an appointment to view

Towers Wills

The White House, 114 Hendford Hill, Yeovil BA20 2RF

Yeovil 01935 577032 / South Petherton 01460 298530

info@towerswills.co.uk | www.towerswills.co.uk