

# Towers Wills

Town & Country

📞 01935 577 032 | 01460 298 530 | ✉ info@towerswills.co.uk



5, Finch Close, Yeovil, Somerset BA22 8FX

Offers Over **£200,000**

Towers Wills welcome to the market this exceptionally spacious two bedroom coach house situated in Augusta Park, presented to a show home standard throughout where viewing is essential to fully appreciate this beautiful home. The property briefly comprises; entrance, open plan living area, quality fitted kitchen, two large double bedrooms, bathroom, parking and garage.

## Entrance

Door to the front and stairs rise to the hallway.

## Hallway

Window to the rear, radiator and loft access.

## Open Plan Living Room/Kitchen

A large open plan dual aspect living area with two double glazed windows to the front, window to the rear, radiator and plenty of space for a lounge area and dining area.

## Kitchen

A well presented fully fitted kitchen comprising of a range of wall, base and drawer units, work surfacing with inset stainless steel sink/drain, space for fridge/freezer, space for washing machine, integrated electric oven and integrated gas hob with cookerhood over.

## Bedroom One

Window to the front and radiator.

## Bedroom Two

Window to the rear and radiator.

## Bathroom

An immaculately presented suite comprising of bath with shower over, wash hand basin, w.c, tiling, extractor fan, radiator and window to the front.

## Parking

There is allocated parking for one vehicle.

## Garage

With 'up and over' door.

## Key Features

- Coach House
- Show Home Standard
- Two Double Bedrooms
- Parking
- Garage

## Contact Us

### Towers Wills Estate Agents - Yeovil

114, Hendford Hill  
Yeovil

Somerset

BA202RF

T: 01935 577032

E: [info@towerswills.co.uk](mailto:info@towerswills.co.uk)

## Energy Efficiency

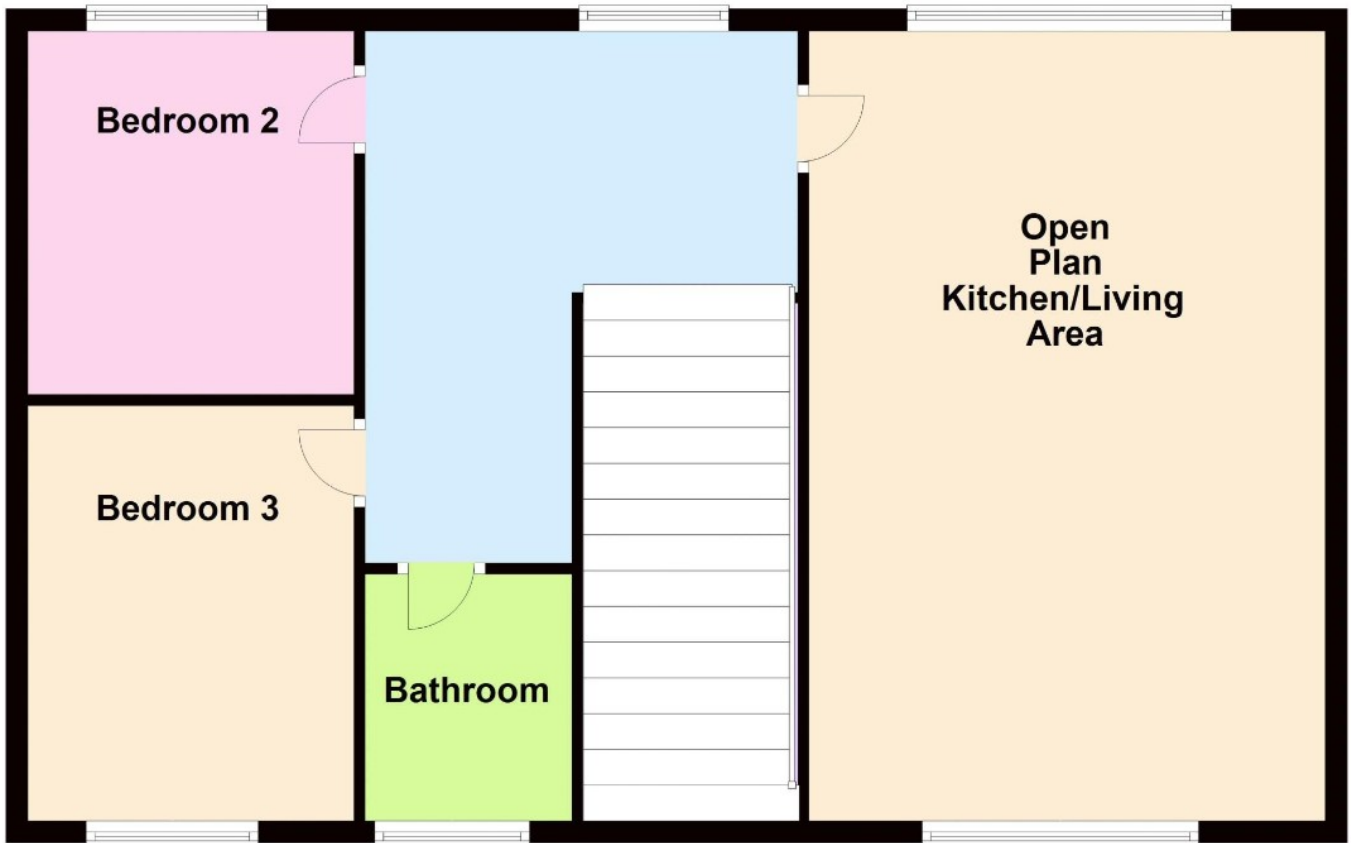
Score	Energy rating	Current	Potential
92+	A		
81-91	B		
69-80	C	80   c	80   c
55-68	D		
39-54	E		
21-38	F		
1-20	G		





# Floor Plan

## Ground Floor



Floor plan to be used as a guidance only.  
Plan produced using PlanUp.

Please Note No tests have been undertaken of any of the services and any intending purchasers should satisfy themselves in this regard. Towers Wills Ltd for themselves and for the vendor of this property whose agents they are, give notice that, (i) these particulars do not constitute any part of an offer or contract, (ii) all statements contained within these particulars are made without responsibility on the part of Towers Wills or the vendor, (iii) whilst made in good faith, none of the statements contained within these particulars are to be relied upon as a statement of representation or fact, (iv) any intending purchaser must satisfy him/herself by inspection or otherwise as to the correctness of each of the statements contained within these particulars, (v) the vendor does not make or give either Towers Wills or any person in their employment any authority to make or give representation or warranty whatsoever in relation to this property.

Photographs / Floor Plans Photographs are reproduced for general information and it must not be inferred that any item is included for sale with this property. Please note floor plans are not to scale and are for identification purposes only. The photographs used in these particulars may have been taken with the use of a wide angle lens. If you have any queries as to the size of the accommodation or plot, please address these with the agent prior to making an appointment to view

**Towers Wills**

The White House, 114 Hendford Hill, Yeovil BA20 2RF

Yeovil 01935 577032 / South Petherton 01460 298530

[info@towerswills.co.uk](mailto:info@towerswills.co.uk) | [www.towerswills.co.uk](http://www.towerswills.co.uk)