

# Towers Wills

Town & Country

☎ 01935 577 032 | 01460 298 530 | ✉ [info@towerswills.co.uk](mailto:info@towerswills.co.uk)



7, Kite Place, Yeovil, Somerset BA22 8BS

Offers Over **£235,000**

Towers Wills welcome to the market this three bedroom terraced property situated in Augusta Park. The property briefly comprises; hall, downstairs w.c, kitchen/diner, lounge, three bedrooms, family bathroom, rear garden and allocated parking.

**Hallway** 2.26m x 3.95m

Radiator, stairs to first floor and under stairs storage cupboard.

**Downstairs W.C**

With low level w.c, wash hand basin and window.

**Kitchen/Diner** 4.95m x 2.99m – maximum measurements

Comprising of a range of wall, base and drawer units, work surfacing with stainless steel sink drainer, space for washing machine, space for fridge freezer, fitted four ring hob with extractor fan, integrated cooker, integrated slimline dishwasher, boiler and radiator.

**Lounge** 5.59m x 2.85m – maximum measurements

Radiator, door to the garden, windows to the front and rear.

**First Floor Landing**

With storage cupboard and window.

**Bedroom One** 2.92m x 3.16m – maximum measurements

Window to the rear, built-in wardrobes and radiator.

**Bedroom Two** 2.47m x 4.13m – maximum measurements

Window to the rear and radiator.

**Bedroom Three** 2.62m x 2.78m – maximum measurements

Window to the front and radiator.

**Bathroom**

Suite comprising bath with shower over, wash hand basin, w.c, window to the front and radiator.

**Rear Garden**

To the rear of the property the garden is laid to lawn and is fully enclosed.

**Parking**

There is one allocated parking space to the front.

## Key Features

- Terraced
- Three Bedrooms
- Augusta Park Development
- Rear Garden
- Allocated Parking

## Contact Us

**Towers Wills Estate Agents - Yeovil**

114, Hendford Hill

Yeovil

Somerset

BA202RF

T: 01935 577032

E: [info@towerswills.co.uk](mailto:info@towerswills.co.uk)

## Energy Efficiency

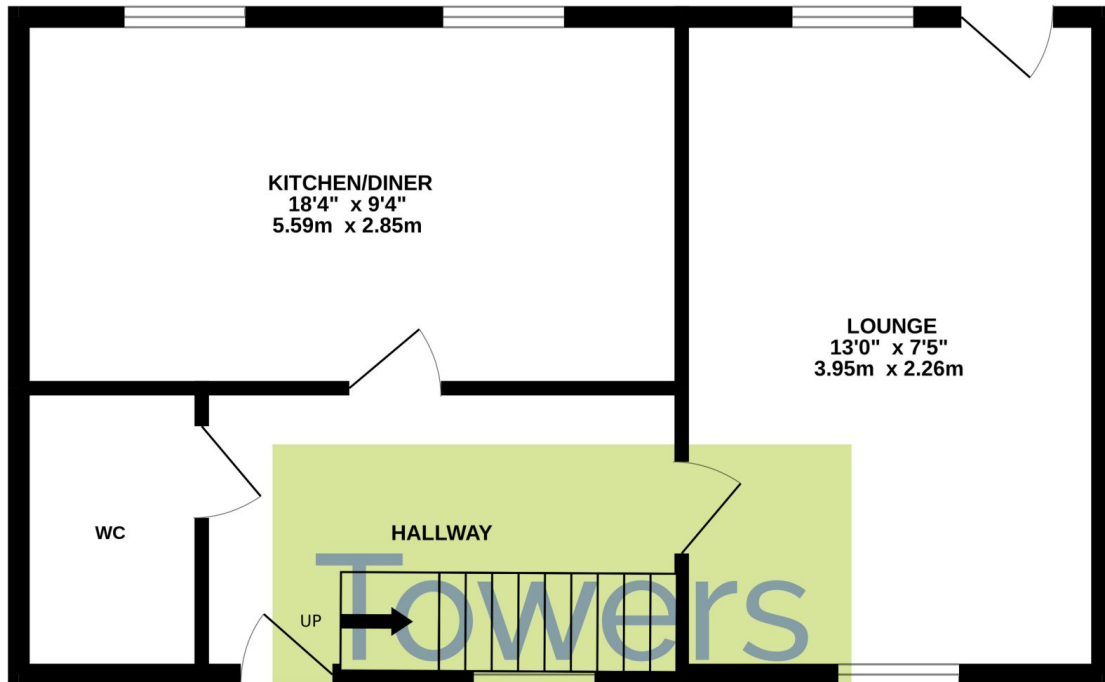
Score	Energy rating	Current	Potential
92+	A		95   A
81-91	B	83   B	
69-80	C		
55-68	D		
39-54	E		
21-38	F		
1-20	G		



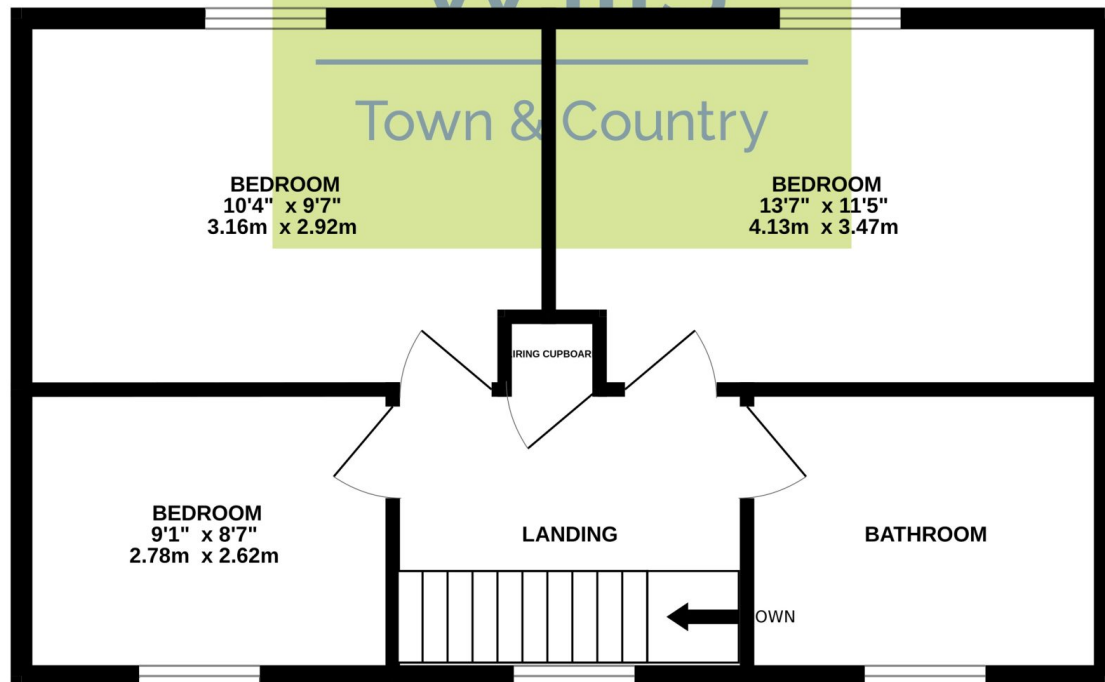


# Floor Plan

## GROUND FLOOR



## 1ST FLOOR



Whilst every attempt has been made to ensure the accuracy of the floorplan contained here, measurements of doors, windows, rooms and any other items are approximate and no responsibility is taken for any error, omission or mis-statement. This plan is for illustrative purposes only and should be used as such by any prospective purchaser. The services, systems and appliances shown have not been tested and no guarantee as to their operability or efficiency can be given.  
Made with Metropix ©2023

Please Note No tests have been undertaken of any of the services and any intending purchasers should satisfy themselves in this regard. Towers Wills Ltd for themselves and for the vendor of this property whose agents they are, give notice that, (i) these particulars do not constitute any part of an offer or contract, (ii) all statements contained within these particulars are made without responsibility on the part of Towers Wills or the vendor, (iii) whilst made in good faith, none of the statements contained within these particulars are to be relied upon as a statement of representation or fact, (iv) any intending purchaser must satisfy him/herself by inspection or otherwise as to the correctness of each of the statements contained within these particulars, (v) the vendor does not make or give either Towers Wills or any person in their employment any authority to make or give representation or warranty whatsoever in relation to this property.

Photographs / Floor Plans Photographs are reproduced for general information and it must not be inferred that any item is included for sale with this property. Please note floor plans are not to scale and are for identification purposes only. The photographs used in these particulars may have been taken with the use of a wide angle lens. If you have any queries as to the size of the accommodation or plot, please address these with the agent prior to making an appointment to view

**Towers Wills**

The White House, 114 Hendford Hill, Yeovil BA20 2RF

Yeovil 01935 577032 / South Petherton 01460 298530

[info@towerswills.co.uk](mailto:info@towerswills.co.uk) | [www.towerswills.co.uk](http://www.towerswills.co.uk)