

# Towers Wills

Town & Country

📞 01935 577 032 | 01460 298 530 | ✉ info@towerswills.co.uk



13, Richmond Rd, Yeovil, Somerset BA20 1BA

**£220,000**

Towers Wills are pleased to bring to market this semi-detached home in need of modernisation. The property sits within a good-sized plot with a large rear garden and offers; off-road driveway parking to the front, open plan lounge/diner, kitchen, three bedrooms (two double) and a family bathroom.

## Description

Towers Wills are pleased to bring to market this semi-detached home in need of modernisation. The property sits within a good-sized plot with a large rear garden and offers; off-road driveway parking to the front, open plan lounge/diner, kitchen, three bedrooms (two double) and a family bathroom.

## Entrance Hall

With storm porch to the front, double glazed door to the front and under stairs cupboard.

## Kitchen 2.80m x 1.90m – maximum measurements

Comprising of a range of wall, base and drawer units, work surfacing with stainless steel one bowl sink drainer, double glazed door to the side, double glazed window to the side, integrated electric hob and integrated electric oven.

## Lounge/Diner 7.81m x 3.13m – maximum measurements

Gas fireplace, double glazed window to the front and double glazed patio doors to the rear.

## First Floor Landing

Double glazed window to the side, loft hatch and cupboard.

## Bathroom

Suite comprising bath with electric shower over, wash hand basin, w.c, and double glazed window to the rear.

## Bedroom One 4.09m x 2.92m – maximum measurements

Double glazed window to the front.

## Bedroom Two 3.76m x 3.00m – maximum measurements

Double glazed window to the rear and airing cupboard including water tank.

## Bedroom Three 1.91m x 2.41m – maximum measurements

Double glazed window to the front.

## Front Garden

The property has driveway parking to the front and side access.

## Rear Garden

To the rear there is a good size rear garden.

## Agent Note

Planning permission for erection of two storey and single storey dwellings.

Application No: 22/00293/HOU

## Key Features

- Semi-detached
- Three Bedrooms
- Driveway Parking
- Large Rear Garden

## Contact Us

### Towers Wills Estate Agents - Yeovil

114, Hendford Hill

Yeovil

Somerset

BA202RF

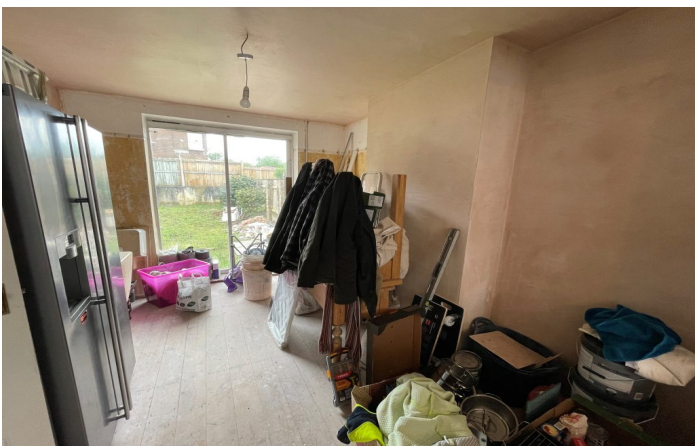
T: 01935 577032

E: [info@towerswills.co.uk](mailto:info@towerswills.co.uk)

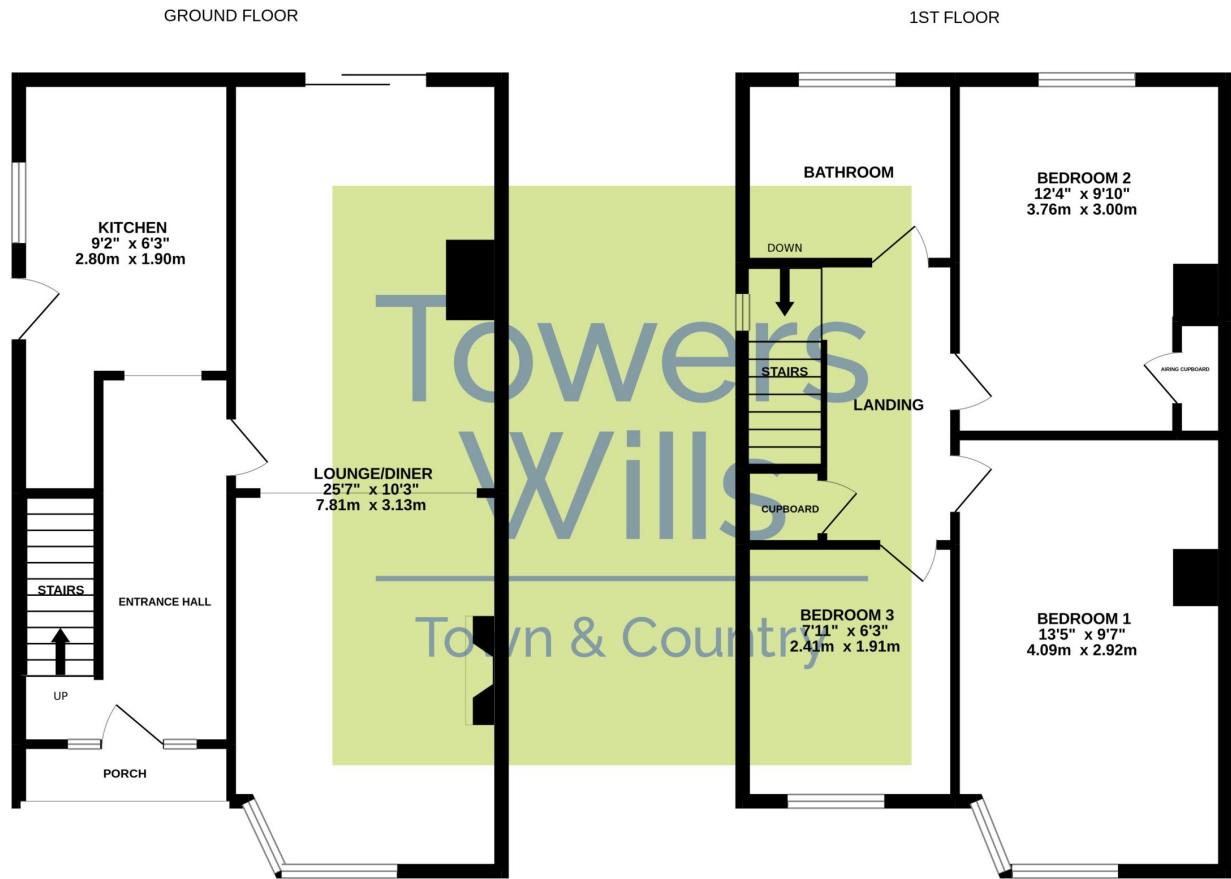
## Energy Efficiency

Score	Energy rating	Current	Potential
92+	A		
81-91	B		87   B
69-80	C		
55-68	D		
39-54	E	46   E	
21-38	F		
1-20	G		





# Floor Plan



Whilst every attempt has been made to ensure the accuracy of the floorplan contained here, measurements of doors, windows, rooms and any other items are approximate and no responsibility is taken for any error, omission or mis-statement. This plan is for illustrative purposes only and should be used as such by any prospective purchaser. The services, systems and appliances shown have not been tested and no guarantee as to their operability or efficiency can be given.  
Made with Metropix ©2022

Please Note No tests have been undertaken of any of the services and any intending purchasers should satisfy themselves in this regard. Towers Wills Ltd for themselves and for the vendor of this property whose agents they are, give notice that, (i) these particulars do not constitute any part of an offer or contract, (ii) all statements contained within these particulars are made without responsibility on the part of Towers Wills or the vendor, (iii) whilst made in good faith, none of the statements contained within these particulars are to be relied upon as a statement of representation or fact, (iv) any intending purchaser must satisfy him/herself by inspection or otherwise as to the correctness of each of the statements contained within these particulars, (v) the vendor does not make or give either Towers Wills or any person in their employment any authority to make or give representation or warranty whatsoever in relation to this property.

Photographs / Floor Plans Photographs are reproduced for general information and it must not be inferred that any item is included for sale with this property. Please note floor plans are not to scale and are for identification purposes only. The photographs used in these particulars may have been taken with the use of a wide angle lens. If you have any queries as to the size of the accommodation or plot, please address these with the agent prior to making an appointment to view

**Towers Wills**

The White House, 114 Hendford Hill, Yeovil BA20 2RF

Yeovil 01935 577032 / South Petherton 01460 298530

[info@towerswills.co.uk](mailto:info@towerswills.co.uk) | [www.towerswills.co.uk](http://www.towerswills.co.uk)