

# Towers Wills

Town & Country

📞 01935 577 032 | 01460 298 530 | ✉ info@towerswills.co.uk



**175, Huish, Yeovil, Somerset BA20 1BW**

**£200,000**

Towers Wills are delighted to bring to market this well-presented, terraced home situated close to local amenities and just a half mile walk to Yeovil town centre. The property benefits from large open plan lounge/dining area and kitchen downstairs, two bedrooms and large bathroom (with separate shower cubicle) to the first floor and the third double bedroom/loftroom to the second floor. An ideal first time buy!

## Entrance Hall

Double glazed door to the front and radiator.

## Lounge/Diner 3.43m x 7.38m – maximum measurements

Double glazed bay window to the front, double glazed window to the rear, two radiators, fireplace and under stairs cupboard.

## Kitchen 2.62m x 4.50m – maximum measurements

Comprising of a range of wall, base and drawer units, work surfacing with stainless steel one bowl sink drainer, integrated gas hob with extractor hood over, integrated electric oven, space for dishwasher, space for washing machine, space for fridge freezer, gas central heating boiler, double glazed doors to the rear, double glazed window to the side, single glazed stable doors to the side.

## First Floor Landing

With cupboard and additional stairs to the first floor.

## Bathroom 2.57m x 3.59m – maximum measurements

Suite comprising bath with centre tap and mixer shower, low level shower cubicle, wash hand basin, w.c, double glazed windows to the side and rear, heated towel rail and extractor fan.

## Bedroom Three 3.52m x 2.77m – maximum measurements

Double glazed window to the rear and radiator.

## Bedroom Two 4.53m x 3.17m – maximum measurements

Two double glazed windows to the front and radiator.

## Second Floor

**Bedroom One/Loft Room** 4.27m x 4.52m – maximum measurements with restricted head height

Built-in wardrobe, radiator and double glazed window to the rear.

## Rear Garden

To the rear there is a decked seating area with gravel pathways, plum slate beds, AstroTurf and wooden shed.

## Key Features

- Well Presented
- Terrace
- Close to the Town Centre
- Three Bedrooms
- Rear Garden

## Contact Us

### Towers Wills Estate Agents - Yeovil

114, Hendford Hill

Yeovil

Somerset

BA202RF

T: 01935 577032

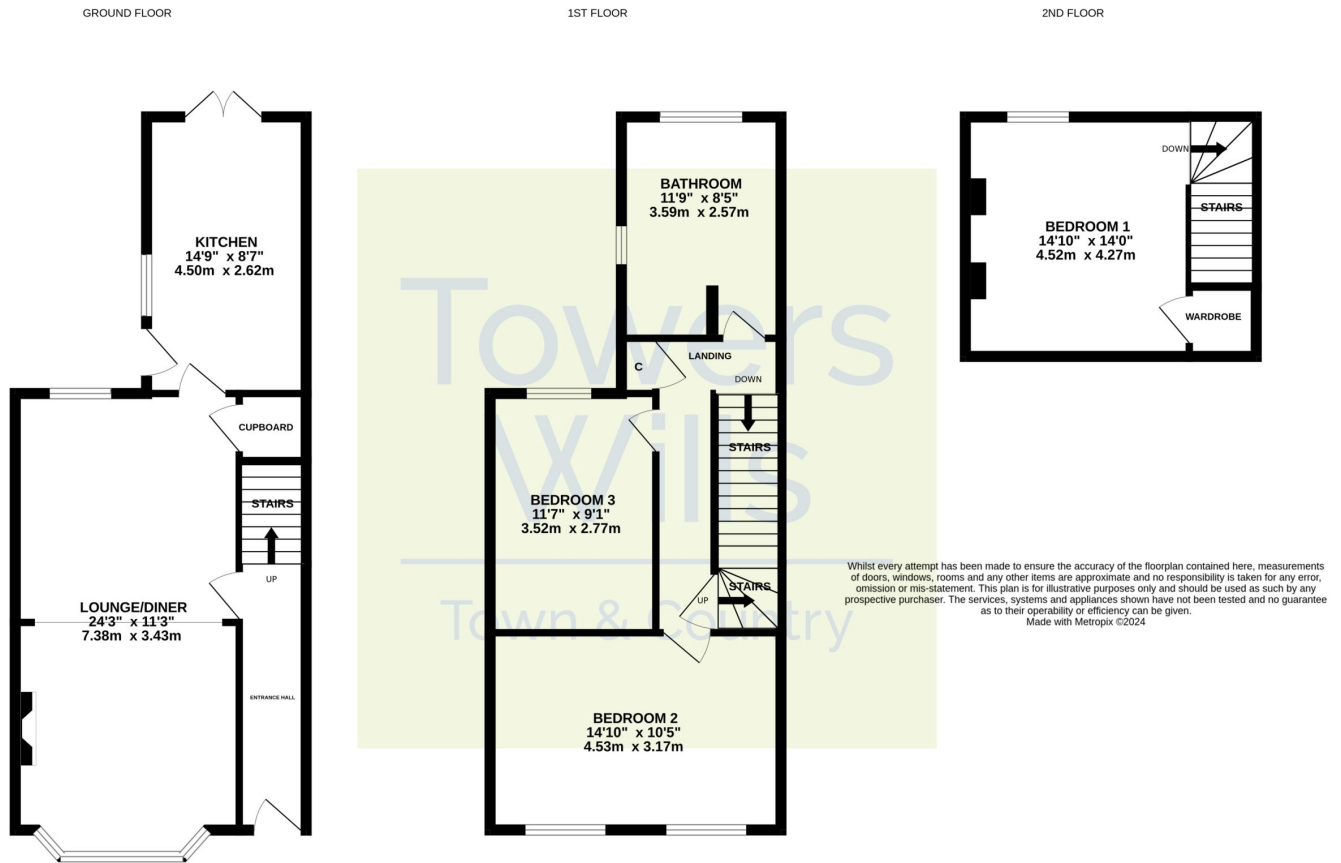
E: [info@towerswills.co.uk](mailto:info@towerswills.co.uk)







# Floor Plan



Please Note No tests have been undertaken of any of the services and any intending purchasers should satisfy themselves in this regard. Towers Wills Ltd for themselves and for the vendor of this property whose agents they are, give notice that, (i) these particulars do not constitute any part of an offer or contract, (ii) all statements contained within these particulars are made without responsibility on the part of Towers Wills or the vendor, (iii) whilst made in good faith, none of the statements contained within these particulars are to be relied upon as a statement of representation or fact, (iv) any intending purchaser must satisfy him/herself by inspection or otherwise as to the correctness of each of the statements contained within these particulars, (v) the vendor does not make or give either Towers Wills or any person in their employment any authority to make or give representation or warranty whatsoever in relation to this property.

Photographs / Floor Plans Photographs are reproduced for general information and it must not be inferred that any item is included for sale with this property. Please note floor plans are not to scale and are for identification purposes only. The photographs used in these particulars may have been taken with the use of a wide angle lens. If you have any queries as to the size of the accommodation or plot, please address these with the agent prior to making an appointment to view

**Towers Wills**

The White House, 114 Hendford Hill, Yeovil BA20 2RF

Yeovil 01935 577032 / South Petherton 01460 298530

[info@towerswills.co.uk](mailto:info@towerswills.co.uk) | [www.towerswills.co.uk](http://www.towerswills.co.uk)