

Towers Wills

Town & Country

📞 01935 577 032 | 01460 298 530 | ✉ info@towerswills.co.uk



82, Shrewsbury Road, Yeovil, Somerset BA21 3UZ

£150,000

Towers Wills welcome to the market this immaculately presented, top floor apartment, where viewing is strongly advised to fully appreciate what this beautiful home has to offer. The property would make an excellent first time buy/buy to let investment and briefly comprises; reception hallway, lounge/diner, kitchen, two double bedrooms, en-suite, bathroom and allocated parking.

Description

Towers Wills welcome to the market this immaculately presented, top floor apartment, where viewing is strongly advised to fully appreciate what this beautiful home has to offer. The property would make an excellent first time buy/buy to let investment and briefly comprises; reception hallway, lounge/diner, kitchen, two double bedrooms, en-suite, bathroom and allocated parking.

Communal Entrance

Stairs rise to the first and second floor.

Reception Hallway

Door to the front, two storage cupboards and loft access.

Lounge/Dining Area

A spacious dual aspect area with windows to both the front and side, two radiators and recess spotlight lighting.

Kitchen

A well presented kitchen comprising of a range of wall, base and drawer units, work surfacing with inset stainless steel sink/drain, integrated electric oven, integrated electric hob with cookerhood over, space for fridge/freezer, plumbing for washing machine, plumbing for dishwasher, tiling to splash prone areas and window to the side.

Bedroom One

Window to the front, built-in wardrobe, radiator and door to en-suite.

En-suite

Comprising of double shower cubicle, wash hand basin, w.c, heated towel rail, extractor fan and part tiling.

Bedroom Two

Window to the side and radiator.

Bathroom

An immaculately presented suite comprising bath with shower over, wash hand basin, w.c, part tiled and extractor fan.

Parking

There is allocated parking for one vehicle.

Agents Note

We have been advised by the vendor that there are 99 years remaining on the lease and the details as follows:

Service charge: £142.03 per month

Ground rent: £232.46 annually

Key Features

- Ideal First Time Buy/Investment Opportunity
- Immaculately Presented
- Top Floor Apartment
- Two Double Bedrooms
- En-suite
- Allocated Parking

Contact Us

Towers Wills Estate Agents - Yeovil

114, Hendford Hill

Yeovil

Somerset

BA202RF

T: 01935 577032

E: info@towerswills.co.uk

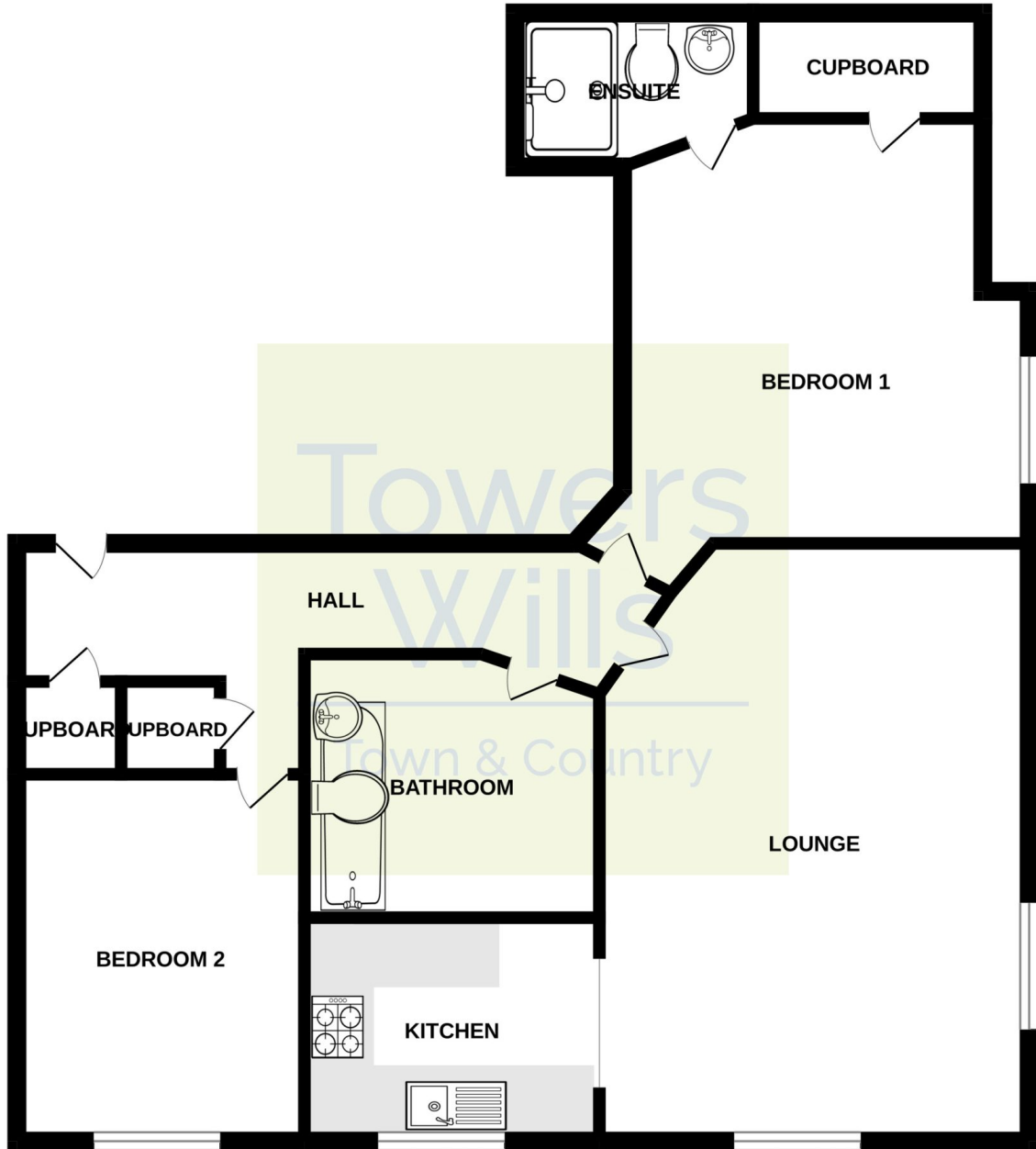
Energy Efficiency

Score	Energy rating	Current	Potential
92+	A		
81-91	B		
69-80	C	76 c	80 c
55-68	D		
39-54	E		
21-38	F		
1-20	G		



Floor Plan

GROUND FLOOR



Whilst every attempt has been made to ensure the accuracy of the floorplan contained here, measurements of doors, windows, rooms and any other items are approximate and no responsibility is taken for any error, omission or mis-statement. This plan is for illustrative purposes only and should be used as such by any prospective purchaser. The services, systems and appliances shown have not been tested and no guarantee as to their operability or efficiency can be given.
Made with Metropix ©2024

Please Note No tests have been undertaken of any of the services and any intending purchasers should satisfy themselves in this regard. Towers Wills Ltd for themselves and for the vendor of this property whose agents they are, give notice that, (i) these particulars do not constitute any part of an offer or contract, (ii) all statements contained within these particulars are made without responsibility on the part of Towers Wills or the vendor, (iii) whilst made in good faith, none of the statements contained within these particulars are to be relied upon as a statement of representation or fact, (iv) any intending purchaser must satisfy him/herself by inspection or otherwise as to the correctness of each of the statements contained within these particulars, (v) the vendor does not make or give either Towers Wills or any person in their employment any authority to make or give representation or warranty whatsoever in relation to this property.

Photographs / Floor Plans Photographs are reproduced for general information and it must not be inferred that any item is included for sale with this property. Please note floor plans are not to scale and are for identification purposes only. The photographs used in these particulars may have been taken with the use of a wide angle lens. If you have any queries as to the size of the accommodation or plot, please address these with the agent prior to making an appointment to view

Towers Wills

The White House, 114 Hendford Hill, Yeovil BA20 2RF

Yeovil 01935 577032 / South Petherton 01460 298530

info@towerswills.co.uk | www.towerswills.co.uk