

Towers Wills

Town & Country

📞 01935 577 032 | 01460 298 530 | ✉ info@towerswills.co.uk



42, The Toose, Yeovil, Somerset BA21 3SN

£215,000

Towers Wills welcome to market this well-presented home situated on the popular Abbey Manor Park. Just a short walk from local amenities, including a local pub, convenience store, primary school and bus routes. The property includes off-road parking, pleasant rear garden, kitchen, good sized lounge/diner, two bedrooms and family bathroom. An ideal first time buy!

Entrance Hall

Double glazed door to the front and under stairs cupboard.

Kitchen 1.85m x 2.90m – maximum measurements

Comprising of a range of wall, base and drawer units, work surfacing with stainless steel one and a half bowl sink drainer, double glazed window to the front, gas boiler, integrated electric hob, integrated oven with extractor over, integrated washing machine, integrated dishwasher, integrated fridge and integrated freezer.

Lounge/Diner 4.53m x 3.65m – maximum measurements

Double glazed patio doors to the rear and radiator.

First Floor Landing

Includes loft hatch.

Bathroom

Suite comprising bath with shower over, wash hand basin, w.c, double glazed window to the rear, heated towel rail and extractor fan.

Bedroom One 3.43m x 2.65m plus recess – maximum measurements

With two double glazed windows to the front, radiator and two built-in wardrobes.

Bedroom Two 2.04m x 3.20m – maximum measurements

Double glazed window to the rear and radiator.

Front Garden

To the front of the property is a lawn area with planted beds and mature shrubs.

Rear Garden

The rear garden is largely laid to lawn with patio area, outside power and wooden shed.

Parking

There is nearby driveway parking for two vehicles in tandem.

Key Features

- Situated on Abbey Manor Park
- Well Presented Throughout
- Two Bedrooms
- Off Road Parking
- Garden
- Ideal First Time Buy/Investment Opportunity

Contact Us

Towers Wills Estate Agents - Yeovil

114, Hendford Hill

Yeovil

Somerset

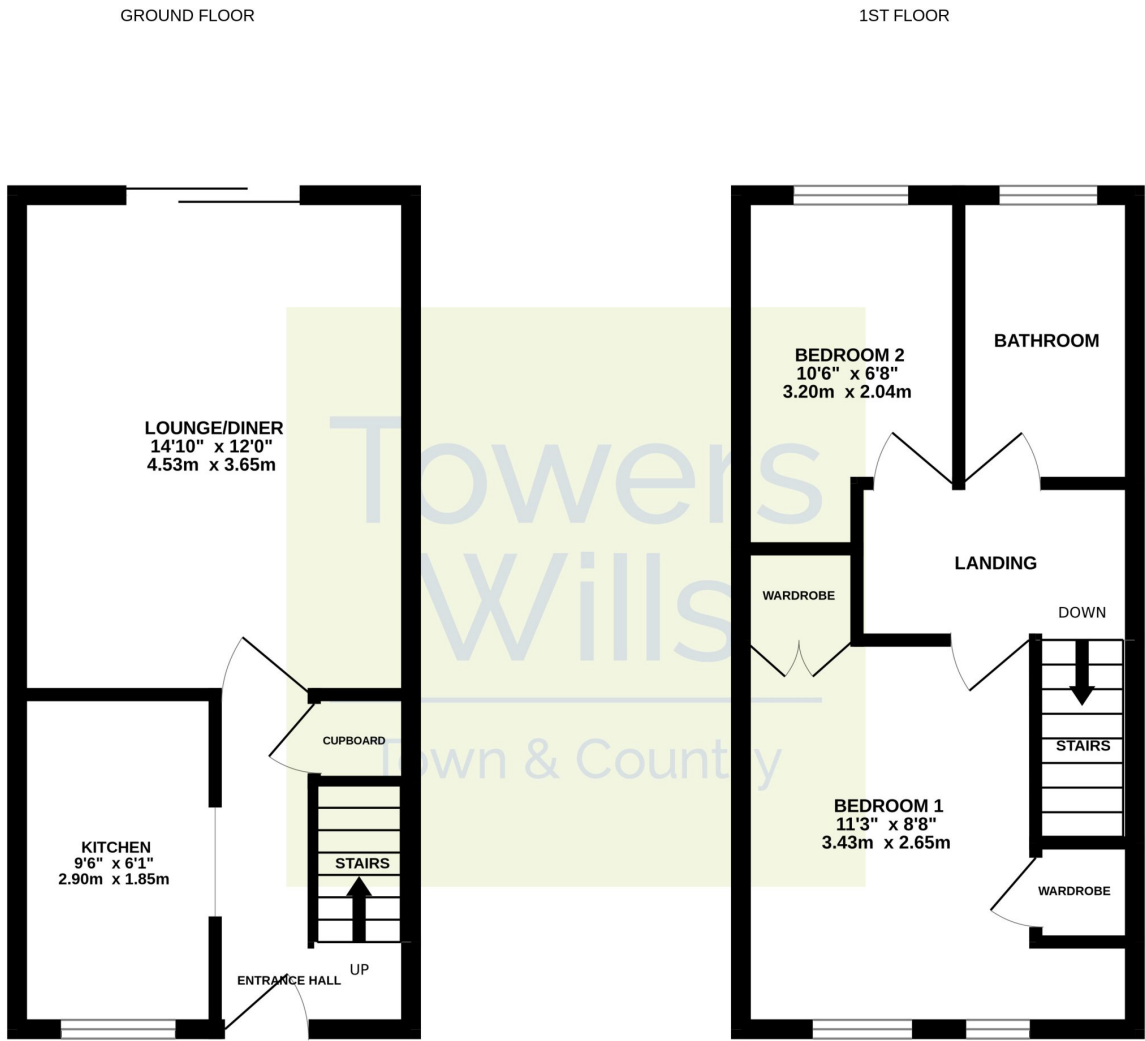
BA202RF

T: 01935 577032

E: info@towerswills.co.uk



Floor Plan



Whilst every attempt has been made to ensure the accuracy of the floorplan contained here, measurements of doors, windows, rooms and any other items are approximate and no responsibility is taken for any error, omission or mis-statement. This plan is for illustrative purposes only and should be used as such by any prospective purchaser. The services, systems and appliances shown have not been tested and no guarantee as to their operability or efficiency can be given.
Made with Metropix ©2024

Please Note No tests have been undertaken of any of the services and any intending purchasers should satisfy themselves in this regard. Towers Wills Ltd for themselves and for the vendor of this property whose agents they are, give notice that, (i) these particulars do not constitute any part of an offer or contract, (ii) all statements contained within these particulars are made without responsibility on the part of Towers Wills or the vendor, (iii) whilst made in good faith, none of the statements contained within these particulars are to be relied upon as a statement of representation or fact, (iv) any intending purchaser must satisfy him/herself by inspection or otherwise as to the correctness of each of the statements contained within these particulars, (v) the vendor does not make or give either Towers Wills or any person in their employment any authority to make or give representation or warranty whatsoever in relation to this property.

Photographs / Floor Plans Photographs are reproduced for general information and it must not be inferred that any item is included for sale with this property. Please note floor plans are not to scale and are for identification purposes only. The photographs used in these particulars may have been taken with the use of a wide angle lens. If you have any queries as to the size of the accommodation or plot, please address these with the agent prior to making an appointment to view

Towers Wills

The White House, 114 Hendford Hill, Yeovil BA20 2RF

Yeovil 01935 577032 / South Petherton 01460 298530

info@towerswills.co.uk | www.towerswills.co.uk