

# Towers Wills

Town & Country

📞 01935 577 032 | 01460 298 530 | ✉ info@towerswills.co.uk



**77, Rustywell Park, Yeovil, Somerset BA20 2NB**

**£150,000**

Towers Wills welcome to the market this over 50's park home, occupying a prime position within this popular development, and briefly comprises; reception hallway, spacious living room, dining room, kitchen, two bedrooms, modern wet room, enclosed gardens to all sides, allocated parking and oil central heated. Offered for sale with vacant possession/no onward chain.

## Reception Hallway

With double glazed door to the side and cloakroom cupboards.

## Living Room

A spacious dual aspect living area with windows to both the front and side and radiator.

## Kitchen

A well presented fitted kitchen comprising of a range of wall, base and drawer units, work surfacing with inset stainless steel sink/drainer, space for electric cooker, space for fridge/freezer, breakfast bar, tiling to splash prone areas, radiator and archway through to the dining room.

## Dining Room

With window to the side and radiator.

## Bedroom One

With window to the rear, built-in wardrobes and radiator.

## Bedroom Two

With window to the rear, fitted wardrobes and radiator.

## Wet Room

A modern suite comprising of walk-in shower, wash hand basin with vanity unit under, w.c, heated towel rail, extractor fan and two windows to the sides.

## Outside

To the rear of the property is a very private and enclosed seating area, being laid to patio and gated side access. The front and side have been laid to stone chip, outside tap and space for washing line etc.

## Parking

There is an allocated parking space in the carpark, with potential for additional parking space if somebody wished to use some of the garden area, to create a parking space.

## Situation

Rustywell Park is a retirement park, restricted to residents over 50 years of age, and is within walking distance of local supermarkets, shops, amenities and bus stop. Ninesprings Country Park is just a short distance away.

## Rustywell Park Rules

<https://irp.cdn-website.com/b4a8e399/files/uploaded/Rusty%20Well%20Park%20Rules%20copy.pdf>

## Key Features

- Park Home
- Well Presented
- Two Bedrooms
- Over 50's
- Gardens
- Allocated Parking

## Contact Us

### Towers Wills Estate Agents - Yeovil

114, Hendford Hill

Yeovil

Somerset

BA202RF

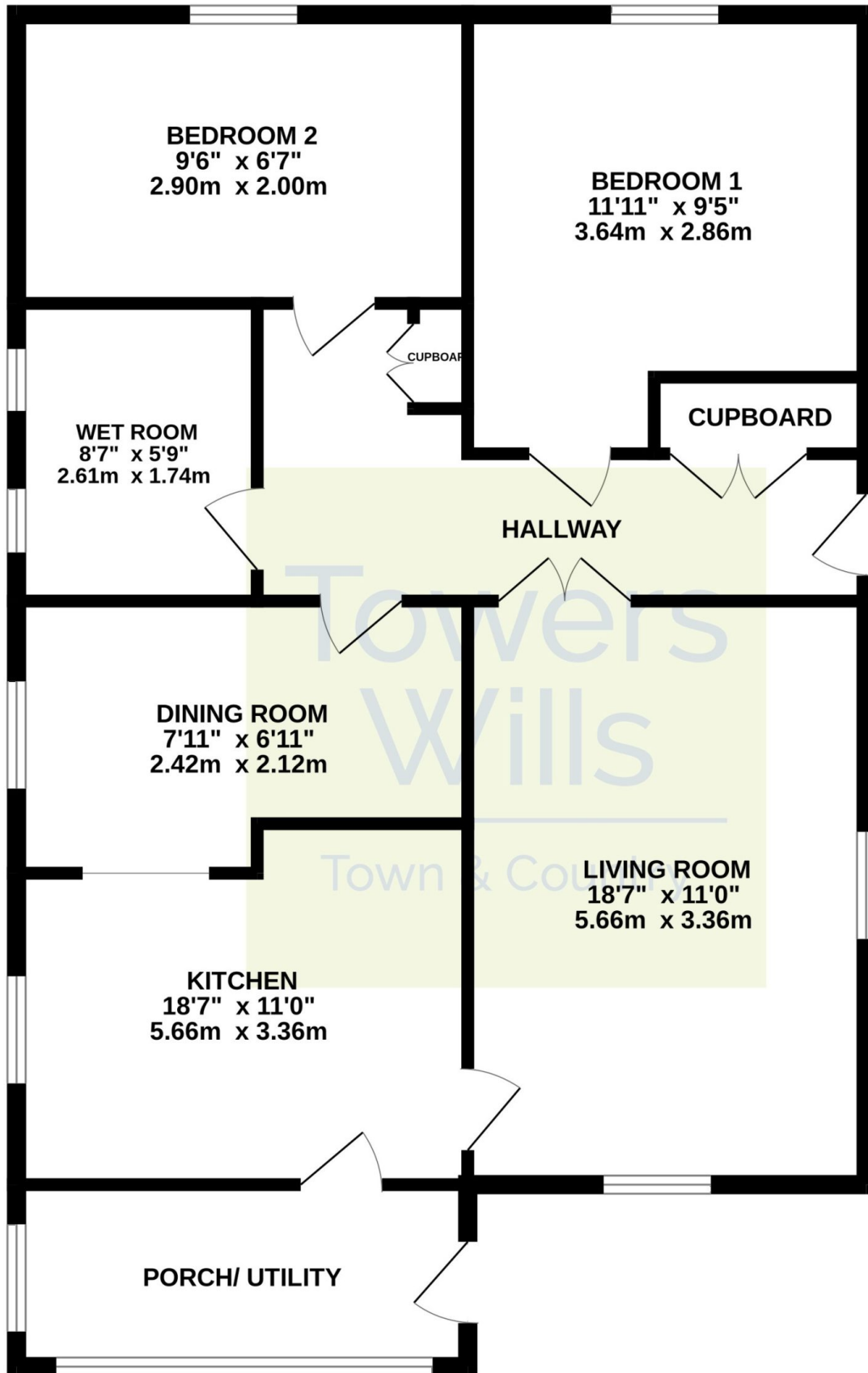
T: 01935 577032

E: [info@towerswills.co.uk](mailto:info@towerswills.co.uk)





# Floor Plan



Whilst every attempt has been made to ensure the accuracy of the floorplan contained here, measurements of doors, windows, rooms and any other items are approximate and no responsibility is taken for any error, omission or mis-statement. This plan is for illustrative purposes only and should be used as such by any prospective purchaser. The services, systems and appliances shown have not been tested and no guarantee as to their operability or efficiency can be given.  
Made with Metropix ©2024



Please Note No tests have been undertaken of any of the services and any intending purchasers should satisfy themselves in this regard. Towers Wills Ltd for themselves and for the vendor of this property whose agents they are, give notice that, (i) these particulars do not constitute any part of an offer or contract, (ii) all statements contained within these particulars are made without responsibility on the part of Towers Wills or the vendor , (iii) whilst made in good faith, none of the statements contained within these particulars are to be relied upon as a statement of representation or fact , (iv) any intending purchaser must satisfy him/herself by inspection or otherwise as to the correctness of each of the statements contained within these particulars, (v) the vendor does not make or give either Towers Wills or any person in their employment any authority to make or give representation or warranty whatsoever in relation to this property.

Photographs / Floor Plans Photographs are reproduced for general information and it must not be inferred that any item is included for sale with this property. Please note floor plans are not to scale and are for identification purposes only. The photographs used in these particulars may have been taken with the use of a wide angle lens. If you have any queries as to the size of the accommodation or plot, please address these with the agent prior to making an appointment to view

**Towers Wills**

The White House, 114 Hendford Hill, Yeovil BA20 2RF

Yeovil 01935 577032 / South Petherton 01460 298530

[info@towerswills.co.uk](mailto:info@towerswills.co.uk) | [www.towerswills.co.uk](http://www.towerswills.co.uk)