

# Towers Wills

Town & Country

📞 01935 577 032 | 01460 298 530 | ✉ info@towerswills.co.uk



1, Vale Road, Yeovil, Somerset BA21 5HN

**£210,000**

Towers Wills are pleased to welcome to market this extremely well presented and spacious three bedroom end terrace property, situated within a popular residential area of Yeovil close to many amenities. The property briefly comprises of; hall, cloakroom, kitchen/diner, lounge, three bedrooms including two double bedrooms, family bathroom, front and rear garden. The property must be viewed to be fully appreciated and is a great opportunity for first time buyers and investors.

### **Entrance Hall**

Double glazed door to the front, door to kitchen/diner, door to lounge and under stairs storage cupboard.

### **Kitchen/Diner** 2.84m x 4.69m

Comprising of a range of wall, base and drawer units, work surfacing with stainless steel sink drainer with mixer tap, integrated oven with four ring electric hob and cookerhood over, integrated dishwasher, integrated washer/dryer, integrated fridge freezer, double glazed window to the front, laminate flooring, radiator and door to hall.

### **Downstairs W.C** 1.35m x 1.52m

With low level w.c, wash hand basin with cupboard under, laminate flooring, radiator and double glazed window to the rear.

### **Lounge** 6.23m x 3.40m

Double glazed window to the front, double glazed window to the rear, laminate floor, radiator and door to hall.

### **First Floor Landing**

With doors to accommodation, airing cupboard housing the boiler and loft access.

### **Bedroom One** 3.45m x 3.77m

Double glazed window to the rear, storage cupboard, built-in wardrobe and radiator.

### **Bedroom Two** 5.51m x 2.91m

Double glazed window to the rear, built-in wardrobes and radiator.

### **Bedroom Three** 2.52m x 2.61m

Double glazed window to the front and radiator.

### **Shower Room** 1.97m x 1.73m

Suite comprising walk-in shower, wash hand basin, part tiled walls, wall mounted heated towel rail and double glazed window to the front.

### **W.C** 1.75m x 0.89m

With low level w.c, radiator and double glazed window to the front.

### **Rear Garden**

To the rear is a low maintenance garden with patio area, area laid to artificial grass, decking area, large shed and gated access to the rear.

## Key Features

- End Terrace
- Well Presented
- Three Bedrooms
- Popular Location
- Gardens

## Contact Us

### **Towers Wills Estate Agents - Yeovil**

114, Hendford Hill

Yeovil

Somerset

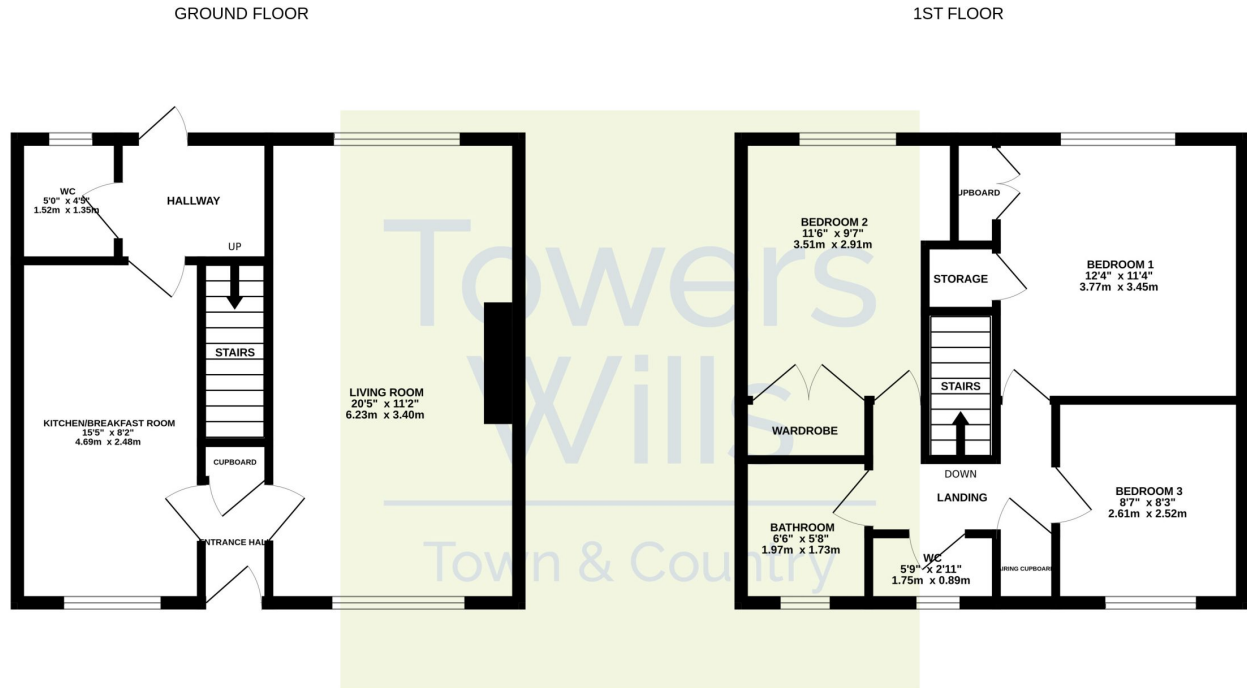
BA202RF

T: 01935 577032

E: [info@towerswills.co.uk](mailto:info@towerswills.co.uk)



# Floor Plan



Whilst every attempt has been made to ensure the accuracy of the floorplan contained here, measurements of doors, windows, rooms and any other items are approximate and no responsibility is taken for any error, omission or mis-statement. This plan is for illustrative purposes only and should be used as such by any prospective purchaser. The services, systems and appliances shown have not been tested and no guarantee as to their operability or efficiency can be given.  
Made with Metropix ©2024

Please Note No tests have been undertaken of any of the services and any intending purchasers should satisfy themselves in this regard. Towers Wills Ltd for themselves and for the vendor of this property whose agents they are, give notice that, (i) these particulars do not constitute any part of an offer or contract, (ii) all statements contained within these particulars are made without responsibility on the part of Towers Wills or the vendor, (iii) whilst made in good faith, none of the statements contained within these particulars are to be relied upon as a statement of representation or fact, (iv) any intending purchaser must satisfy him/herself by inspection or otherwise as to the correctness of each of the statements contained within these particulars, (v) the vendor does not make or give either Towers Wills or any person in their employment any authority to make or give representation or warranty whatsoever in relation to this property.

Photographs / Floor Plans Photographs are reproduced for general information and it must not be inferred that any item is included for sale with this property. Please note floor plans are not to scale and are for identification purposes only. The photographs used in these particulars may have been taken with the use of a wide angle lens. If you have any queries as to the size of the accommodation or plot, please address these with the agent prior to making an appointment to view