

# Towers Wills

Town & Country

📞 01935 577 032 | 01460 298 530 | ✉ info@towerswills.co.uk



**37, Moorlands Park, Martock, Somerset TA12 6DN**

**£170,000**

Towers Wills are pleased to welcome to the market this two bedroom mid terrace Bungalow within walking distance of amenities in this popular village location. Briefly comprising entrance hall, lounge/bedroom, kitchen, bedroom two, conservatory/lounge, bathroom and low maintenance rear garden.

### Entrance Hall

With Hatch to roof space and radiator.

### Lounge/ Bedroom One

With window outlook to the front, fitted wardrobes, cupboard, TV point, telephone point and radiator.

### Kitchen

Fitted with timber effect doors with a range of wall and base units. A stainless steel sink drainer unit with mixer tap, space for cooker, extractor hood over, plumbing for washing machine, space for fridge/freezer, radiator, boiler and doors leading out to the conservatory.

### Conservatory/Living Room

With double doors leading out to the rear and benefits from a further storage area.

### Bedroom Two

With window outlook to the rear and radiator.

### Family Bathroom

A white suite with panel bath, mixer tap shower attachment, pedestal hand basin with mixer tap, WC, part tiled walls, extractor fan and window with outlook to the front.

### Garden

To the front there is low maintenance gravel area. To the rear the garden is also low maintenance with patio area, shed, gate to the rear and is enclosed by lap panel fencing.

### Agent Note

The current homeowners are using the conservatory as the living room and the lounge as a bedroom. There is potential for one of the bedrooms to be used as a lounge.

## Key Features

- Mid Terrace Bungalow
- Two Bedroom
- Walking distance to amenities
- Desirable Village Location
- Garage

## Contact Us

### Towers Wills Estate Agents - Yeovil

114, Hendford Hill  
Yeovil

Somerset

BA202RF

T: 01935 577032

E: [info@towerswills.co.uk](mailto:info@towerswills.co.uk)

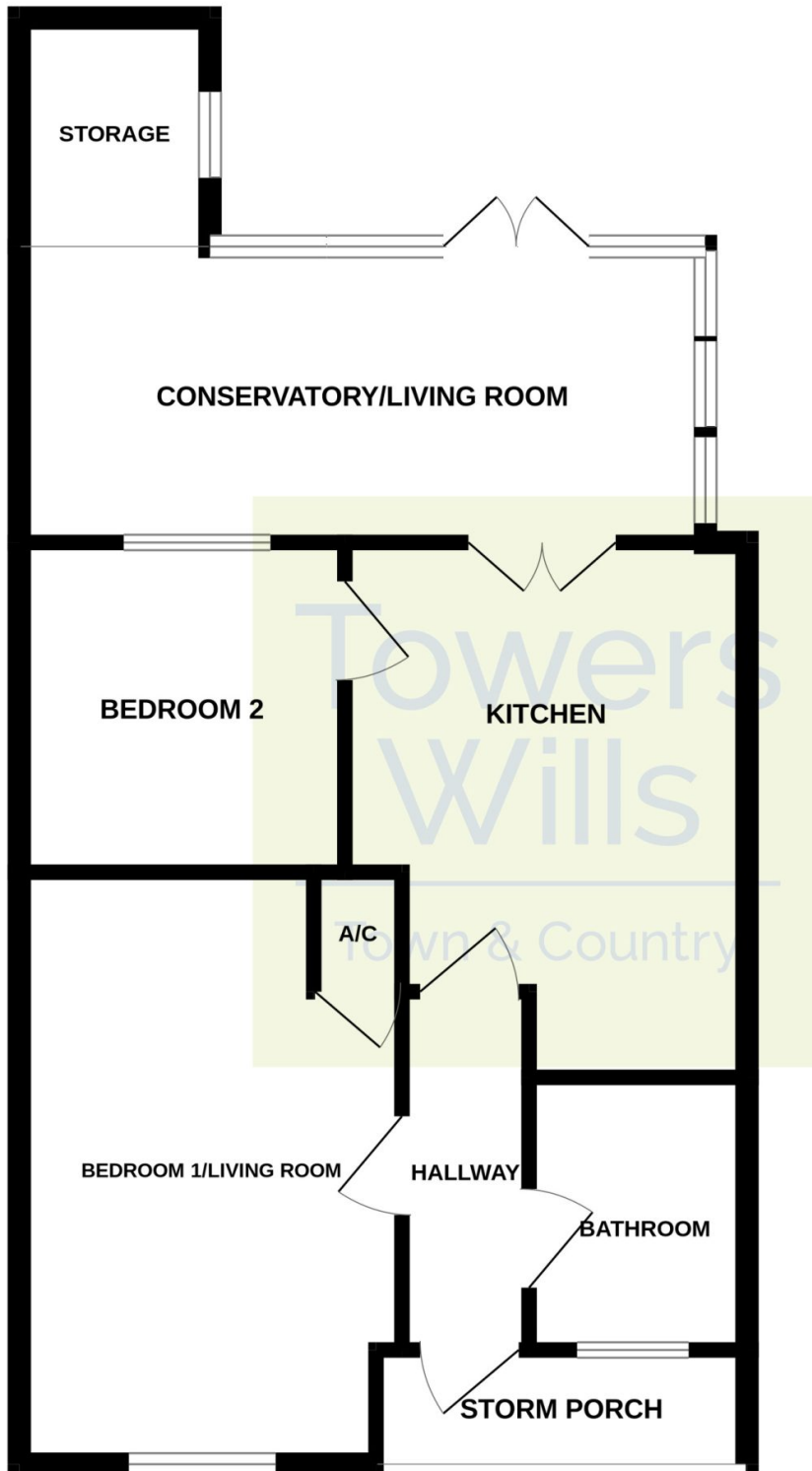
## Energy Efficiency

Score	Energy rating	Current	Potential
92+	A		93 A
81-91	B		
69-80	C	73 C	
55-68	D		
39-54	E		
21-38	F		
1-20	G		



# Floor Plan

GROUND FLOOR



Whilst every attempt has been made to ensure the accuracy of the floorplan contained here, measurements of doors, windows, rooms and any other items are approximate and no responsibility is taken for any error, omission or mis-statement. This plan is for illustrative purposes only and should be used as such by any prospective purchaser. The services, systems and appliances shown have not been tested and no guarantee as to their operability or efficiency can be given.  
Made with Metropix ©2024

Please Note No tests have been undertaken of any of the services and any intending purchasers should satisfy themselves in this regard. Towers Wills Ltd for themselves and for the vendor of this property whose agents they are, give notice that, (i) these particulars do not constitute any part of an offer or contract, (ii) all statements contained within these particulars are made without responsibility on the part of Towers Wills or the vendor, (iii) whilst made in good faith, none of the statements contained within these particulars are to be relied upon as a statement of representation or fact, (iv) any intending purchaser must satisfy him/herself by inspection or otherwise as to the correctness of each of the statements contained within these particulars, (v) the vendor does not make or give either Towers Wills or any person in their employment any authority to make or give representation or warranty whatsoever in relation to this property.

Photographs / Floor Plans Photographs are reproduced for general information and it must not be inferred that any item is included for sale with this property. Please note floor plans are not to scale and are for identification purposes only. The photographs used in these particulars may have been taken with the use of a wide angle lens. If you have any queries as to the size of the accommodation or plot, please address these with the agent prior to making an appointment to view

**Towers Wills**

The White House, 114 Hendford Hill, Yeovil BA20 2RF

Yeovil 01935 577032 / South Petherton 01460 298530

[info@towerswills.co.uk](mailto:info@towerswills.co.uk) | [www.towerswills.co.uk](http://www.towerswills.co.uk)