

# Towers Wills

Town & Country

📞 01935 577 032 | 01460 298 530 | ✉ info@towerswills.co.uk



**28, St John's Road, Yeovil, Somerset BA21 5NG**

**Guide Price £260,000**

Towers Wills are pleased to offer to market this extended three bedroom semi detached house. The property briefly comprises; entrance hall, lounge with dining area, kitchen, utility with downstairs w/c, study, three bedrooms, family bathroom rear garden and off road parking. The property is situated within a popular residential area of Yeovil and within close proximity to many local amenities.

## Entrance Hall

Double glazed composite door to front, laminate flooring, double glazed window to side, stairs rising to first floor landing, door to lounge and door to study.

## Lounge 6.84m x 3.06m

Double glazed window to front, multi-fuel burner, coved ceiling and opening to dining area.

## Dining Area 2.75m x 2.86m

Oak flooring, wooden double doors to the garden, radiator and door to kitchen.

## Kitchen 4.06m x 5.29m

Comprising of a range of wall, base and drawer units, wooden work surfacing with sink drainer, double glazed windows to the side and rear, door to the garden, five ring gas hob with cookerhood over, integrated oven, space for dishwasher, space for under counter fridge, gas fired Rayburn and door to utility.

## Utility 2.56m x 2.68m

Double glazed composite door to the front, laminate flooring, Belfast sink with mixer tap, double glazed window to the side, space for washing machine, radiator and door to study.

## Downstairs W.C 0.95m x 1.24m

Double glazed window to the front, w.c, laminate flooring and radiator.

## Study 3.28m x 2.35m

Door to entrance hall, door to utility, laminate flooring, under stairs storage, space for washing machine and tumble dryer.

## First Floor Landing

Double glazed window to the side and loft access.

## Bedroom One 3.78m x 3.64m

Double glazed window to the front, storage cupboard and immersion tank.

## Bedroom Two 2.97m x 3.64m

Double glazed window to the rear and radiator.

## Bedroom Three 2.69m x 2.56m

Double glazed window to the front and radiator.

## Family Bathroom 1.66m x 2.24m

Suite comprising white panel bath with power shower over, wash hand basin, w.c, double glazed window to the rear, tiled walls, tiled flooring, wall mounted heated towel rail, double glazed window to the side, wall cabinet and under floor heating (timer control on the landing).

## Rear Garden

The garden is mainly laid to lawn with patio area, space for shed and side

## Key Features

- Extended
- Three Bedrooms
- Semi-Detached
- Situated in a Popular Residential Area
- Close to Local Amenities

## Contact Us

### Towers Wills Estate Agents - Yeovil

114, Hendford Hill

Yeovil

Somerset

BA202RF

T: 01935 577032

E: [info@towerswills.co.uk](mailto:info@towerswills.co.uk)

access leading to the front.

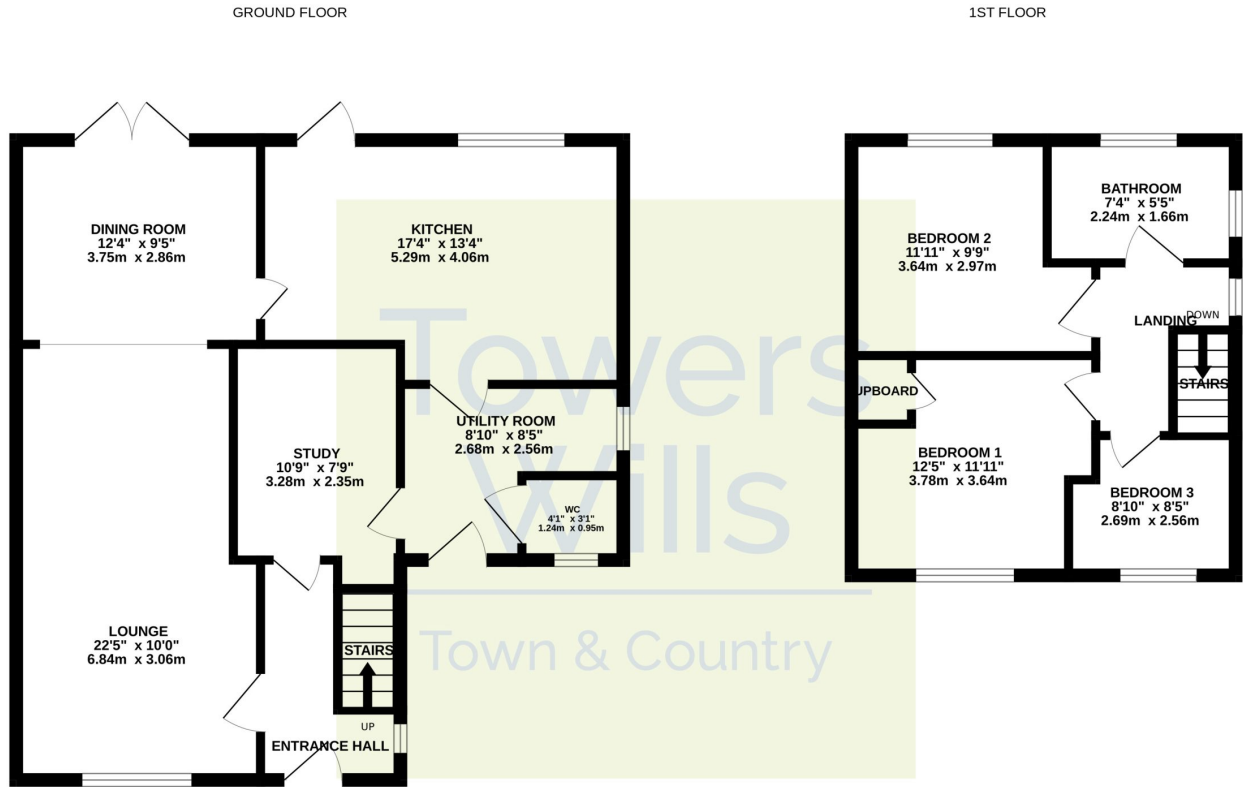
**Off Road Parking**

To the front of the property is off road parking.





# Floor Plan



Whilst every attempt has been made to ensure the accuracy of the floorplan contained here, measurements of doors, windows, rooms and any other items are approximate and no responsibility is taken for any error, omission or mis-statement. This plan is for illustrative purposes only and should be used as such by any prospective purchaser. The services, systems and appliances shown have not been tested and no guarantee as to their operability or efficiency can be given.  
Made with Metropix ©2024

Please Note No tests have been undertaken of any of the services and any intending purchasers should satisfy themselves in this regard. Towers Wills Ltd for themselves and for the vendor of this property whose agents they are, give notice that, (i) these particulars do not constitute any part of an offer or contract, (ii) all statements contained within these particulars are made without responsibility on the part of Towers Wills or the vendor, (iii) whilst made in good faith, none of the statements contained within these particulars are to be relied upon as a statement of representation or fact, (iv) any intending purchaser must satisfy him/herself by inspection or otherwise as to the correctness of each of the statements contained within these particulars, (v) the vendor does not make or give either Towers Wills or any person in their employment any authority to make or give representation or warranty whatsoever in relation to this property.

Photographs / Floor Plans Photographs are reproduced for general information and it must not be inferred that any item is included for sale with this property. Please note floor plans are not to scale and are for identification purposes only. The photographs used in these particulars may have been taken with the use of a wide angle lens. If you have any queries as to the size of the accommodation or plot, please address these with the agent prior to making an appointment to view

**Towers Wills**

The White House, 114 Hendford Hill, Yeovil BA20 2RF

Yeovil 01935 577032 / South Petherton 01460 298530

[info@towerswills.co.uk](mailto:info@towerswills.co.uk) | [www.towerswills.co.uk](http://www.towerswills.co.uk)