

Towers Wills

Town & Country

📞 01935 577 032 | 01460 298 530 | ✉ info@towerswills.co.uk



27, St Mary's Crescent, Yeovil BA21 5RP

Guide Price **£220,000**

Towers Wills are pleased to offer to market this extended three bedroom semi-detached house, set within a popular residential area. The property briefly comprises; entrance hall, lounge, extended kitchen/diner, three bedrooms including two doubles, family bathroom. Enclosed rear garden, garage, off road parking and NO FORWARD CHAIN.

Entrance Hall

Double glazed door to front, stairs to first floor, entrance to lounge and radiator.

Lounge 4.09m x 3.81m

Double glazed window to front, understairs cupboard, radiator and door to kitchen/diner.

Kitchen/Diner 5.95m x 4.82m

A spacious kitchen/diner comprising a mixture of wall, base and draw units, integrated oven with four ring gas hob, stainless steel sink with drainer. Space for washing machine, dish washer and fridge freezer. Two double glazed windows to side, two double glazed windows to rear. Door leading to garden and radiator.

First Floor Landing

Double glazed window to side, doors to all upstairs accommodation and loft access.

Bedroom One 3.87m x 2.71m

Double glazed window to front, storage cupboard, built in wardrobes and radiator.

Bedroom Two 2.54m x 2.68m

Double glazed window to rear and radiator.

Bedroom Three 2.95m x 2.08m

Double glazed window to front and radiator.

Family Bathroom 1.68m x 2.06m

White suite comprising W/C, white panel bath with shower over, wash hand basin, wall mounted heated towel rail, frosted double glazed window to rear and radiator.

Garage 4.83m x 2.77m

With up & over door, power and lighting.

Outside

Benefitting from an enclosed rear garden to the rear with a patio area, steps leading up to a raised lawn area with decking, outside power and outside tap. The property also benefits from off road parking and a garage.

Key Features

- Semi-Detached House
- Three Bedrooms
- Extended
- Garage
- Off Road Parking
- No Forward Chain

Contact Us

Towers Wills Estate Agents - Yeovil

114, Hendford Hill
Yeovil

Somerset
BA202RF

T: 01935 577032

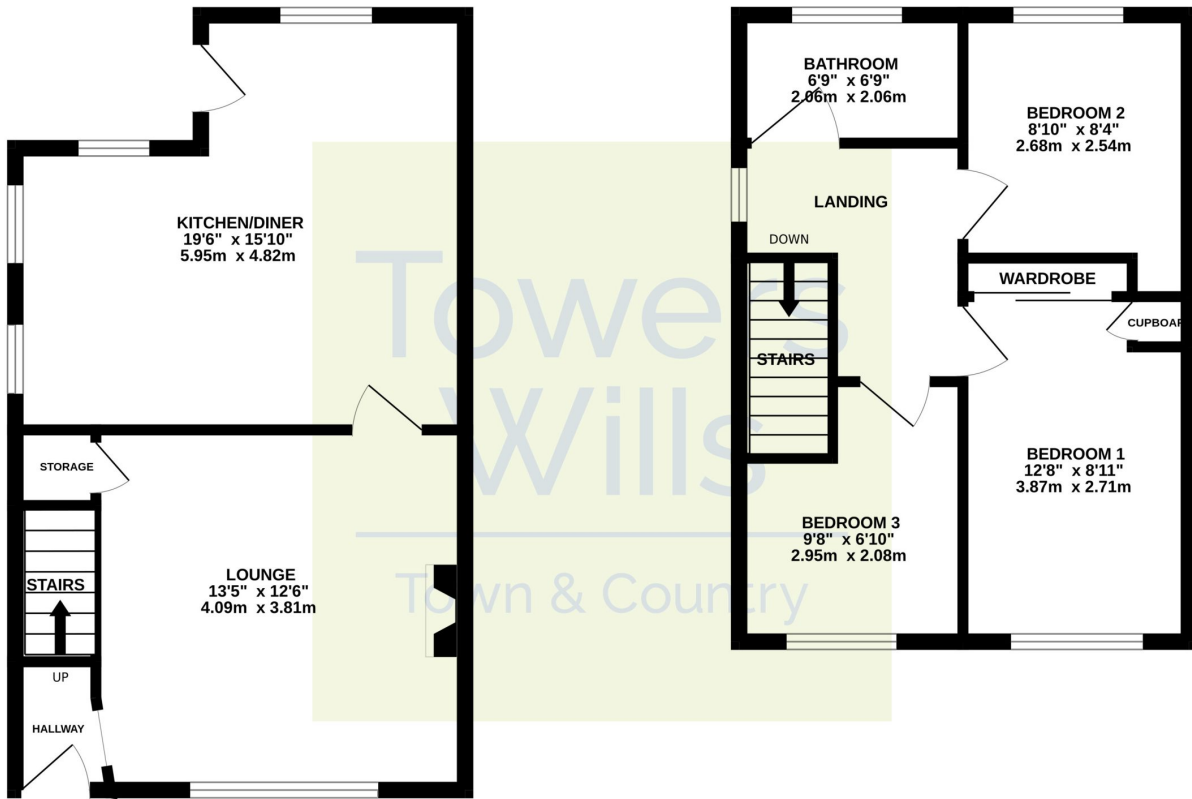
E: info@towerswills.co.uk



Floor Plan

GROUND FLOOR

1ST FLOOR



Whilst every attempt has been made to ensure the accuracy of the floorplan contained here, measurements of doors, windows, rooms and any other items are approximate and no responsibility is taken for any error, omission or mis-statement. This plan is for illustrative purposes only and should be used as such by any prospective purchaser. The services, systems and appliances shown have not been tested and no guarantee as to their operability or efficiency can be given.
Made with Metropix ©2024

Please Note No tests have been undertaken of any of the services and any intending purchasers should satisfy themselves in this regard. Towers Wills Ltd for themselves and for the vendor of this property whose agents they are, give notice that, (i) these particulars do not constitute any part of an offer or contract, (ii) all statements contained within these particulars are made without responsibility on the part of Towers Wills or the vendor, (iii) whilst made in good faith, none of the statements contained within these particulars are to be relied upon as a statement of representation or fact, (iv) any intending purchaser must satisfy him/herself by inspection or otherwise as to the correctness of each of the statements contained within these particulars, (v) the vendor does not make or give either Towers Wills or any person in their employment any authority to make or give representation or warranty whatsoever in relation to this property.

Photographs / Floor Plans Photographs are reproduced for general information and it must not be inferred that any item is included for sale with this property. Please note floor plans are not to scale and are for identification purposes only. The photographs used in these particulars may have been taken with the use of a wide angle lens. If you have any queries as to the size of the accommodation or plot, please address these with the agent prior to making an appointment to view

Towers Wills

The White House, 114 Hendford Hill, Yeovil BA20 2RF

Yeovil 01935 577032 / South Petherton 01460 298530

info@towerswills.co.uk | www.towerswills.co.uk