

Towers Wills

Town & Country

📞 01935 577 032 | 01460 298 530 | ✉ info@towerswills.co.uk



14, Tristram Close, Yeovil, Somerset BA21 3GU

£150,000

Towers Wills are pleased to bring to market this well-presented two bedroom ground floor apartment. The property has been recently redecorated and benefits from new carpets throughout. The apartment comprises; entrance hall kitchen/diner, separate lounge, two double bedrooms with master bedrooms offering an en-suite, family bathroom and allocated parking. Situated in a popular location and is an ideal first home or investment.

Entrance Hall

Including radiator, storage cupboard and intercom.

Kitchen Diner 3.55m x 4.80m

Fitted with a range of wall, base and drawer units, work surfacing with stainless steel one and a half bowl sink drainer units, space for washing machine, space for dishwasher, fridge freezer, integrated gas hob and integrated gas oven with cooker hood over, two double glazed windows to the rear, radiator, central heating boiler and space for dining table.

Bathroom 2.27m x 1.76m

White bathroom suite comprising bath with mixer tap shower over, w.c, wash hand basin, laminate flooring, extractor fan and radiator.

Lounge 6.21m x 4.79m – irregular shape

Double glazed window to the rear, two radiators and storage cupboard.

Bedroom One 4.33m x 3.85m – maximum measurements

Double glazed window to the front, radiator, double built-in wardrobe and door to en-suite.

En-suite 2.30m x 1.21m

Suite comprising double shower cubicle, w.c, wash hand basin, radiator and extractor fan.

Bedroom Two 3.37m x 3.62m – maximum measurements

Double glazed windows to the rear and side and radiator.

Parking

There is one allocated parking space.

Agents Note

We have made aware by the current owner of the following lease information:

Maintenance charge £85 per month

Lease length - TBC

Key Features

- TWO DOUBLE BEDROOMS
- En-suite to master bedroom
- Spacious apartment
- Parking
- Well presented throughout

Contact Us

Towers Wills Estate Agents - Yeovil

114, Hendford Hill
Yeovil

Somerset
BA202RF

T: 01935 577032

E: info@towerswills.co.uk

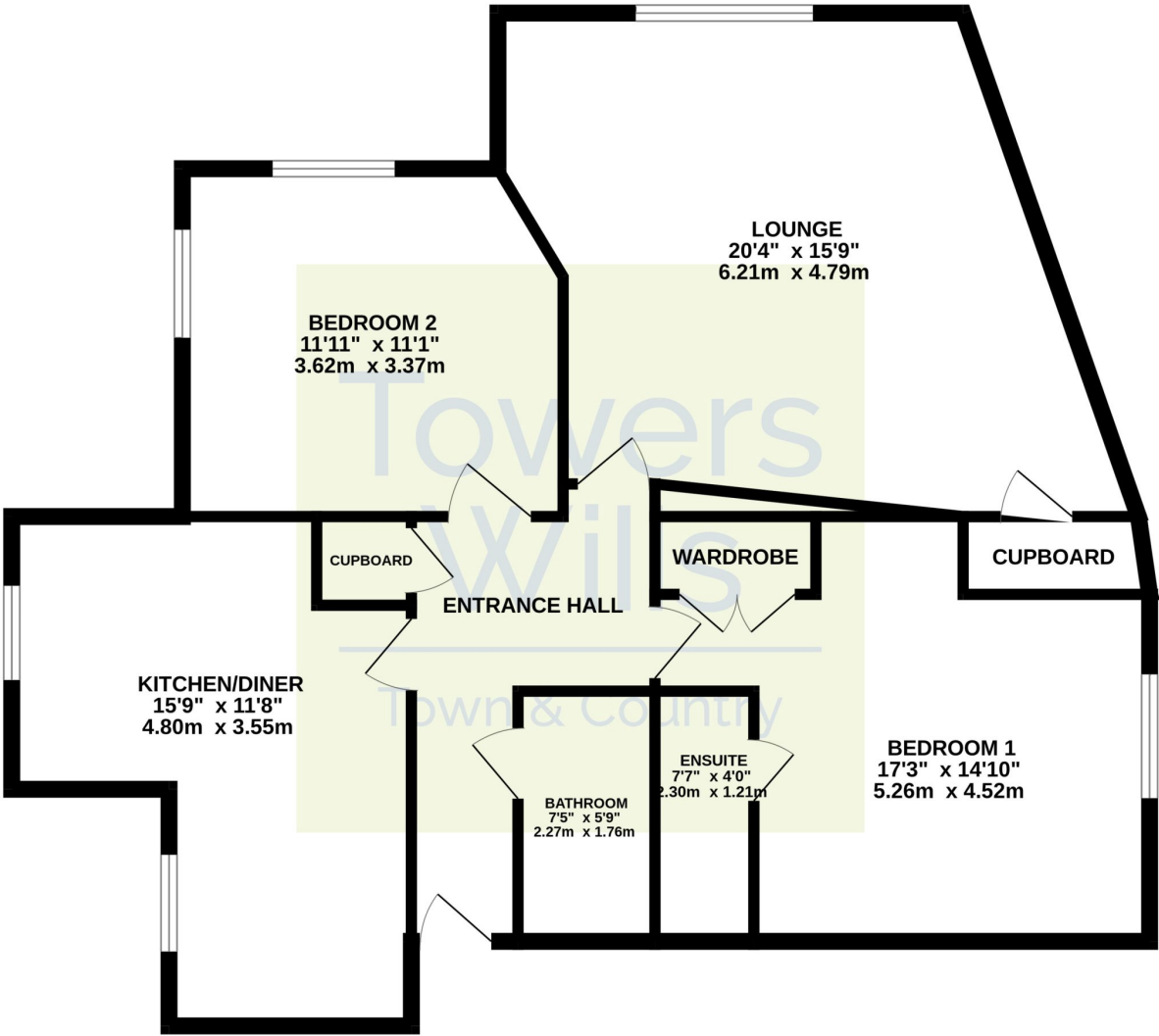
Energy Efficiency

Score	Energy rating	Current	Potential
92+	A		
81-91	B		
69-80	C	78 c	79 c
55-68	D		
39-54	E		
21-38	F		
1-20	G		



Floor Plan

GROUND FLOOR



Whilst every attempt has been made to ensure the accuracy of the floorplan contained here, measurements of doors, windows, rooms and any other items are approximate and no responsibility is taken for any error, omission or mis-statement. This plan is for illustrative purposes only and should be used as such by any prospective purchaser. The services, systems and appliances shown have not been tested and no guarantee as to their operability or efficiency can be given.
Made with Metropix ©2024

Please Note No tests have been undertaken of any of the services and any intending purchasers should satisfy themselves in this regard. Towers Wills Ltd for themselves and for the vendor of this property whose agents they are, give notice that, (i) these particulars do not constitute any part of an offer or contract, (ii) all statements contained within these particulars are made without responsibility on the part of Towers Wills or the vendor, (iii) whilst made in good faith, none of the statements contained within these particulars are to be relied upon as a statement of representation or fact, (iv) any intending purchaser must satisfy him/herself by inspection or otherwise as to the correctness of each of the statements contained within these particulars, (v) the vendor does not make or give either Towers Wills or any person in their employment any authority to make or give representation or warranty whatsoever in relation to this property.

Photographs / Floor Plans Photographs are reproduced for general information and it must not be inferred that any item is included for sale with this property. Please note floor plans are not to scale and are for identification purposes only. The photographs used in these particulars may have been taken with the use of a wide angle lens. If you have any queries as to the size of the accommodation or plot, please address these with the agent prior to making an appointment to view