

Towers Wills

Town & Country

📞 01935 577 032 | 01460 298 530 | ✉ info@towerswills.co.uk



17, Kenmore Drive, Yeovil, Somerset BA21 4BG

£270,000

Towers Wills are pleased to welcome to market this extended two double bedroom semi-detached bungalow situated in a popular residential area, close to Yeovil Hospital and approximately 1 mile from the town centre. The property briefly comprises of; entrance hall, two double bedrooms, lounge, kitchen/diner, conservatory, low maintenance private garden, garage and off road parking. The property has new carpets throughout and includes a fridge freezer and washing machine (both brand-new in 2025).

Entrance Hallway

Double glazed door to front, doors to all accommodation, loft access and radiator.

Lounge 4.45m x 3.66m

Double glazed window to front, radiator and coving.

Kitchen/Diner 3.30m x 3.18m

The kitchen is well fitted and comprises; a mixture of wall, base and draw units, single drainer stainless steel sink unit with mixer taps over, integrated oven with four ring electric hob and cooker hood over, space fridge freezer and washing machine, storage cupboard, double glazed window to front and side, door leading to conservatory, tiled floor and radiator.

Conservatory 6.15m x 2.90m

Double glazing sliding door to rear, double glazed single door to rear, power, tiled flooring and radiator.

Bedroom One 4.14m x 3.23m

Double glazed window to rear, built in cupboard housing combination boiler, built in storage cupboard, coving and radiator.

Bedroom Two 4.09m x 2.79m

Double glazed bay window to front, built in wardrobe, new carpet, coving and radiator.

Bathroom

Suite comprising a sit down half bath with shower over, wash hand basin with vanity unit, WC, part tiled walls and wall mounted heated towel rail and two double glazed window to side.

Outside

To the rear you will find a fully enclosed low maintenance rear garden, which is mainly laid to paving with large central flower bed together with raised borders, offering a mixture of mature shrubs. There is a side gate leading to a shared driveway and parking space immediately in front of the garage/workshop.

Garage

With 'up and over' door, power and light. window to rear and uPVC door to garden.

Key Features

- Semi-Detached Bungalow
- Extended
- Well Presented Throughout
- Popular Residential Location
- Two Double Bedrooms
- Garage & Drive

Contact Us

Towers Wills Estate Agents - Yeovil

114, Hendford Hill

Yeovil

Somerset

BA202RF

T: 01935 577032

E: info@towerswills.co.uk

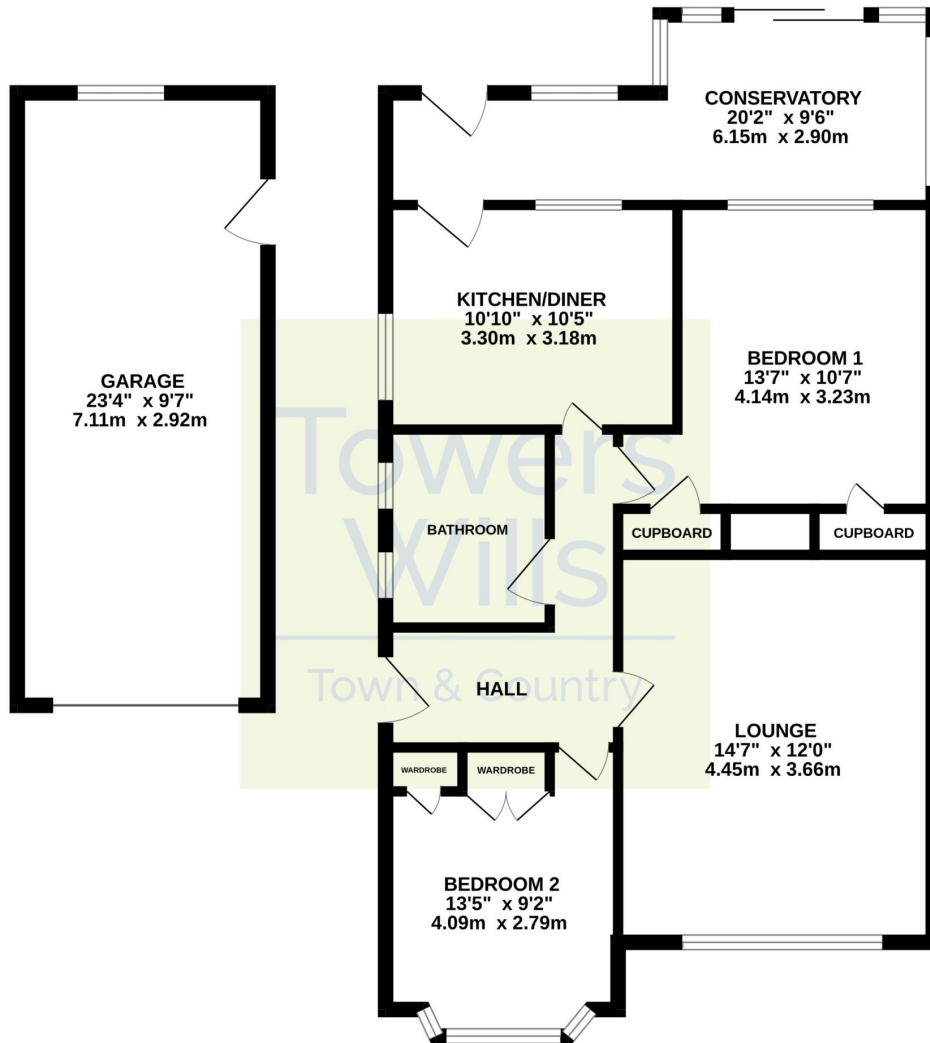
Energy Efficiency

Score	Energy rating	Current	Potential
92+	A		
81-91	B		83 B
69-80	C		
55-68	D	67 D	
39-54	E		
21-38	F		
1-20	G		



Floor Plan

Whilst every attempt has been made to ensure the accuracy of the floorplan contained here, measurements of doors, windows, rooms and any other items are approximate and no responsibility is taken for any error, omission or mis-statement. This plan is for illustrative purposes only and should be used as such by any prospective purchaser. The services, systems and appliances shown have not been tested and no guarantee as to their operability or efficiency can be given.
Made with Metropix ©2024



Please Note No tests have been undertaken of any of the services and any intending purchasers should satisfy themselves in this regard. Towers Wills Ltd for themselves and for the vendor of this property whose agents they are, give notice that, (i) these particulars do not constitute any part of an offer or contract, (ii) all statements contained within these particulars are made without responsibility on the part of Towers Wills or the vendor, (iii) whilst made in good faith, none of the statements contained within these particulars are to be relied upon as a statement of representation or fact, (iv) any intending purchaser must satisfy him/herself by inspection or otherwise as to the correctness of each of the statements contained within these particulars, (v) the vendor does not make or give either Towers Wills or any person in their employment any authority to make or give representation or warranty whatsoever in relation to this property.

Photographs / Floor Plans Photographs are reproduced for general information and it must not be inferred that any item is included for sale with this property. Please note floor plans are not to scale and are for identification purposes only. The photographs used in these particulars may have been taken with the use of a wide angle lens. If you have any queries as to the size of the accommodation or plot, please address these with the agent prior to making an appointment to view

Towers Wills

The White House, 114 Hendford Hill, Yeovil BA20 2RF

Yeovil 01935 577032 / South Petherton 01460 298530

info@towerswills.co.uk | www.towerswills.co.uk