

Towers Wills

Town & Country

📞 01935 577 032 | 01460 298 530 | ✉ info@towerswills.co.uk



13, Love Lane, Ilminster, Somerset TA19 0AR

Offers Over £195,000

Towers Wills are pleased to offer to market, this charming two double bedroom terraced property, situated within easy walking distance of the town centre of Ilminster and benefiting from many local amenities including shops, supermarket, art centre and recreation garden. The property comprises; open plan lounge/diner with fireplace and lift, kitchen, two double bedrooms with potential to make it three, family bathroom and low maintenance outside area. The property also benefits from NO FORWARD CHAIN.

Entrance

Double glazed stable door to front.

Lounge/Diner 5.48 x 6.96

With two double glazed windows to front, double glazed window to rear, two radiators, door leading to kitchen, solid oak flooring, stairs to first floor, understairs cupboard, feature gas fireplace and lift.

Kitchen 1.98 x 3.32

Wall, base and drawer units, stainless steel sink/drainers, freestanding gas oven with four ring gas hob and cooker hood over, tiled walls and floor, x2 double glazed windows to rear, space for washing machine, space for under counter fridge/freezer, radiator and spotlights.

First Floor Landing

Door to first floor accommodation, loft hatch and double-glazed window to rear.

Bedroom One 5.49 x 3.35

Double glazed window to front, double glazed window to rear, radiator, lift access point and potential for third bedroom.

Bedroom Two 2.95 x 3.45

Double glazed window to front and radiator.

Bathroom 2.36 x 2.44

Freestanding shower, wash hand basin with vanity unit, high level W.C, tiled walls, wall-mounted heated towel rail, airing cupboard with boiler and double-glazed window to rear.

Garden

Outside you will find an area mainly laid to hard standing offering a convenient low maintenance garden or off road parking. The area also benefits from side access, space for shed and an outside tap.

Key Features

- Terrace Property
- Two Double Bedrooms
- Low Maintenance Garden
- Popular Town of Ilminster
- NO ONWARD CHAIN

Contact Us

Towers Wills Estate Agents - Yeovil

114, Hendford Hill
Yeovil

Somerset

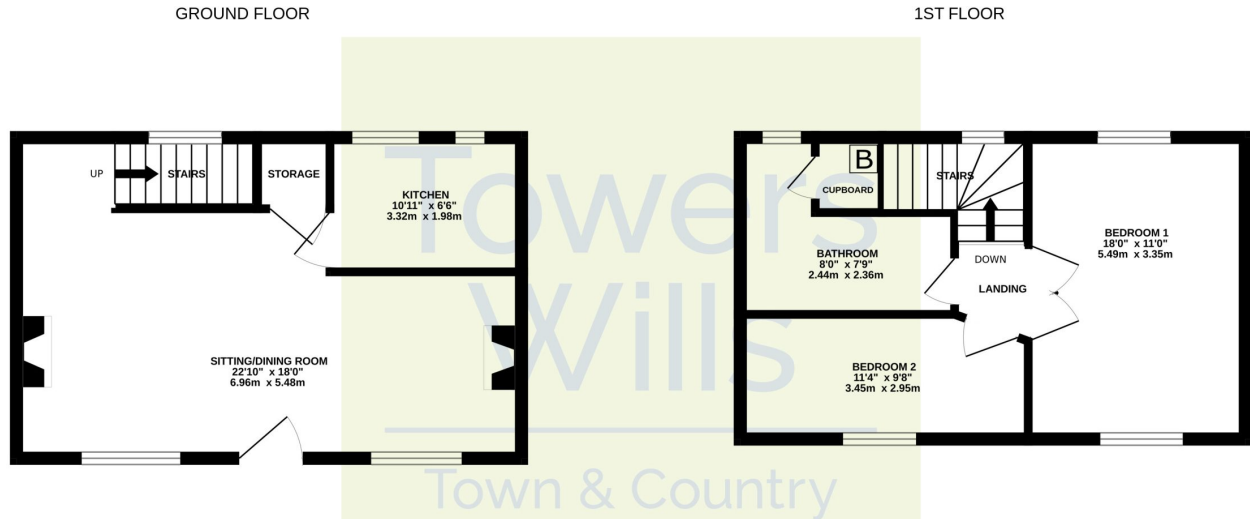
BA202RF

T: 01935 577032

E: info@towerswills.co.uk



Floor Plan



Whilst every attempt has been made to ensure the accuracy of the floorplan contained here, measurements of doors, windows, rooms and any other items are approximate and no responsibility is taken for any error, omission or mis-statement. This plan is for illustrative purposes only and should be used as such by any prospective purchaser. The services, systems and appliances shown have not been tested and no guarantee as to their operability or efficiency can be given.
Made with Metropix ©2024

Please Note No tests have been undertaken of any of the services and any intending purchasers should satisfy themselves in this regard. Towers Wills Ltd for themselves and for the vendor of this property whose agents they are, give notice that, (i) these particulars do not constitute any part of an offer or contract, (ii) all statements contained within these particulars are made without responsibility on the part of Towers Wills or the vendor, (iii) whilst made in good faith, none of the statements contained within these particulars are to be relied upon as a statement of representation or fact, (iv) any intending purchaser must satisfy him/herself by inspection or otherwise as to the correctness of each of the statements contained within these particulars, (v) the vendor does not make or give either Towers Wills or any person in their employment any authority to make or give representation or warranty whatsoever in relation to this property.

Photographs / Floor Plans Photographs are reproduced for general information and it must not be inferred that any item is included for sale with this property. Please note floor plans are not to scale and are for identification purposes only. The photographs used in these particulars may have been taken with the use of a wide angle lens. If you have any queries as to the size of the accommodation or plot, please address these with the agent prior to making an appointment to view

Towers Wills

The White House, 114 Hendford Hill, Yeovil BA20 2RF

Yeovil 01935 577032 / South Petherton 01460 298530

info@towerswills.co.uk | www.towerswills.co.uk