

Towers Wills

Town & Country

📞 01935 577 032 | 01460 298 530 | ✉ info@towerswills.co.uk



45, Cunningham Road, Yeovil, Somerset BA21 5FF **£220,000**

Towers Wills welcome to the market this well presented, two double bedroom end terrace property, situated in a private position within Wyndham Park and briefly comprises; reception hallway, cloakroom, kitchen, lounge/diner, two double bedrooms, en-suite, bathroom, garage, parking and enclosed rear garden with side access.

Entrance Hallway

Double glazed door to the front, radiator, cloakroom and storage cupboard.

Lounge/Diner 5.68m x 3.88m

A spacious open plan living area with double glazed patio doors opening to the rear garden, space for dining table, spotlights, radiator and stairs to the first floor landing.

Kitchen 3.06m x 1.88m

A well presented fitted kitchen comprising of a range of wall, base and drawer units, work surfacing with inset stainless steel sink/drain, integrated electric oven with four ring gas hob, stainless steel splashback and cookerhood over, space for washing machine, space for fridge/freezer, cupboard housing boiler, laminate flooring, spotlights and double glazed window to front.

First Floor Landing

Stairs from the lounge/diner, doors to first floor accommodation and loft access.

Bedroom One 2.86m x 3.87m

Double glazed window to rear, storage cupboard, radiator and door leading to en-suite.

En-suite 2.07m x 1.89m

Comprising of shower cubicle, wash hand basin, W/C, tiling, radiator and extractor fan.

Bedroom Two 2.55m x 3.89m

Double glazed window to the front and radiator.

Bathroom

Suite comprising of white panel bath, wash hand basin, w.c, laminate flooring, radiator and extractor fan.

Rear Garden

To the rear there is an enclosed rear garden with a patio area abutting the house and gated side access.

Garage

There is a garage situated in a block and parking in front for one vehicle.

Key Features

- End of Terrace House
- Popular Wyndham Park Development
- Two Double Bedrooms
- Master En-suite
- Enclosed Garden
- Garage & Parking

Contact Us

Towers Wills Estate Agents - Yeovil

114, Hendford Hill

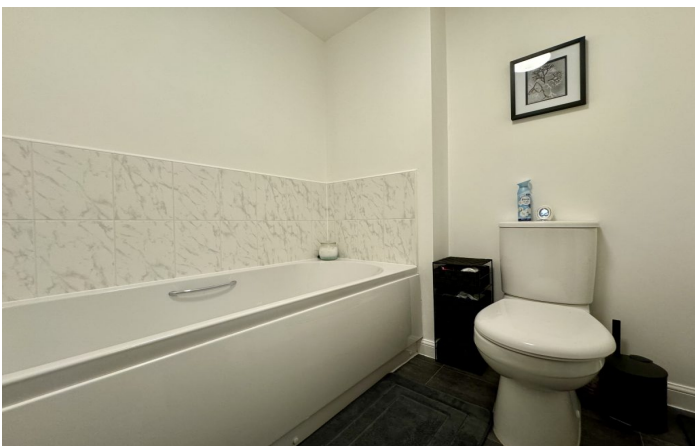
Yeovil

Somerset

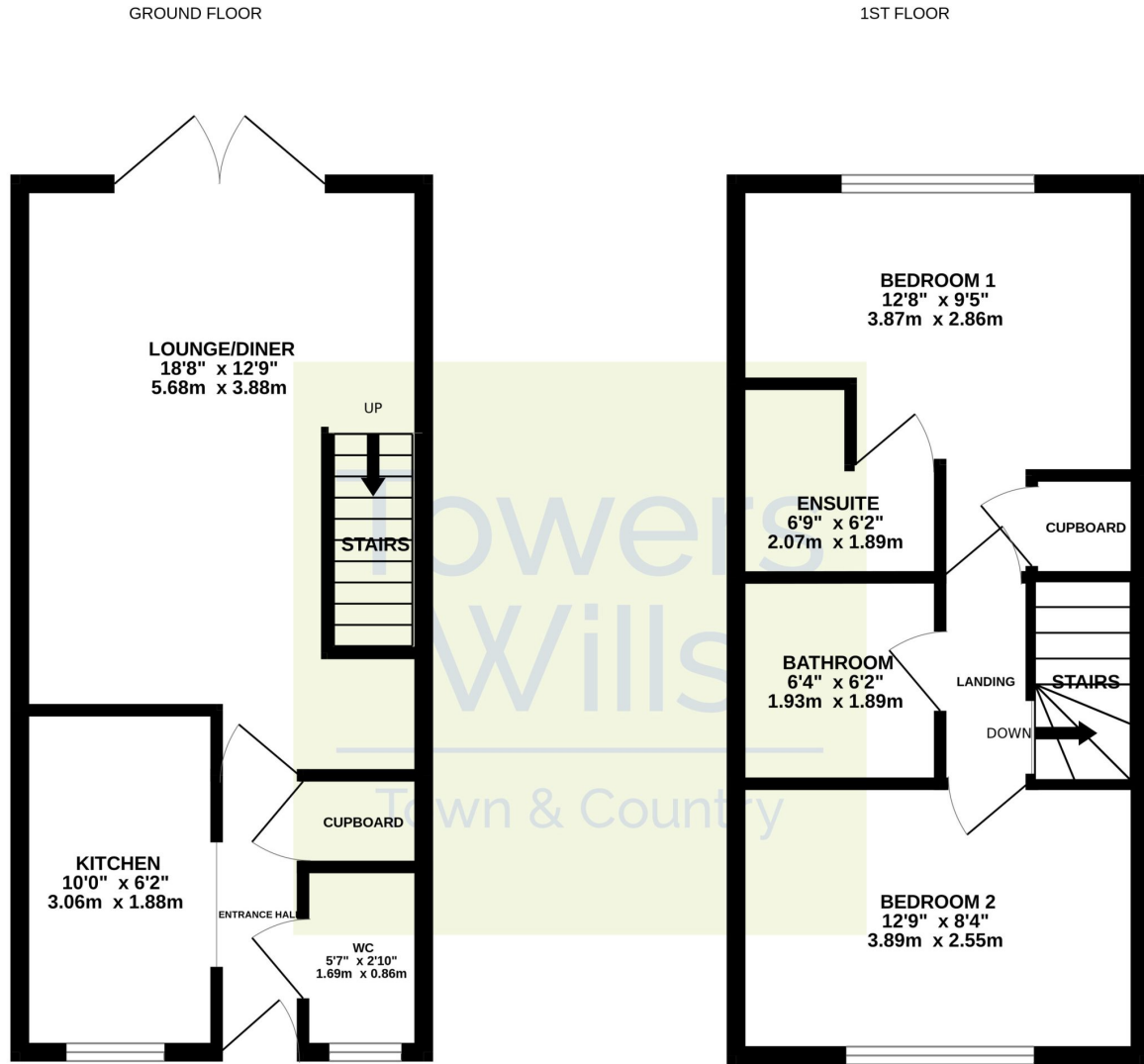
BA202RF

T: 01935 577032

E: info@towerswills.co.uk



Floor Plan



Whilst every attempt has been made to ensure the accuracy of the floorplan contained here, measurements of doors, windows, rooms and any other items are approximate and no responsibility is taken for any error, omission or mis-statement. This plan is for illustrative purposes only and should be used as such by any prospective purchaser. The services, systems and appliances shown have not been tested and no guarantee as to their operability or efficiency can be given.
Made with Metropix ©2025

Please Note No tests have been undertaken of any of the services and any intending purchasers should satisfy themselves in this regard. Towers Wills Ltd for themselves and for the vendor of this property whose agents they are, give notice that, (i) these particulars do not constitute any part of an offer or contract, (ii) all statements contained within these particulars are made without responsibility on the part of Towers Wills or the vendor, (iii) whilst made in good faith, none of the statements contained within these particulars are to be relied upon as a statement of representation or fact, (iv) any intending purchaser must satisfy him/herself by inspection or otherwise as to the correctness of each of the statements contained within these particulars, (v) the vendor does not make or give either Towers Wills or any person in their employment any authority to make or give representation or warranty whatsoever in relation to this property.

Photographs / Floor Plans Photographs are reproduced for general information and it must not be inferred that any item is included for sale with this property. Please note floor plans are not to scale and are for identification purposes only. The photographs used in these particulars may have been taken with the use of a wide angle lens. If you have any queries as to the size of the accommodation or plot, please address these with the agent prior to making an appointment to view

Towers Wills

The White House, 114 Hendford Hill, Yeovil BA20 2RF

Yeovil 01935 577032 / South Petherton 01460 298530

info@towerswills.co.uk | www.towerswills.co.uk