

Towers Wills

Town & Country

📞 01935 577 032 | 01460 298 530 | ✉ info@towerswills.co.uk



8, Beer Street, Yeovil, Somerset BA20 2AF

£200,000

Towers Wills are pleased to welcome to market this well presented, three bedroom end-terrace property comprising; entrance hall, lounge, dining area, newly fitted kitchen, three double bedrooms, family bathroom and enclosed rear garden with side access.

Entrance Hall

Double glazed door to the front, stairs to the first floor, coved ceiling, radiator and access through to lounge/diner.

Lounge 3.89m x 3.71m

Double glazed bay window to the front, stone flooring, feature fireplace, coved ceiling and radiator.

Dining Area 3.78m x 4.29m

Double glazed window to the rear, under stairs cupboard, stone flooring, coved ceiling, space for tumble dryer, radiator and door through to kitchen.

Kitchen 3.55m x 2.65m

A modern fitted kitchen comprising of a range of wall, base and drawer units, work surfacing with stainless steel sink drainer and mixer tap, integrated oven with induction hob and cookerhood over, integrated dishwasher, integrated washing machine, double style fridge/freezer, double glazed window to the side, double glazed patio doors leading to the garden, spotlights and laminate flooring.

First Floor Landing

With loft hatch.

Bedroom One 3.56m x 2.59m

Double glazed window to the side, radiator and coved ceiling.

Bedroom Two 3.82m x 3.12m

Double glazed window to the rear, coved ceiling and radiator.

Bedroom Three

Double glazed bay window to the front, feature fireplace, exposed floorboards, coved ceiling and radiator.

Family Bathroom 2.69m x 1.65m

A modern suite comprising of bath with mixer tap, wash hand basin with vanity unit, w.c, tiled walls, tiled flooring, spotlights, radiator and double glazed window to the front.

Rear Garden

There is an enclosed rear garden which is mainly laid to lawn, offering patio area, area laid to chippings for play facility, outside tap and rear gate offering side access.

Key Features

- Within Walking Distance of Leonards & the Town Centre
- End of Terrace
- Three Double Bedrooms
- Enclosed Garden
- Well Presented Throughout

Contact Us

Towers Wills Estate Agents - Yeovil

114, Hendford Hill

Yeovil

Somerset

BA202RF

T: 01935 577032

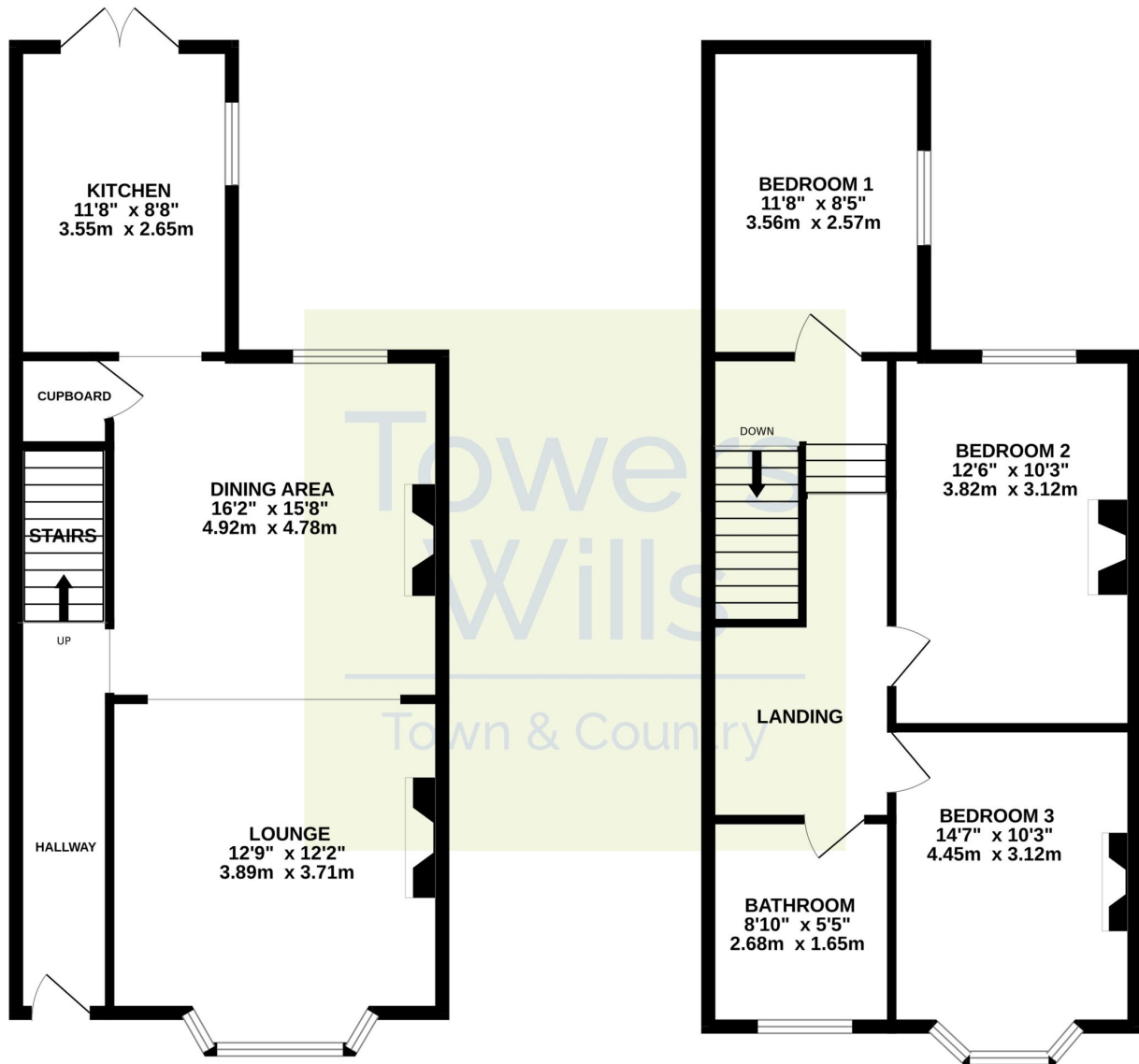
E: info@towerswills.co.uk



Floor Plan

GROUND FLOOR

1ST FLOOR



Whilst every attempt has been made to ensure the accuracy of the floorplan contained here, measurements of doors, windows, rooms and any other items are approximate and no responsibility is taken for any error, omission or mis-statement. This plan is for illustrative purposes only and should be used as such by any prospective purchaser. The services, systems and appliances shown have not been tested and no guarantee as to their operability or efficiency can be given.
Made with Metropix ©2025

Please Note No tests have been undertaken of any of the services and any intending purchasers should satisfy themselves in this regard. Towers Wills Ltd for themselves and for the vendor of this property whose agents they are, give notice that, (i) these particulars do not constitute any part of an offer or contract, (ii) all statements contained within these particulars are made without responsibility on the part of Towers Wills or the vendor, (iii) whilst made in good faith, none of the statements contained within these particulars are to be relied upon as a statement of representation or fact, (iv) any intending purchaser must satisfy him/herself by inspection or otherwise as to the correctness of each of the statements contained within these particulars, (v) the vendor does not make or give either Towers Wills or any person in their employment any authority to make or give representation or warranty whatsoever in relation to this property.

Photographs / Floor Plans Photographs are reproduced for general information and it must not be inferred that any item is included for sale with this property. Please note floor plans are not to scale and are for identification purposes only. The photographs used in these particulars may have been taken with the use of a wide angle lens. If you have any queries as to the size of the accommodation or plot, please address these with the agent prior to making an appointment to view

Towers Wills

The White House, 114 Hendford Hill, Yeovil BA20 2RF

Yeovil 01935 577032 / South Petherton 01460 298530

info@towerswills.co.uk | www.towerswills.co.uk