

# Towers Wills

Town & Country

📞 01935 577 032 | 01460 298 530 | ✉ info@towerswills.co.uk



**46, Glenthorne Avenue, Yeovil, Somerset BA21 4PG**

**Guide Price £290,000**

Towers Wills welcome to the market this immaculately presented semi detached property close to schools, hospital and Town Centre. Briefly comprising hall, lounge, dining room, kitchen, conservatory, three bedrooms, family bathroom, large rear garden, off road parking and garage.

## Entrance door leading into the hall.

### Hall

With stairs to first floor landing, under stairs storage cupboard and radiator.

### Lounge 3.05m x 3.54m

With bay window outlook to the front and leads into the dining room.

### Dining Room 3.16m x 3.27m

With window and door leading out to the rear, modern radiator and is open plan to the kitchen.

### Kitchen 1.98m x 5.13m

A modern kitchen fitted with timber effect worktops and grey doors with a range of wall and base units. A sink drainer unit with mixer tap, Induction hob with oven under, splashback and modern extractor hood over, space for fridge/freezer, integral dishwasher, part tiled walls, radiator and window with outlook to the rear.

### Conservatory 2.13m x 4.33m

With door leading out to the rear and door leading into the garage.

### Landing

With window outlook to the side and hatch to roof space.

### Bedroom One 2.63m x 3.48m

With window outlook to the rear, fitted wardrobes and radiator.

### Bedroom Two 3.09m x 3.53m

With double glazed bay window outlook to the front and radiator.

### Bedroom Three 2.12m x 3.21m

With window outlook to the side, laminate flooring and radiator.

### Bathroom 1.76m x 2.05m

A white modern bathroom fitted with tiled panel bath, shower over and side screen, wash hand basin vanity unit with mixer tap and cupboards under, WC, heated towel rail, tiled floor, under floor heating and window with outlook to the front.

### Garden

A superb size rear garden, being mostly laid to lawn with patio area and is enclosed by lap panel fencing.

### Parking

A block paved drive provides off road parking for several vehicles and in turn leads into the garage.

### Garage

With roller door, power & light, wall mounted boiler and internal door leading to conservatory.

## Key Features

- Semi Detached
- Three bedrooms
- In immaculate condition throughout
- Large rear garden
- Off road parking
- Garage

## Contact Us

### Towers Wills Estate Agents - Yeovil

114, Hendford Hill  
Yeovil

Somerset

BA202RF

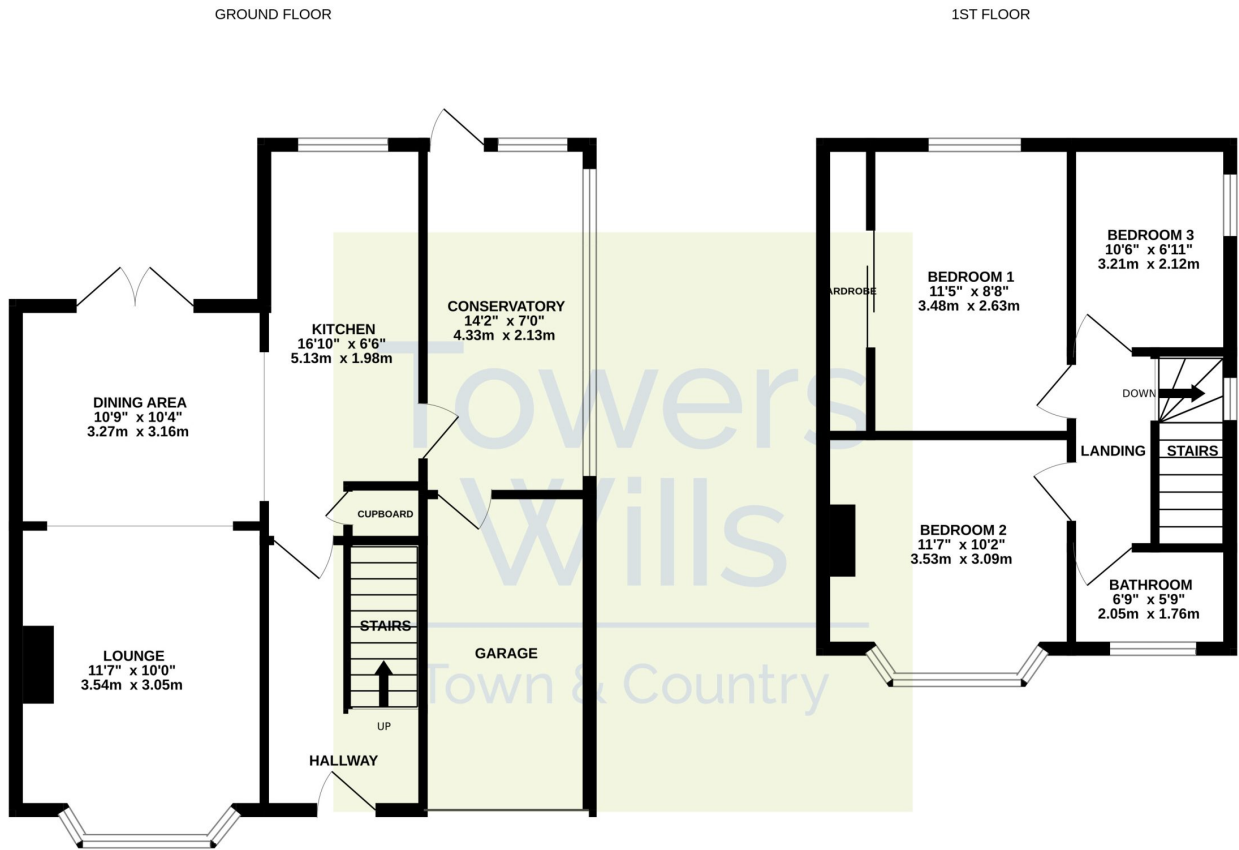
T: 01935 577032

E: [info@towerswills.co.uk](mailto:info@towerswills.co.uk)





# Floor Plan



Whilst every attempt has been made to ensure the accuracy of the floorplan contained here, measurements of doors, windows, rooms and any other items are approximate and no responsibility is taken for any error, omission or mis-statement. This plan is for illustrative purposes only and should be used as such by any prospective purchaser. The services, systems and appliances shown have not been tested and no guarantee as to their operability or efficiency can be given.  
Made with Metropix ©2025

Please Note No tests have been undertaken of any of the services and any intending purchasers should satisfy themselves in this regard. Towers Wills Ltd for themselves and for the vendor of this property whose agents they are, give notice that, (i) these particulars do not constitute any part of an offer or contract, (ii) all statements contained within these particulars are made without responsibility on the part of Towers Wills or the vendor, (iii) whilst made in good faith, none of the statements contained within these particulars are to be relied upon as a statement of representation or fact, (iv) any intending purchaser must satisfy him/herself by inspection or otherwise as to the correctness of each of the statements contained within these particulars, (v) the vendor does not make or give either Towers Wills or any person in their employment any authority to make or give representation or warranty whatsoever in relation to this property.

Photographs / Floor Plans Photographs are reproduced for general information and it must not be inferred that any item is included for sale with this property. Please note floor plans are not to scale and are for identification purposes only. The photographs used in these particulars may have been taken with the use of a wide angle lens. If you have any queries as to the size of the accommodation or plot, please address these with the agent prior to making an appointment to view

**Towers Wills**

The White House, 114 Hendford Hill, Yeovil BA20 2RF

Yeovil 01935 577032 / South Petherton 01460 298530

[info@towerswills.co.uk](mailto:info@towerswills.co.uk) | [www.towerswills.co.uk](http://www.towerswills.co.uk)