

Towers Wills

Town & Country

📞 01935 577 032 | 01460 298 530 | ✉ info@towerswills.co.uk



62, Rowan Way, Yeovil, Somerset BA20 2NR

Offers Over **£250,000**

Towers Wills welcome to the market this well presented, three bedroom semi-detached family home, situated in a sought-after position and within easy reach of local schools, shops, amenities and Leonardo helicopters. The property briefly comprises; reception hallway, living room, kitchen/diner, conservatory, three bedrooms, bathroom, driveway, garage, front and rear gardens.

Reception Hallway

Double glazed door to the front, radiator and under stairs storage cupboard.

Living Room

A spacious family living area with double glazed window to the front and radiator.

Kitchen/Diner

Comprising of a range of wall, base and drawer units, work surfacing with inset stainless steel sink/drainer, space for fridge/freezer, plumbing for washing machine and dishwasher, integrated double electric oven, integrated electric hob with cookerhood over, tiled floor, radiator, two double glazed windows to the rear and door to conservatory.

Conservatory

With pleasant outlook onto the rear garden, sliding door to the side, door opening to the rear garden and radiator.

First Floor Landing

Stairs from reception hallway and loft access.

Bedroom One

Double glazed window to the front and radiator.

Bedroom Two

Double glazed window to the rear, radiator and built-in wardrobes.

Bedroom Three

Double glazed window to the front and radiator.

Bathroom

Suite comprising of bath with shower over, wash hand basin, w.c, tiling, double glazed window to the rear and heated towel rail.

Outside

To the front of the property is a driveway providing ample off road parking for three vehicles, in turn leads to the garage.

Garage

With 'up and over' door, personal door to the garden, power and light.

Gardens

The front garden is laid to lawn, whilst to the rear, the garden is laid to artificial lawn and patio for low maintenance and there is side access.

Agents Note

The current owners have advised a new boiler was installed in February 2025.

Key Features

- Semi Detached
- Sought-after Location
- Three Bedrooms
- Conservatory
- Driveway & Garage
- Priced for Immediate Interest

Contact Us

Towers Wills Estate Agents - Yeovil

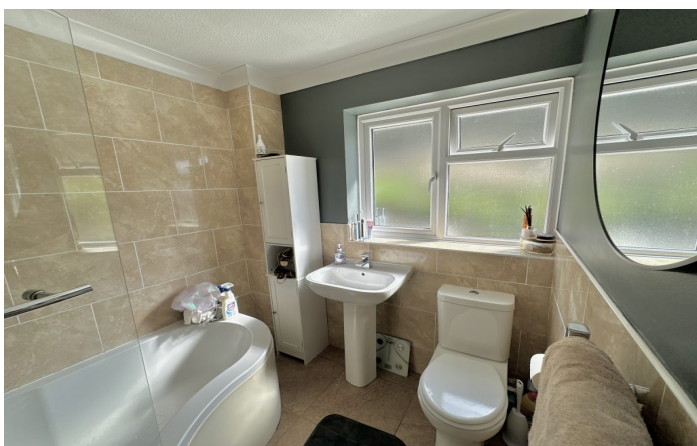
114, Hendford Hill
Yeovil

Somerset

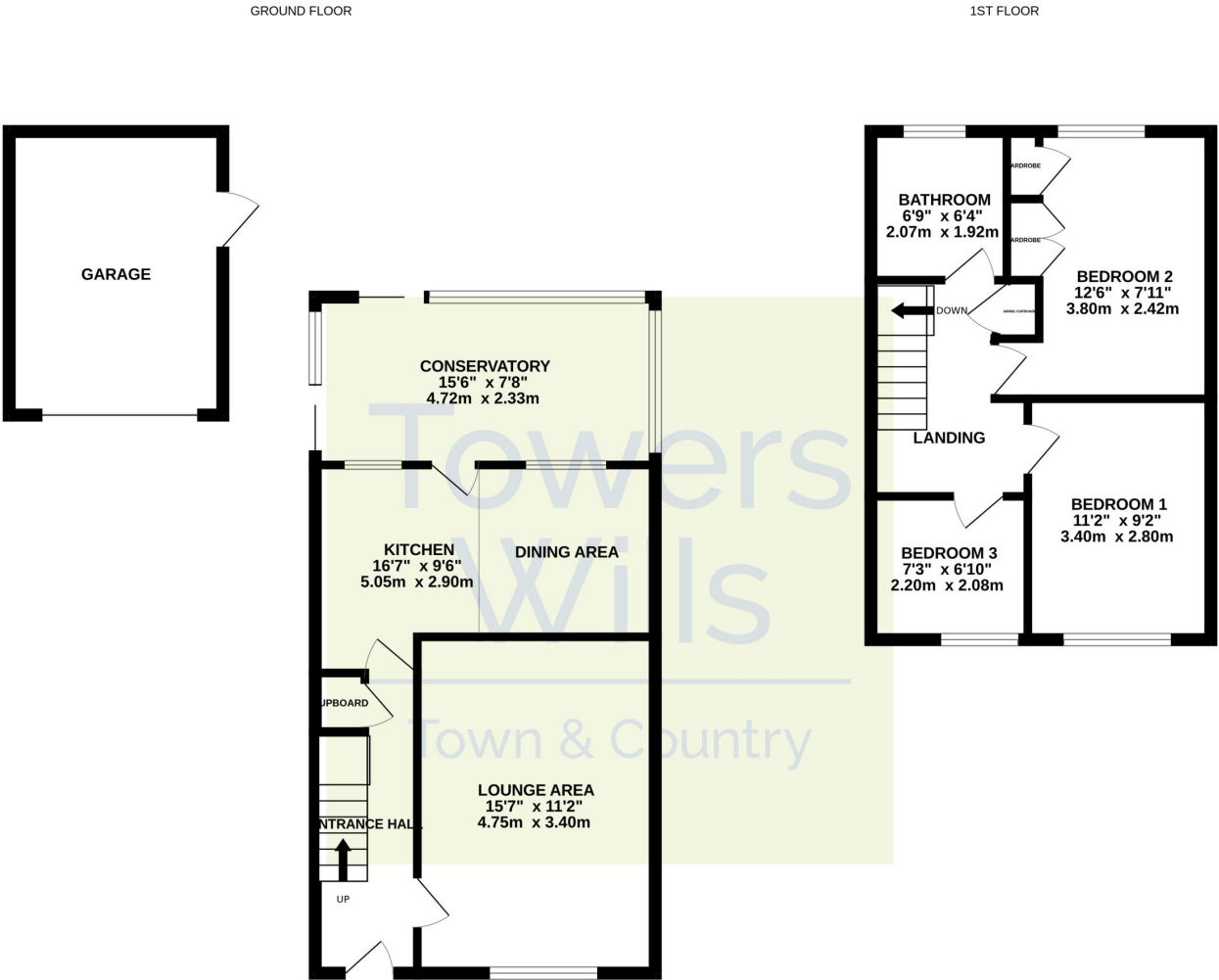
BA202RF

T: 01935 577032

E: info@towerswills.co.uk



Floor Plan



Whilst every attempt has been made to ensure the accuracy of the floorplan contained here, measurements of doors, windows, rooms and any other items are approximate and no responsibility is taken for any error, omission or mis-statement. This plan is for illustrative purposes only and should be used as such by any prospective purchaser. The services, systems and appliances shown have not been tested and no guarantee as to their operability or efficiency can be given.
Made with Metropix ©2025

Please Note No tests have been undertaken of any of the services and any intending purchasers should satisfy themselves in this regard. Towers Wills Ltd for themselves and for the vendor of this property whose agents they are, give notice that, (i) these particulars do not constitute any part of an offer or contract, (ii) all statements contained within these particulars are made without responsibility on the part of Towers Wills or the vendor, (iii) whilst made in good faith, none of the statements contained within these particulars are to be relied upon as a statement of representation or fact, (iv) any intending purchaser must satisfy him/herself by inspection or otherwise as to the correctness of each of the statements contained within these particulars, (v) the vendor does not make or give either Towers Wills or any person in their employment any authority to make or give representation or warranty whatsoever in relation to this property.

Photographs / Floor Plans Photographs are reproduced for general information and it must not be inferred that any item is included for sale with this property. Please note floor plans are not to scale and are for identification purposes only. The photographs used in these particulars may have been taken with the use of a wide angle lens. If you have any queries as to the size of the accommodation or plot, please address these with the agent prior to making an appointment to view

Towers Wills

The White House, 114 Hendford Hill, Yeovil BA20 2RF

Yeovil 01935 577032 / South Petherton 01460 298530

info@towerswills.co.uk | www.towerswills.co.uk