

# Towers Wills

Town & Country

📞 01935 577 032 | 01460 298 530 | ✉ info@towerswills.co.uk



**7, Hollies Close, Bower Hinton, Somerset TA12 6LB**

**£260,000**

Towers Wills welcome to the market this well presented, 3-bedroom mid terraced property situated in the popular village of Bower Hinton within easy reach of Martock with local shops and amenities. Accommodation briefly comprises of; porch, reception hallway, living area, dining area, kitchen, three bedrooms, bathroom, front and rear gardens, garage and parking.

Description

Towers Wills welcome to the market this well presented, 3-bedroom mid terraced property situated in the popular village of Bower Hinton within easy reach of Martock with local shops and amenities. Accommodation briefly comprises of; porch, reception hallway, living area, dining area, kitchen, three bedrooms, bathroom, front and rear gardens, garage and parking.

Storm Porch

With sliding patio door to the front and double-glazed door to the hallway.

Reception Hallway

Double glazed door to the front, stairs to the first floor and radiator.

Living Area

With double glazed window to the front, feature gas fireplace with surround and understairs storage cupboard.

Dining Area

With double glazed window to the rear, laminate flooring, radiator and sliding door to the kitchen.

Kitchen

Comprising of a range of wall, base and drawer units, work surfacing with inset stainless-steel sink/drainер, space for oven with cooker hood over, space for fridge/freezer, tiled floor, partly tiled walls, space for washing machine, double glazed window to the rear and double-glazed door to the rear garden.

First Floor Landing

Airing cupboard, loft access and radiator.

Bedroom One

Double glazed window to the front, fitted wardrobe and radiator.

Bedroom Two

Double glazed window to the rear, fitted wardrobe and radiator.

Bedroom Three

Double glazed window to the front, over stairs storage cupboard and radiator.

Bathroom

Suite comprising of bath with shower over, wash hand basin, W.C, tiling, radiator and window to the rear.

Outside

To the front of the property is an area of chipping, whilst to the rear of the property is an enclosed garden with gated rear access, in turn leading to allocated parking space and garage.

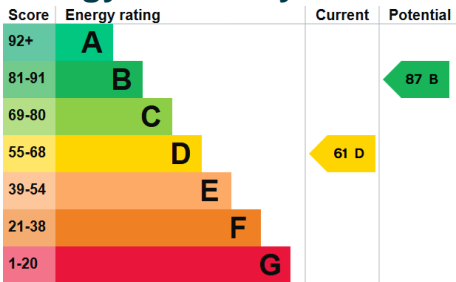
Key Features

- Well Presented
- 3 Bedrooms
- Mid Terrace
- Popular Village Location
- Close to Local Amenities

Contact Us

**Towers Wills Estate Agents - Yeovil**  
114, Hendford Hill  
Yeovil  
Somerset  
BA202RF  
T: 01935 577032  
E: info@towerswills.co.uk

Energy Efficiency



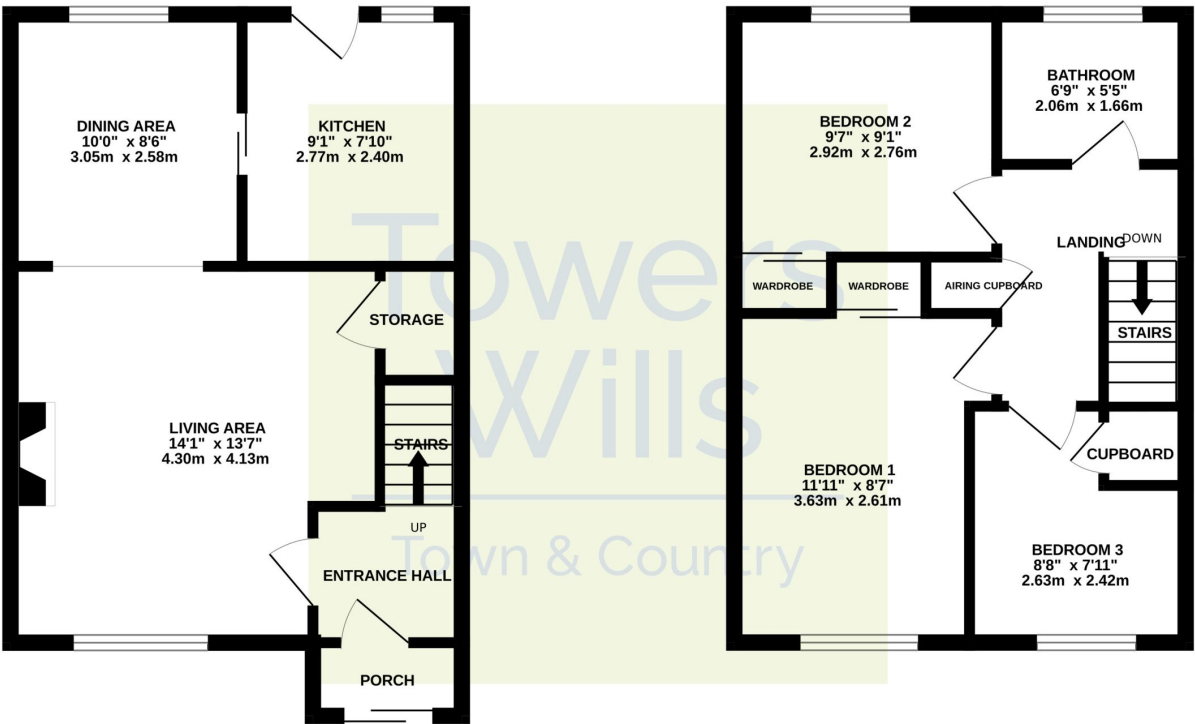




# Floor Plan

GROUND FLOOR

1ST FLOOR



Whilst every attempt has been made to ensure the accuracy of the floorplan contained here, measurements of doors, windows, rooms and any other items are approximate and no responsibility is taken for any error, omission or mis-statement. This plan is for illustrative purposes only and should be used as such by any prospective purchaser. The services, systems and appliances shown have not been tested and no guarantee as to their operability or efficiency can be given.  
Made with Metropix ©2025

Please Note No tests have been undertaken of any of the services and any intending purchasers should satisfy themselves in this regard. Towers Wills Ltd for themselves and for the vendor of this property whose agents they are, give notice that, (i) these particulars do not constitute any part of an offer or contract, (ii) all statements contained within these particulars are made without responsibility on the part of Towers Wills or the vendor , (iii) whilst made in good faith, none of the statements contained within these particulars are to be relied upon as a statement of representation or fact , (iv) any intending purchaser must satisfy him/herself by inspection or otherwise as to the correctness of each of the statements contained within these particulars, (v) the vendor does not make or give either Towers Wills or any person in their employment any authority to make or give representation or warranty whatsoever in relation to this property.

Photographs / Floor Plans Photographs are reproduced for general information and it must not be inferred that any item is included for sale with this property. Please note floor plans are not to scale and are for identification purposes only. The photographs used in these particulars may have been taken with the use of a wide angle lens. If you have any queries as to the size of the accommodation or plot, please address these with the agent prior to making an appointment to view

**Towers Wills**

The White House, 114 Hendford Hill, Yeovil BA20 2RF

Yeovil 01935 577032 / South Petherton 01460 298530

[info@towerswills.co.uk](mailto:info@towerswills.co.uk) | [www.towerswills.co.uk](http://www.towerswills.co.uk)