

Towers Wills

Town & Country

📞 01935 577 032 | 01460 298 530 | ✉ info@towerswills.co.uk



21, Bridle Way, Barwick, Somerset BA22 9TN

Offers Over £180,000

Towers Wills are delighted to welcome to market this two-bed, mid terraced property situated in the popular village of Barwick, near to Yeovil. Property briefly comprises of; lounge, kitchen/diner, two double bedrooms, bathroom and a pleasant southerly-facing rear garden. Please contact Towers Wills for more information and to book a viewing.

Entrance Hall

Double glazed door to front and electric radiator.

Lounge 4.39 x 4.10 – maximum measurements

Two double glazed windows to front, electric radiator and understairs cupboard.

Kitchen/Diner 3.01 x 5.12 – maximum measurements

Space for fridge/freezer, integrated electric oven and grill, space for washing machine, 1 ½ bowl porcelain sink/drainage, double glazed window and double-glazed French doors to rear garden.

Landing

Including loft hatch.

Bathroom

Double glazed window to rear, electric heated towel rail, bath with centre taps and electric shower over, wash hand basin and W.C.

Bedroom One 2.82 x 5.12 – maximum measurements

Two double glazed windows to front and airing cupboard including tank.

Bedroom Two 4.36 x 2.55 – maximum measurements

Double glazed window to rear, electric radiator and built-in wardrobe.

Outside

The front of the property is largely laid to lawn with planted borders.

Rear Garden

Largely laid to lawn with planted beds, patio area, outside tap and rear access.

Key Features

- Two Bedrooms
- Mid Terrace
- Popular Village Location
- Separate Lounge
- Open-plan kitchen/diner

Contact Us

Towers Wills Estate Agents - Yeovil

114, Hendford Hill

Yeovil

Somerset

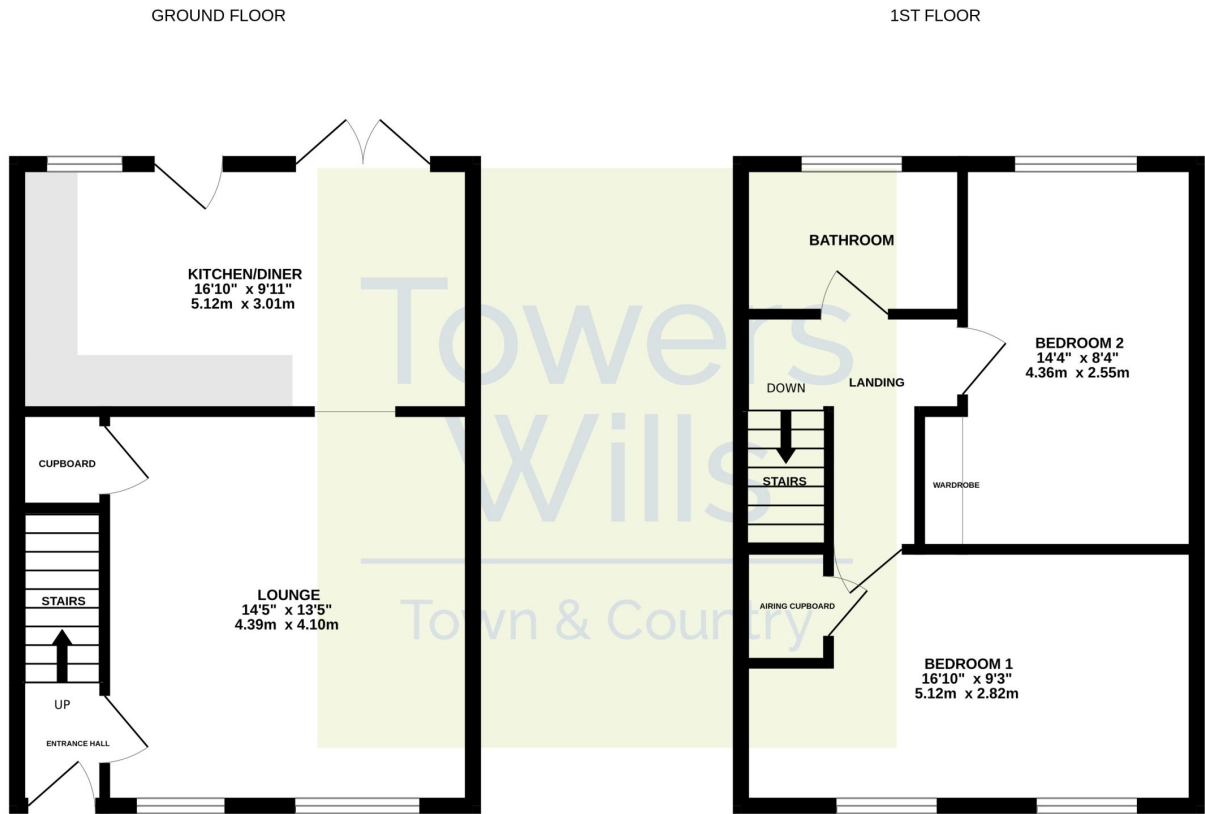
BA202RF

T: 01935 577032

E: info@towerswills.co.uk



Floor Plan



Whilst every attempt has been made to ensure the accuracy of the floorplan contained here, measurements of doors, windows, rooms and any other items are approximate and no responsibility is taken for any error, omission or mis-statement. This plan is for illustrative purposes only and should be used as such by any prospective purchaser. The services, systems and appliances shown have not been tested and no guarantee as to their operability or efficiency can be given.
Made with Metropix ©2025

Please Note No tests have been undertaken of any of the services and any intending purchasers should satisfy themselves in this regard. Towers Wills Ltd for themselves and for the vendor of this property whose agents they are, give notice that, (i) these particulars do not constitute any part of an offer or contract, (ii) all statements contained within these particulars are made without responsibility on the part of Towers Wills or the vendor , (iii) whilst made in good faith, none of the statements contained within these particulars are to be relied upon as a statement of representation or fact , (iv) any intending purchaser must satisfy him/herself by inspection or otherwise as to the correctness of each of the statements contained within these particulars, (v) the vendor does not make or give either Towers Wills or any person in their employment any authority to make or give representation or warranty whatsoever in relation to this property.

Photographs / Floor Plans Photographs are reproduced for general information and it must not be inferred that any item is included for sale with this property. Please note floor plans are not to scale and are for identification purposes only. The photographs used in these particulars may have been taken with the use of a wide angle lens. If you have any queries as to the size of the accommodation or plot, please address these with the agent prior to making an appointment to view