

# Towers Wills

Town & Country

📞 01935 577 032 | 01460 298 530 | ✉ info@towerswills.co.uk



191, St Johns Road, Yeovil, Somerset BA21 5QR

**£200,000**

Towers Wills welcome to the market this End Terrace property situated in a popular cul de sac position close to local amenities. The property briefly comprises of WC, kitchen/diner, lounge, three bedrooms, bathroom and garden.

## Entrance door leading into the hall.

### Hall

With warm air heating system and cupboard.

### W.C 0.97m x 1.46m

Fitted with WC, wash hand basin and window with outlook to the front.

### Lounge 3.51m x 4.79m

With feature fireplace, door leading out to the rear and patio doors leading out to the rear.

### Kitchen/Diner 2.93m x 5.04m

Fitted with patterned worktops and doors with a range of wall and base units. A one and a half bowl sink drainer unit with mixer tap, space for freestanding cooker, plumbing for washing machine, space for slimline dishwasher, boiler, (please note this is only connected to one radiator in bedroom two and also heats the hot water), part tiled walls and window with outlook to the front. There is also a large cupboard (0.85m x 2.95m that has space for fridge/freezer and tumble dryer)

### Landing

With hatch to roof space and cupboard.

### Bedroom One 2.95m x 4.96m

With window outlook to the rear.

### Bedroom Two 2.69m x 4.31m

With window outlook to the front and radiator.

### Bedroom Three 2.05m x 3.36m

With window outlook to then rear.

### Bathroom 1.84m x 2.04m

A white suite fitted with panel bath, electric shower over, WC, pedestal hand basin with mixer tap and window with outlook to the front.

### Garden

To the front there is a lawned area whilst to the rear the garden is mostly laid to lawn with patio area, outside power, enclosed by part brick wall and lap panel fencing and benefits from a gate leading out to the rear.

## Key Features

- End Terrace
- Three bedrooms
- Cul de sac position
- Kitchen/Diner
- Front and rear gardens

## Contact Us

### Towers Wills Estate Agents - Yeovil

114, Hendford Hill

Yeovil

Somerset

BA202RF

T: 01935 577032

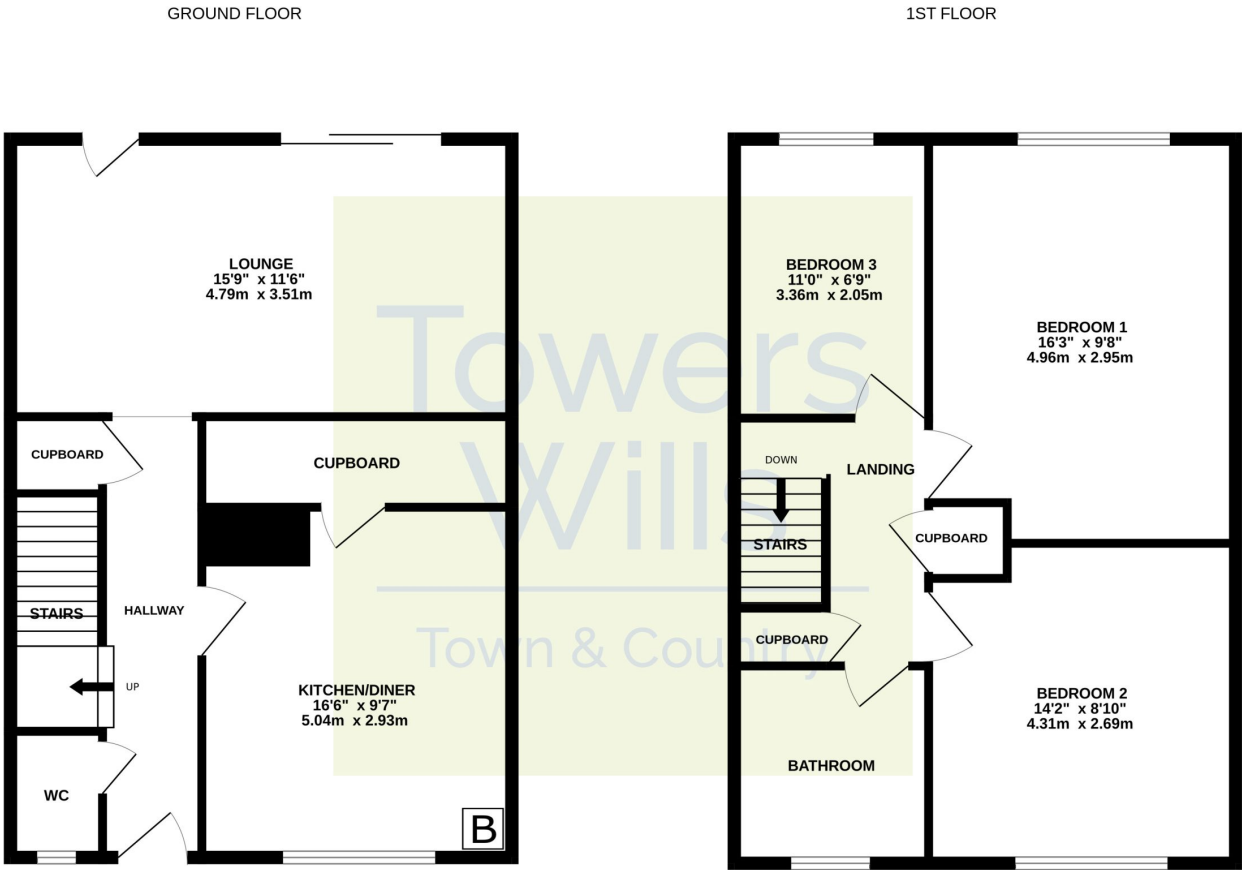
E: [info@towerswills.co.uk](mailto:info@towerswills.co.uk)







# Floor Plan



Whilst every attempt has been made to ensure the accuracy of the floorplan contained here, measurements of doors, windows, rooms and any other items are approximate and no responsibility is taken for any error, omission or mis-statement. This plan is for illustrative purposes only and should be used as such by any prospective purchaser. The services, systems and appliances shown have not been tested and no guarantee as to their operability or efficiency can be given.  
Made with Metropix ©2025

Please Note No tests have been undertaken of any of the services and any intending purchasers should satisfy themselves in this regard. Towers Wills Ltd for themselves and for the vendor of this property whose agents they are, give notice that, (i) these particulars do not constitute any part of an offer or contract, (ii) all statements contained within these particulars are made without responsibility on the part of Towers Wills or the vendor , (iii) whilst made in good faith, none of the statements contained within these particulars are to be relied upon as a statement of representation or fact , (iv) any intending purchaser must satisfy him/herself by inspection or otherwise as to the correctness of each of the statements contained within these particulars, (v) the vendor does not make or give either Towers Wills or any person in their employment any authority to make or give representation or warranty whatsoever in relation to this property.

Photographs / Floor Plans Photographs are reproduced for general information and it must not be inferred that any item is included for sale with this property. Please note floor plans are not to scale and are for identification purposes only. The photographs used in these particulars may have been taken with the use of a wide angle lens. If you have any queries as to the size of the accommodation or plot, please address these with the agent prior to making an appointment to view