

Towers Wills

Town & Country

📞 01935 577 032 | 01460 298 530 | ✉ info@towerswills.co.uk



15, Forest Hill, Yeovil, Somerset BA20 2PE

£250,000

Towers Wills are delighted to welcome to the market this three-bedroom semi-detached townhouse, situated in the ever-popular Forest Hill area of Yeovil. This ideal family home offers generous accommodation over three floors, benefiting from ample driveway parking, workshop, conservatory, delightful rear garden, and easy access to local amenities. This versatile home offers excellent value in a highly desirable area – early viewing is strongly advised.

Accommodation:

Ground Floor Accommodation

Entrance Hall

Accessed via front door, with useful storage cupboard and staircase rising to the first floor.

First Floor Accommodation

Lounge/Diner – 8.92m max x 4.74m max

A spacious open-plan living area with floor-to-ceiling double glazed windows to the front, two radiators, stairs rising to the second floor and descending to the ground floor. Double glazed patio doors open into:

Conservatory – 1.91m x 2.79m

A pleasant garden room with power and light, double glazed windows to the sides and rear, and two double glazed doors opening onto the garden.

Kitchen – 3.32m x 2.16m

Fitted with a range of base units and worktops, space for cooker with extractor over, plumbing for washing machine, one-and-a-half bowl steel sink/drain, space for under-counter fridge and freezer. Wall-mounted gas combi boiler and double glazed window to the rear aspect.

Second Floor Accommodation

Landing

With double glazed window to the side aspect and loft hatch.

Bedroom One – 4.18m x 2.83m

A spacious double bedroom with double glazed window to the front, radiator and built-in wardrobe.

Bedroom Two – 3.49m x 2.82m

Double bedroom with double glazed window to the rear, radiator and built-in wardrobe.

Bedroom Three – 3.31m x 1.81m (max measurements)

Double glazed window to the front, radiator and built-in storage cupboard.

Family Bathroom

Fitted with a white suite comprising panelled bath with electric shower over, wash hand basin, WC, heated towel rail, extractor fan, shaver point and double glazed window to the rear.

Outside

To the rear, the property enjoys a delightful enclosed garden set over multiple levels, with patio seating area ideal for outdoor dining, established planting, and side gated access to the front of the property.

Key Features

- Three Bedrooms
- Semi-Detached Townhouse
- Lounge/Diner & Conservatory
- Kitchen
- Family Bathroom
- Workshop (formerly garage)
- Ample Driveway Parking
- Popular Forest Hill Location
- Gas Central Heating (Combi Boiler)
- Double Glazing Throughout

Contact Us

Towers Wills Estate Agents - Yeovil

114, Hendford Hill

Yeovil

Somerset

BA202RF

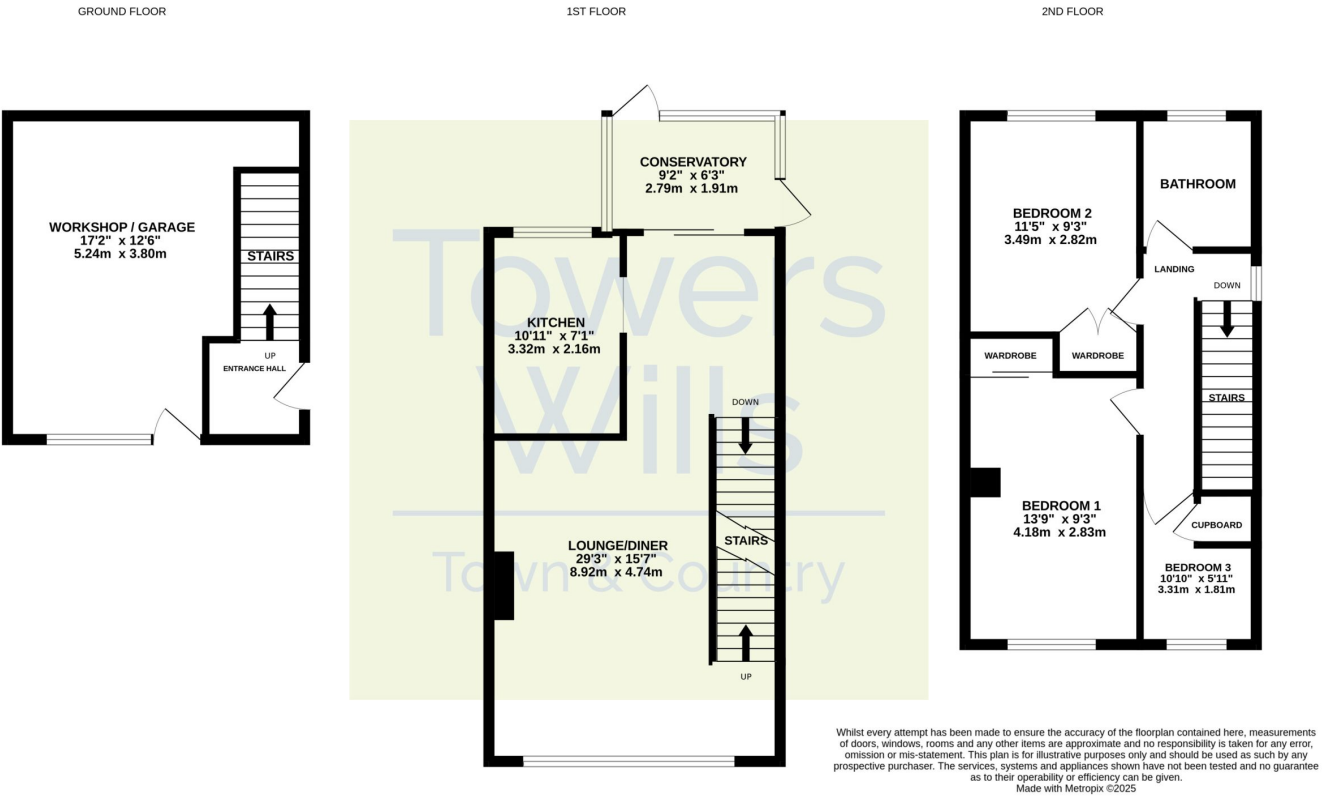
T: 01935 577032

E: info@towerswills.co.uk

To the front, there is ample driveway parking, leading to a workshop (formerly a garage), now converted with the addition of a double glazed window and door in place of the original up-and-over garage door (this could be reinstated by buyers who prefer a garage).



Floor Plan



Please Note No tests have been undertaken of any of the services and any intending purchasers should satisfy themselves in this regard. Towers Wills Ltd for themselves and for the vendor of this property whose agents they are, give notice that, (i) these particulars do not constitute any part of an offer or contract, (ii) all statements contained within these particulars are made without responsibility on the part of Towers Wills or the vendor , (iii) whilst made in good faith, none of the statements contained within these particulars are to be relied upon as a statement of representation or fact , (iv) any intending purchaser must satisfy him/herself by inspection or otherwise as to the correctness of each of the statements contained within these particulars, (v) the vendor does not make or give either Towers Wills or any person in their employment any authority to make or give representation or warranty whatsoever in relation to this property.

Photographs / Floor Plans Photographs are reproduced for general information and it must not be inferred that any item is included for sale with this property. Please note floor plans are not to scale and are for identification purposes only. The photographs used in these particulars may have been taken with the use of a wide angle lens. If you have any queries as to the size of the accommodation or plot, please address these with the agent prior to making an appointment to view