

Towers Wills

Town & Country

📞 01935 577 032 | 01460 298 530 | ✉ info@towerswills.co.uk



15, Parish Mews, Yeovil, Somerset BA21 3AS

£290,000

Towers Wills are pleased to offer to market this spacious four bedrooms home. Located in a sought-after area of Yeovil, this well-presented four-bedroom family home offers spacious living throughout. Features include a generous lounge/diner with French doors to the garden, a modern fitted kitchen, and a downstairs cloakroom. Upstairs benefits from four bedrooms, including a master with en suite, and a family bathroom. The enclosed rear garden includes a decked area, lawn, and pond, with access to a tandem garage and additional driveway parking. Ideal for families seeking space and convenience close to local amenities.

Accommodation:

Accommodation

The property welcomes you with a bright entrance hall leading to a useful downstairs cloakroom. The spacious lounge/diner is ideal for family living and entertaining, featuring a gas fireplace, two radiators, and French doors opening onto the garden. The modern kitchen is well-equipped with a range of wall and base units, integrated fridge/freezer, oven and gas hob, and space for both a washing machine and dishwasher. A large front-facing window fills the space with natural light.

Upstairs, the property offers four well-proportioned bedrooms. The principal bedroom benefits from an en suite shower room, mirrored built-in wardrobe, and airing cupboard. The remaining three bedrooms are served by a contemporary family bathroom with a bath and shower mixer tap.

Outside

The fully enclosed rear garden features a decked seating area, a lawn with mature trees and shrubs, and a charming pond, creating a peaceful outdoor space. A door from the garden provides access to the garage.

Parking

The garage offers power and lighting, with space to park two cars in tandem. There is also an additional parking space in front of the garage.

This home is ideal for growing families seeking space, light, and convenience in a popular residential location. Early viewing is highly recommended

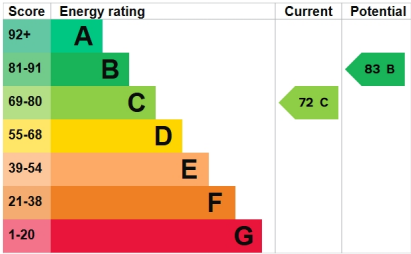
Key Features

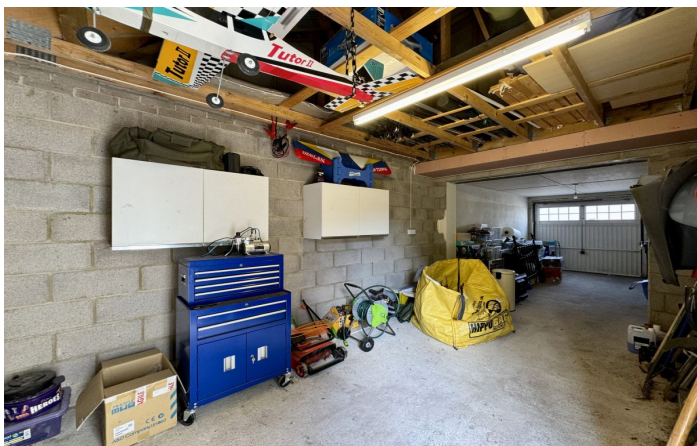
- Well Presented Throughout
- Sought After Location
- Four Bedrooms
- Master En-suite
- Garage & Parking
- Rear Garden

Contact Us

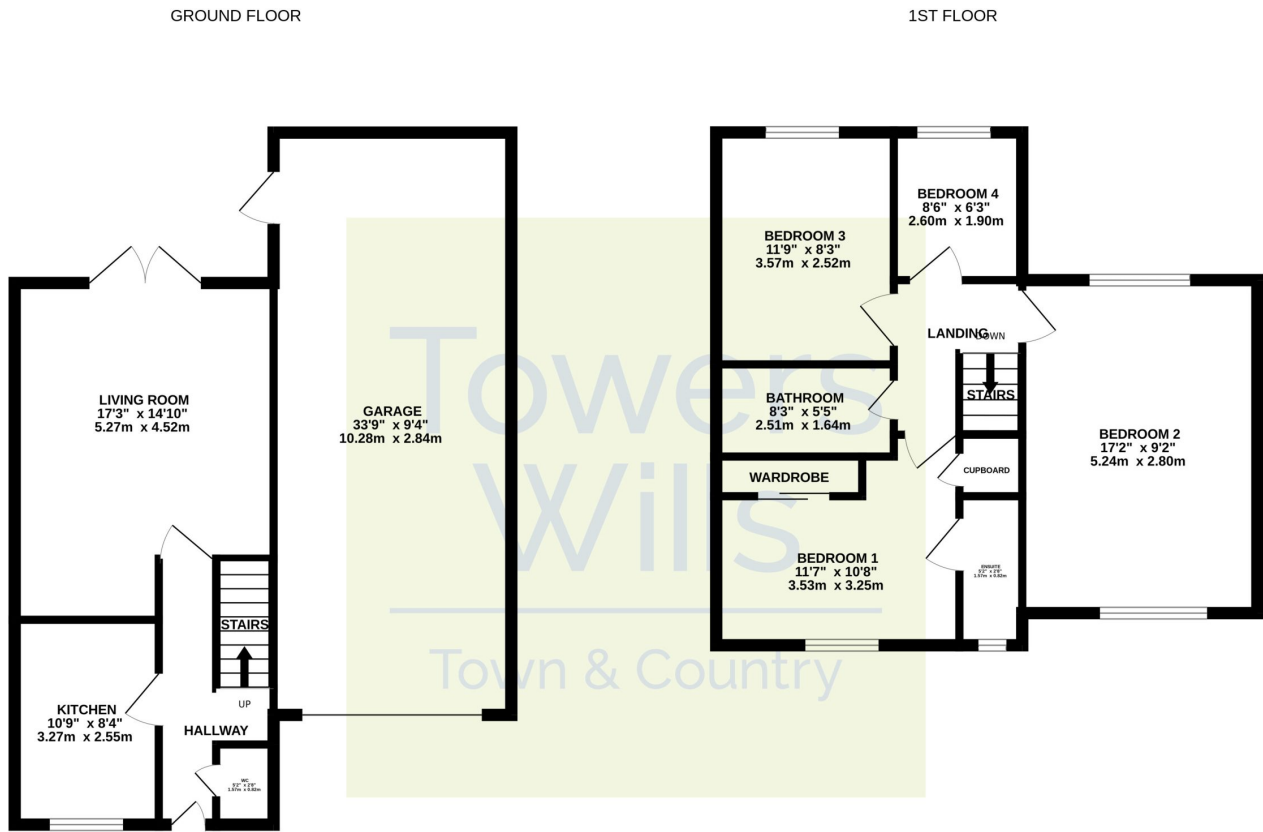
Towers Wills Estate Agents - Yeovil
114, Hendford Hill
Yeovil
Somerset
BA202RF
T: 01935 577032
E: info@towerswills.co.uk

Energy Efficiency





Floor Plan



Whilst every attempt has been made to ensure the accuracy of the floorplan contained here, measurements of doors, windows, rooms and any other items are approximate and no responsibility is taken for any error, omission or mis-statement. This plan is for illustrative purposes only and should be used as such by any prospective purchaser. The services, systems and appliances shown have not been tested and no guarantee as to their operability or efficiency can be given.
Made with Metropix ©2025

Please Note No tests have been undertaken of any of the services and any intending purchasers should satisfy themselves in this regard. Towers Wills Ltd for themselves and for the vendor of this property whose agents they are, give notice that, (i) these particulars do not constitute any part of an offer or contract, (ii) all statements contained within these particulars are made without responsibility on the part of Towers Wills or the vendor, (iii) whilst made in good faith, none of the statements contained within these particulars are to be relied upon as a statement of representation or fact, (iv) any intending purchaser must satisfy him/herself by inspection or otherwise as to the correctness of each of the statements contained within these particulars, (v) the vendor does not make or give either Towers Wills or any person in their employment any authority to make or give representation or warranty whatsoever in relation to this property.

Photographs / Floor Plans Photographs are reproduced for general information and it must not be inferred that any item is included for sale with this property. Please note floor plans are not to scale and are for identification purposes only. The photographs used in these particulars may have been taken with the use of a wide angle lens. If you have any queries as to the size of the accommodation or plot, please address these with the agent prior to making an appointment to view

Towers Wills

The White House, 114 Hendford Hill, Yeovil BA20 2RF

Yeovil 01935 577032 / South Petherton 01460 298530

info@towerswills.co.uk | www.towerswills.co.uk