

Towers Wills

Town & Country

📞 01935 577 032 | 01460 298 530 | ✉ info@towerswills.co.uk



2, Richmond Place, Yeovil, Somerset BA20 1DS

£240,000

Towers Wills are pleased to welcome to market this beautifully presented three-storey townhouse located close to the town centre, offering spacious and modern accommodation throughout. The ground floor features a contemporary kitchen/dining room, a generous sitting room with French doors to the garden, and a downstairs cloakroom. The first floor offers two bedrooms—one with an en-suite—and a family bathroom, while the entire top floor is dedicated to a luxurious master suite with en-suite and private balcony. Additional benefits include gas central heating, double glazing, a low-maintenance rear garden, and allocated off-road parking. Ideal for families or professionals, this home combines style, space, and convenience.

Accommodation:

A beautifully presented and spacious three-storey townhouse, ideally located within easy reach of the town centre, offering modern finishes, a versatile layout, and the added benefit of off-road parking. This well-maintained home has been thoughtfully designed for contemporary family living or professional lifestyles, combining style, space, and functionality throughout.

Upon entering the property, you are welcomed by a spacious entrance hall which provides access to a convenient downstairs cloakroom and all ground floor rooms. To the front of the property is a bright and modern kitchen/dining room, fitted with a range of sleek, contemporary units and integrated appliances—ideal for both everyday cooking and entertaining. To the rear, the generously sized sitting room enjoys a pleasant garden outlook and features French doors that open directly onto the private, low-maintenance garden, creating a seamless transition between indoor and outdoor living.

The first floor comprises two well-proportioned bedrooms, one of which benefits from its own en-suite shower room, offering additional privacy and convenience. A stylish family bathroom serves the second bedroom and guests.

The entire second floor is dedicated to the impressive master suite, providing a peaceful and private retreat. This spacious room features a contemporary en-suite shower room and a private front-facing balcony with elevated views—perfect for enjoying your morning coffee or winding down in the evening.

Additional benefits include gas central heating, double glazing throughout, and excellent built-in storage across all three floors.

The rear garden is laid mainly to hardstanding for ease of maintenance and provides a great space for outdoor seating or entertaining. A gated access at the rear leads directly to the property's allocated off-road parking space.

This superb home must be viewed to fully appreciate the generous accommodation, natural light, and high standard of finish on offer. Ideally suited to families or professionals, it offers comfort, convenience, and a well-connected location close to the town centre.

Key Features

- Beautifully Presented Throughout
- Walking Distance to Town Centre & Hospital
- Three Bedrooms
- Two En-suites & Family Bathroom
- Private Balcony
- Low Maintenance Garden
- Off Road Parking

Contact Us

Towers Wills Estate Agents - Yeovil

114, Hendford Hill
Yeovil

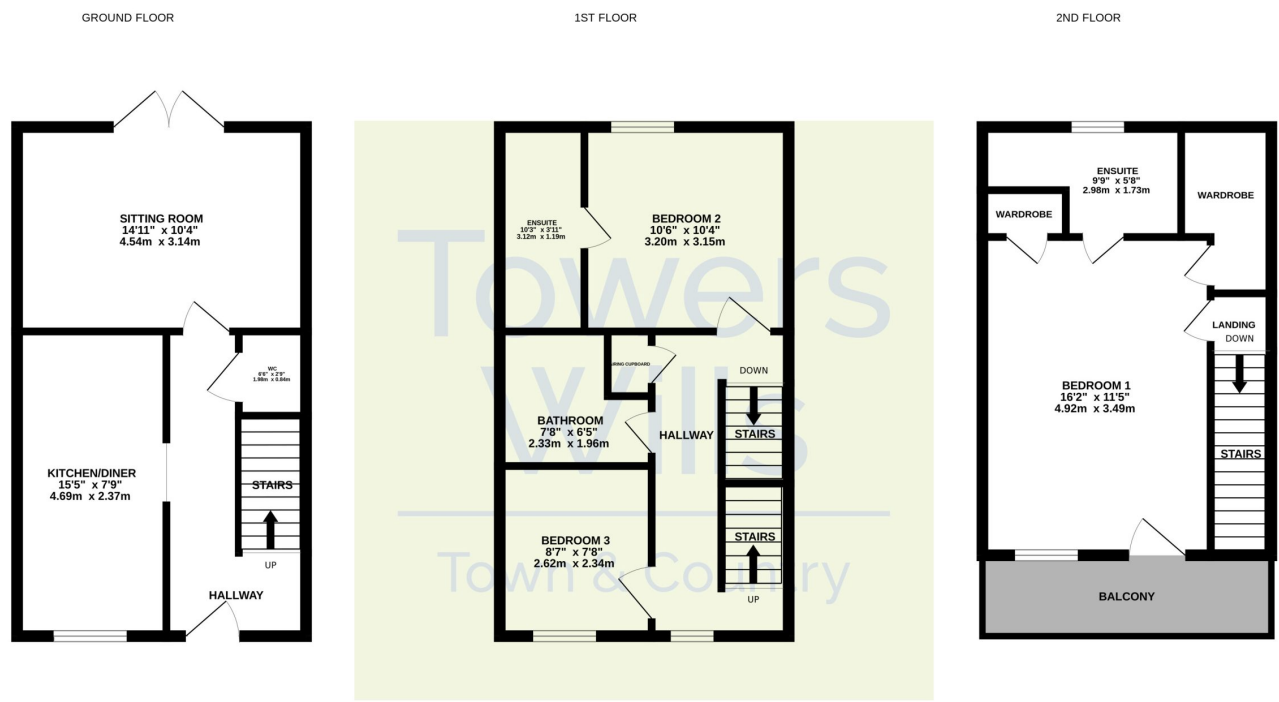
Somerset
BA202RF

T: 01935 577032

E: info@towerswills.co.uk



Floor Plan



Whilst every attempt has been made to ensure the accuracy of the floorplan contained here, measurements of doors, windows, rooms and any other items are approximate and no responsibility is taken for any error, omission or mis-statement. This plan is for illustrative purposes only and should be used as such by any prospective purchaser. The services, systems and appliances shown have not been tested and no guarantee as to their operability or efficiency can be given.
Made with Metropix ©2025

Please Note No tests have been undertaken of any of the services and any intending purchasers should satisfy themselves in this regard. Towers Wills Ltd for themselves and for the vendor of this property whose agents they are, give notice that, (i) these particulars do not constitute any part of an offer or contract, (ii) all statements contained within these particulars are made without responsibility on the part of Towers Wills or the vendor, (iii) whilst made in good faith, none of the statements contained within these particulars are to be relied upon as a statement of representation or fact, (iv) any intending purchaser must satisfy him/herself by inspection or otherwise as to the correctness of each of the statements contained within these particulars, (v) the vendor does not make or give either Towers Wills or any person in their employment any authority to make or give representation or warranty whatsoever in relation to this property.

Photographs / Floor Plans Photographs are reproduced for general information and it must not be inferred that any item is included for sale with this property. Please note floor plans are not to scale and are for identification purposes only. The photographs used in these particulars may have been taken with the use of a wide angle lens. If you have any queries as to the size of the accommodation or plot, please address these with the agent prior to making an appointment to view

Towers Wills

The White House, 114 Hendford Hill, Yeovil BA20 2RF

Yeovil 01935 577032 / South Petherton 01460 298530

info@towerswills.co.uk | www.towerswills.co.uk