

# Towers Wills

Town & Country

📞 01935 577 032 | 01460 298 530 | ✉ info@towerswills.co.uk



5, Woodcote, Yeovil, Somerset BA20 2SE

**£200,000**

Towers Wills are pleased to welcome to market this delightful two bedroom property features a modern kitchen, spacious lounge with garden access, and two double bedrooms. Outside offers an enclosed rear garden with rear access, plus a garage in a nearby block with parking in front—ideal for first-time buyers or investors.

Accommodation:

Located in a popular residential area, this well-presented two bedroom terraced property offers comfortable living space ideal for first-time buyers, small families, or investors.

Upon entering the property, you're welcomed by an entrance hall featuring a double glazed front door, archway leading through to a bright and functional kitchen. The kitchen is fitted with a range of wall, base, and drawer units, an integrated oven, and has designated space for a fridge freezer and washing machine. A double glazed window to the front allows for plenty of natural light.

A door from the hall opens into the spacious lounge, which enjoys views over the rear garden through double glazed sliding doors. The lounge also benefits from a handy understairs storage cupboard.

Upstairs, the first floor accommodation includes two generously sized double bedrooms. The front-facing bedroom features a built-in storage cupboard and a double glazed window, while the master bedroom overlooks the rear garden through another double glazed window.

Externally, the property boasts an enclosed rear garden, mainly laid to lawn, with space for a shed and rear gate access. A garage is located in a nearby block, with parking conveniently situated in front.

This delightful home offers excellent potential and should be viewed to be fully appreciated.

Key Features

- Two double bedrooms
- Spacious lounge with garden access
- Modern fitted kitchen
- Enclosed rear garden with rear access
- Garage in a block with parking in front
- Popular residential location
- Ideal for first-time buyers or investors

Contact Us

**Towers Wills Estate Agents - Yeovil**  
114, Hendford Hill  
Yeovil  
Somerset  
BA202RF  
T: 01935 577032  
E: info@towerswills.co.uk

Energy Efficiency

Score	Energy rating	Current	Potential
92+	A		
81-91	B		81 B
69-80	C	76 C	
55-68	D		
39-54	E		
21-38	F		
1-20	G		



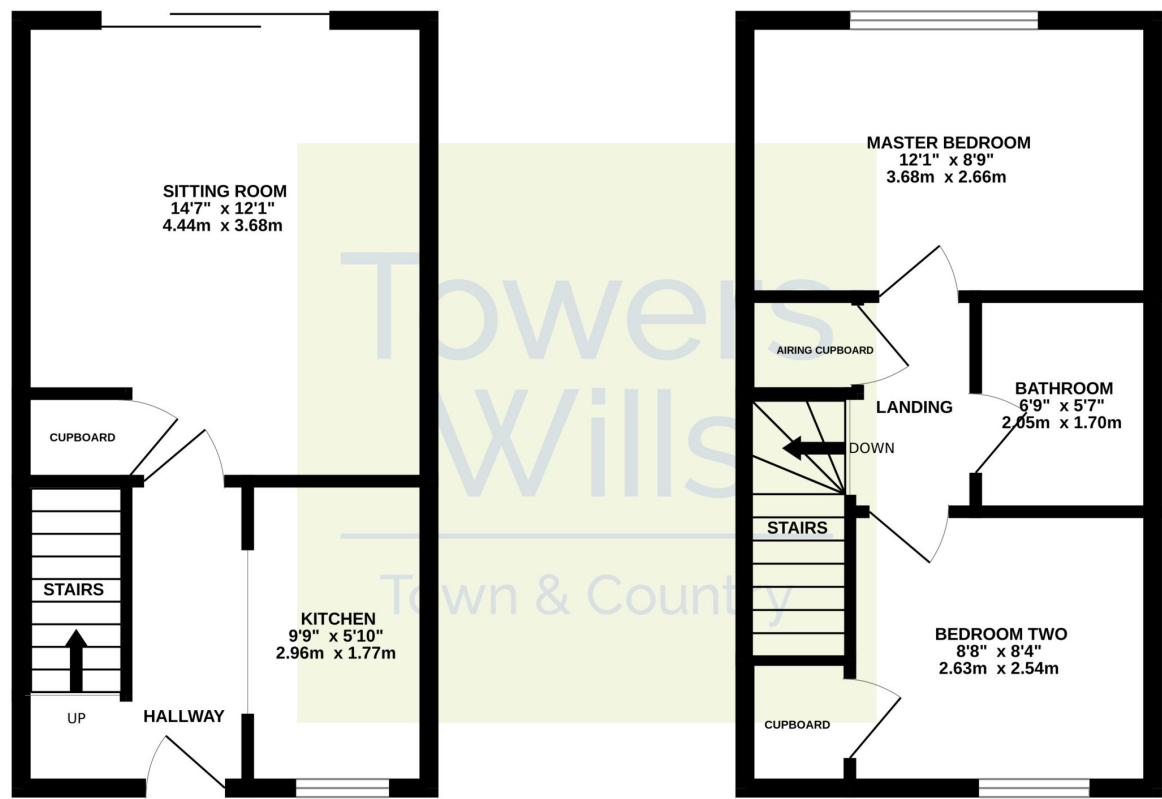




# Floor Plan

GROUND FLOOR

1ST FLOOR



Whilst every attempt has been made to ensure the accuracy of the floorplan contained here, measurements of doors, windows, rooms and any other items are approximate and no responsibility is taken for any error, omission or mis-statement. This plan is for illustrative purposes only and should be used as such by any prospective purchaser. The services, systems and appliances shown have not been tested and no guarantee as to their operability or efficiency can be given.  
Made with Metropix ©2025

Please Note No tests have been undertaken of any of the services and any intending purchasers should satisfy themselves in this regard. Towers Wills Ltd for themselves and for the vendor of this property whose agents they are, give notice that, (i) these particulars do not constitute any part of an offer or contract, (ii) all statements contained within these particulars are made without responsibility on the part of Towers Wills or the vendor , (iii) whilst made in good faith, none of the statements contained within these particulars are to be relied upon as a statement of representation or fact , (iv) any intending purchaser must satisfy him/herself by inspection or otherwise as to the correctness of each of the statements contained within these particulars, (v) the vendor does not make or give either Towers Wills or any person in their employment any authority to make or give representation or warranty whatsoever in relation to this property.

Photographs / Floor Plans Photographs are reproduced for general information and it must not be inferred that any item is included for sale with this property. Please note floor plans are not to scale and are for identification purposes only. The photographs used in these particulars may have been taken with the use of a wide angle lens. If you have any queries as to the size of the accommodation or plot, please address these with the agent prior to making an appointment to view