

# Towers Wills

Town & Country

📞 01935 577 032 | 01460 298 530 | ✉ info@towerswills.co.uk



15, The Twines, Yeovil, Somerset BA20 2GF

**£148,500**

\*Shared Ownership\* - A 45% share is available for this spacious and well-appointed semi-detached family home, situated within the popular residential development of Bunford Heights on the edge of Yeovil. Enjoying convenient access to major commuter links and with Yeovil town centre just a short distance away, this property offers an excellent opportunity for a wide range of purchasers and is available through both Shared Ownership and Full Ownership options, please contact Towers Wills for more information.

Internally, the property offers surprisingly generous accommodation throughout, with the ground floor comprising a welcoming entrance hallway, useful storage cupboard and a convenient downstairs WC. The spacious lounge provides a comfortable living area, ideal for both relaxing and entertaining.

To the rear of the property is a well-equipped and generously proportioned kitchen/diner, offering ample space for family dining and day-to-day living. Double French doors open directly onto the good sized, enclosed rear garden, creating an excellent indoor-outdoor flow and allowing plenty of natural light into the room.

To the first floor, the property continues to impress with four well-proportioned double bedrooms, all of which are exceptionally generous in size and offer flexible

**Outside:**

The rear garden is of an impressive size, being predominantly laid to lawn and complemented by a patio seating area, making it an ideal space for families, entertaining guests or enjoying the warmer months. accommodation for growing families, home working or guest rooms. These are served by a modern and contemporary family bathroom finished to a high standard.

Externally, the property benefits from two allocated off-road parking spaces to the front.

This fantastic home represents a rare opportunity for first-time buyers and families alike to secure a spacious four-bedroom property within a highly sought-after location. Viewing is highly recommended to fully appreciate the space, presentation and excellent value this wonderful home has to offer.

**Agents Note:**

We have been made aware of the following lease details:

121 years remaining on the lease

Monthly charge of £514.95

## Key Features

- SHARED OWNERSHIP - 45% Share
- Four Bedrooms
- Well Presented Throughout
- Semi Detached
- Off Road Parking
- Garden

## Contact Us

**Towers Wills Estate Agents - Yeovil**

114, Hendford Hill

Yeovil

Somerset

BA202RF

T: 01935 577032

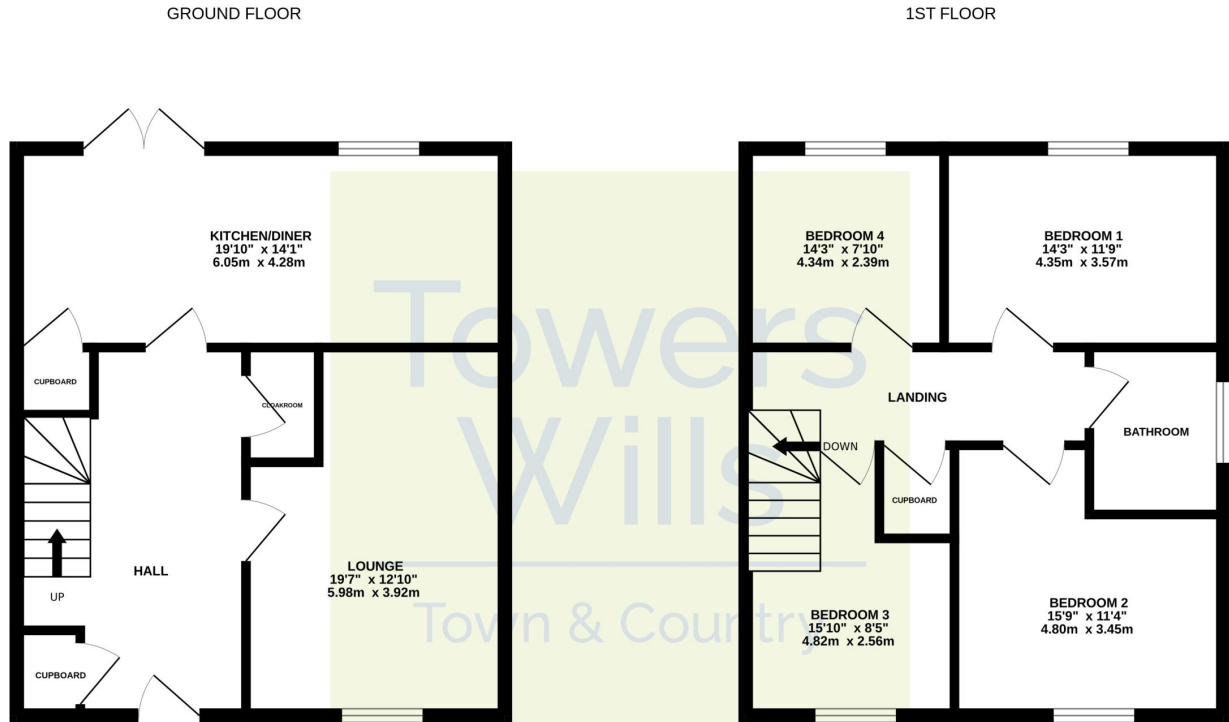
E: [info@towerswills.co.uk](mailto:info@towerswills.co.uk)

## Energy Efficiency

Score	Energy rating	Current	Potential
92+	A		94 A
81-91	B	85 B	
69-80	C		
55-68	D		
39-54	E		
21-38	F		
1-20	G		



# Floor Plan



Whilst every attempt has been made to ensure the accuracy of the floorplan contained here, measurements of doors, windows, rooms and any other items are approximate and no responsibility is taken for any error, omission or mis-statement. This plan is for illustrative purposes only and should be used as such by any prospective purchaser. The services, systems and appliances shown have not been tested and no guarantee as to their operability or efficiency can be given.  
Made with Metropix ©2025

Please Note No tests have been undertaken of any of the services and any intending purchasers should satisfy themselves in this regard. Towers Wills Ltd for themselves and for the vendor of this property whose agents they are, give notice that, (i) these particulars do not constitute any part of an offer or contract, (ii) all statements contained within these particulars are made without responsibility on the part of Towers Wills or the vendor, (iii) whilst made in good faith, none of the statements contained within these particulars are to be relied upon as a statement of representation or fact, (iv) any intending purchaser must satisfy him/herself by inspection or otherwise as to the correctness of each of the statements contained within these particulars, (v) the vendor does not make or give either Towers Wills or any person in their employment any authority to make or give representation or warranty whatsoever in relation to this property.

Photographs / Floor Plans Photographs are reproduced for general information and it must not be inferred that any item is included for sale with this property. Please note floor plans are not to scale and are for identification purposes only. The photographs used in these particulars may have been taken with the use of a wide angle lens. If you have any queries as to the size of the accommodation or plot, please address these with the agent prior to making an appointment to view

**Towers Wills**

The White House, 114 Hendford Hill, Yeovil BA20 2RF

Yeovil 01935 577032 / South Petherton 01460 298530

[info@towerswills.co.uk](mailto:info@towerswills.co.uk) | [www.towerswills.co.uk](http://www.towerswills.co.uk)