

Towers Wills

Town & Country

📞 01935 577 032 | 01460 298 530 | ✉ info@towerswills.co.uk



18, Hill View, Mudford, Yeovil, Somerset BA21 5TH

£250,000

Towers Wills are delighted to bring to market this well-presented home situated in the popular village of Mudford, near Yeovil. Selling with no onward chain, the property has a particularly large rear garden (approx. 120ft) and benefits from ample driveway parking, downstairs WC, kitchen/diner, lounge, three bedrooms (two double) and family bathroom.

Entrance Hall

Double glazed door to the front and radiator.

Lounge 4.11m x 3.85m – maximum measurements

Double glazed window to the front and radiator.

Kitchen/Diner 4.09m x 3.41m – maximum measurements

Comprising of a range of wall, base and drawer units, work surfacing with stainless steel one and a half bowl sink drainer, double glazed window to the rear, radiator, space for fridge freezer, integrated gas hob with extractor hood over, integrated electric oven and space for slimline dishwasher.

Utility 2.67m x 1.60m – maximum measurements

Double glazed window to the side, double glazed door to the rear, space for washing machine, space for dryer and central heating combi boiler (LPG).

W.C

Includes w.c, wash hand basin and extractor fan.

First Floor Landing

Double glazed window to the side and loft hatch.

Bathroom

Suite comprising bath, separate shower cubicle, wash hand basin, w.c, double glazed window to the side, heated towel rail and extractor fan.

Bedroom One 3.52m x 2.58m – maximum measurements

Double glazed window to the rear, radiator and built-in wardrobe.

Bedroom Two 3.13m x 3.01m – maximum measurements

Double glazed window to the front, radiator and built-in wardrobe.

Bedroom Three 2.51m x 2.51m

Double glazed window to the rear, radiator and built-in wardrobe.

Outside

To the front of the property is a parking area, largely laid to gravel with planted borders and side access to the rear garden.

Rear Garden

The large rear garden is mainly laid to lawn with patio area, outside tap and there is a brick-built outhouse with power and light connected.

Key Features

- End of Terrace
- Three Bedrooms
- Popular Village Location
- Large Rear Garden
- Ample Driveway Parking
- NO ONWARD CHAIN

Contact Us

Towers Wills Estate Agents - Yeovil

114, Hendford Hill

Yeovil

Somerset

BA202RF

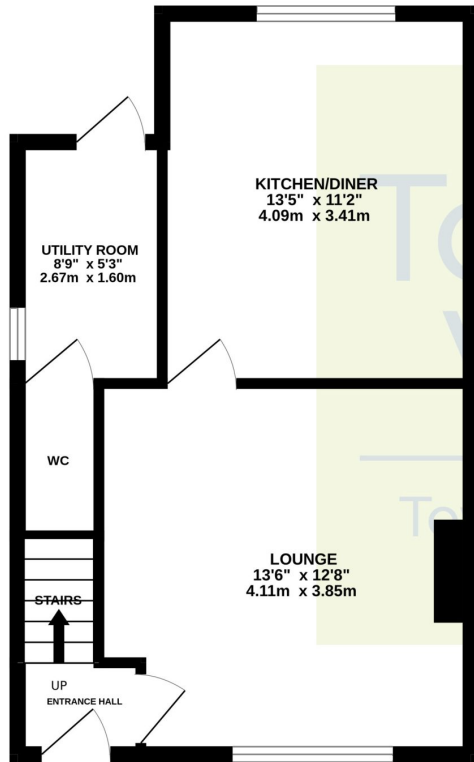
T: 01935 577032

E: info@towerswills.co.uk

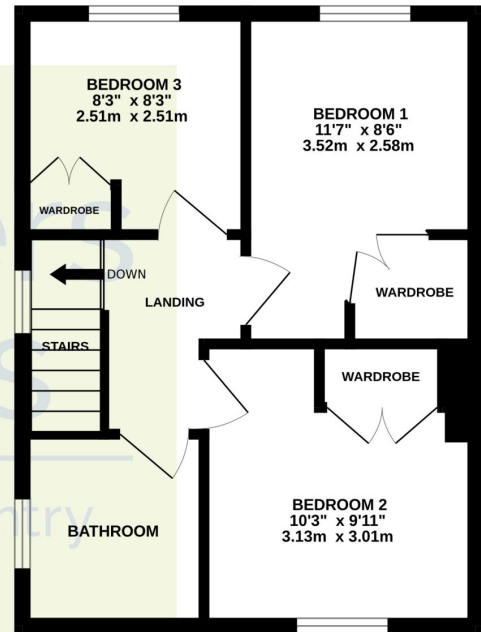


Floor Plan

GROUND FLOOR



1ST FLOOR



Whilst every attempt has been made to ensure the accuracy of the floorplan contained here, measurements of doors, windows, rooms and any other items are approximate and no responsibility is taken for any error, omission or mis-statement. This plan is for illustrative purposes only and should be used as such by any prospective purchaser. The services, systems and appliances shown have not been tested and no guarantee as to their operability or efficiency can be given.
Made with Metropix ©2025

Please Note No tests have been undertaken of any of the services and any intending purchasers should satisfy themselves in this regard. Towers Wills Ltd for themselves and for the vendor of this property whose agents they are, give notice that, (i) these particulars do not constitute any part of an offer or contract, (ii) all statements contained within these particulars are made without responsibility on the part of Towers Wills or the vendor, (iii) whilst made in good faith, none of the statements contained within these particulars are to be relied upon as a statement of representation or fact, (iv) any intending purchaser must satisfy him/herself by inspection or otherwise as to the correctness of each of the statements contained within these particulars, (v) the vendor does not make or give either Towers Wills or any person in their employment any authority to make or give representation or warranty whatsoever in relation to this property.

Photographs / Floor Plans Photographs are reproduced for general information and it must not be inferred that any item is included for sale with this property. Please note floor plans are not to scale and are for identification purposes only. The photographs used in these particulars may have been taken with the use of a wide angle lens. If you have any queries as to the size of the accommodation or plot, please address these with the agent prior to making an appointment to view

Towers Wills

The White House, 114 Hendford Hill, Yeovil BA20 2RF

Yeovil 01935 577032 / South Petherton 01460 298530

info@towerswills.co.uk | www.towerswills.co.uk