





**Towers
Wills**

Town & Country

22 Cabot Road, Yeovil, Somerset, BA21 5FQ

£500,000

 01935 577 032 | 01460 298 530 |  info@towerswills.co.uk



Towers Wills welcome to the market a stunning four-bedroom detached family home enjoying glorious countryside views to the front and presented to an exceptional standard throughout. Features include four double bedrooms, two en suites including an impressive master suite with dressing area, a superb open-plan kitchen/breakfast/family room, separate living room, dining room, study, double garage and enclosed rear garden. Occupying what must be one of the most prime positions on Wyndham Park.

***Detached Family Home**

***Popular Wyndham Park Development**

***Immaculately Presented Throughout**

***Four Double Bedrooms**

***Two En-suites**

***Double Garage & Driveway**

***Enclosed Rear Garden**

***Early Viewing Highly Recommended**

***Countryside Views**





Accommodation:

Constructed by renowned housebuilder David Wilson Homes in 2016, this beautifully presented four-bedroom detached family home is finished to an exceptional show-home standard throughout and occupies a prime position towards the end of the development, enjoying glorious countryside views to the front and a more peaceful, tucked-away setting.

A storm porch leads through into a spacious and welcoming reception hallway, setting the tone for the quality and space found throughout the property. The ground floor accommodation is perfectly designed for modern family living and entertaining, offering a superb balance of open-plan living alongside more formal reception areas.

The living room is a wonderfully light and comfortable space with double doors opening directly onto the rear garden, creating seamless indoor and outdoor living during the warmer months. Undoubtedly the heart of the home is the stunning open-plan kitchen, breakfast and family room — a superb social space ideal for entertaining family and friends. The modern fitted kitchen comprises an extensive range of wall, base and drawer units with work surfacing over, one and a half bowl sink/drain, integrated dishwasher, integrated fridge and freezer, AEG integrated double electric oven and an AEG six-ring gas hob with cooker hood over. The breakfast area offers ample space for a dining table and chairs, whilst the family area provides further room for seating and relaxing with double doors opening out onto the rear garden.



A practical utility room provides additional convenience with plumbing and space for both washing machine and tumble dryer, sink/drain, work surfacing, base units and door to the side. The formal dining room enjoys a pleasant bay window to the front taking full advantage of the wonderful countryside outlook, whilst the separate study also enjoys views to the front and provides the ideal work-from-home space. A convenient WC also located to the ground floor.

To the first floor, the property continues to impress with four generous double bedrooms, two of which benefit from en suite facilities. The impressive principal bedroom features a large walk-in dressing area with an extensive range of wardrobe hanging and storage space together with a luxurious en suite bathroom comprising bath, separate shower cubicle, wash hand basin and WC. Bedroom two also benefits from its own private en suite shower room comprising shower cubicle, wash hand basin and WC. Bedrooms three and four are both excellent double rooms and are served by the beautifully appointed family bathroom fitted with bath, separate shower cubicle, wash hand basin and WC.



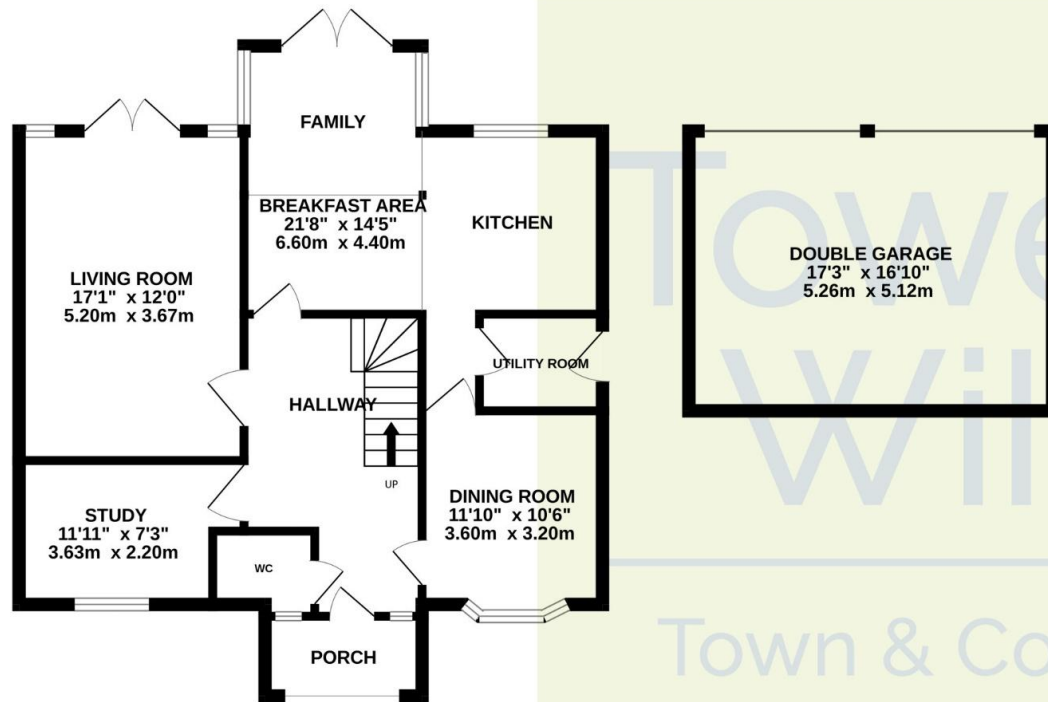
Outside:

Outside, one of the property's true selling features is the enviable countryside outlook enjoyed from the front aspect. A detached double garage with single double electric door with remote control operation, power and light is approached by an extensive larger-than-average driveway providing parking for several vehicles. The enclosed rear garden has been attractively landscaped for low maintenance living and comprises lawned areas, patio seating space, planted borders, outside tap, outside lighting and external power points.

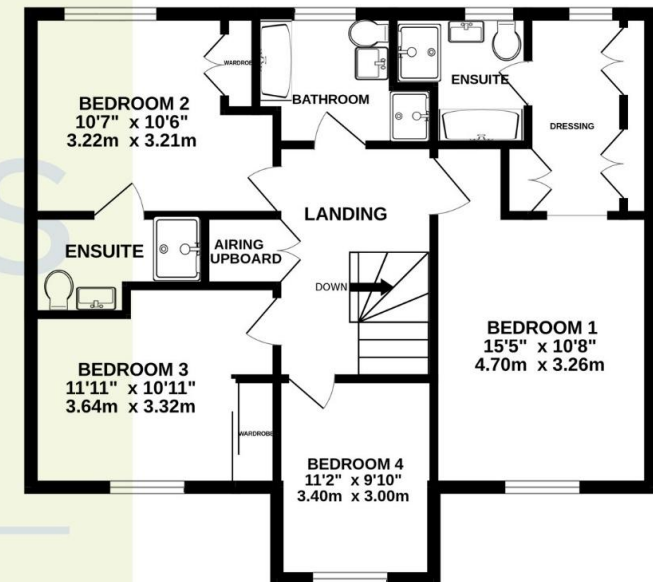
This exceptional family home combines stylish modern living with a peaceful edge-of-development position and must be viewed to fully appreciate the quality, space and stunning setting on offer.



GROUND FLOOR



1ST FLOOR



Whilst every attempt has been made to ensure the accuracy of the floorplan contained here, measurements of doors, windows, rooms and any other items are approximate and no responsibility is taken for any error, omission or mis-statement. This plan is for illustrative purposes only and should be used as such by any prospective purchaser. The services, systems and appliances shown have not been tested and no guarantee as to their operability or efficiency can be given.
Made with Metropix ©2026

T: 01935 577032 E: info@towerswills.co.uk

The White House 114 Hendford Hill, Yeovil, Somerset BA20 2RF

www.towerswills.co.uk

Please Note No tests have been undertaken of any of the services and any intending purchasers should satisfy themselves in this regard. Towers Wills Ltd for themselves and for the vendor of this property whose agents they are, give notice that, (i) these particulars do not constitute any part of an offer or contract, (ii) all statements contained within these particulars are made without responsibility on the part of Towers Wills or the vendor, (iii) whilst made in good faith, none of the statements contained within these particulars are to be relied upon as a statement of representation or fact, (iv) any intending purchaser must satisfy him/herself by inspection or otherwise as to the correctness of each of the statements contained within these particulars, (v) the vendor does not make or give either Towers Wills or any person in their employment any authority to make or give representation or warranty whatsoever in relation to this property. Photographs / Floor Plans Photographs are reproduced for general information and it must not be inferred that any item is included for sale with this property. Please note floor plans are not to scale and are for identification purposes only. The photographs used in these particulars may have been taken with the use of a wide angle lens. If you have any queries as to the size of the accommodation or plot, please address these with the agent prior to making an appointment to view.