

Towers Wills

Town & Country

📞 01935 577 032 | 01460 298 530 | ✉ info@towerswills.co.uk



22, Camborne Street, Yeovil, Somerset BA21 5DF Offers Over **£240,000**

Towers Wills are delighted to present to the market this generously proportioned three-bedroom end-of-terrace home, ideally situated in a convenient location close to Yeovil Town Centre, its extensive range of amenities, and offering excellent commuter links to Sherborne and the surrounding areas.

Accommodation:

The property provides spacious and well-appointed accommodation throughout and briefly comprises: a welcoming entrance hallway, a spacious lounge/diner featuring a distinctive squared archway opening into an impressive kitchen/diner — undoubtedly the focal point of the home — fitted with a comprehensive range of modern units, integrated appliances, and French doors leading onto the rear garden. Additional ground floor accommodation includes a practical utility room and a downstairs WC.

To the first floor are three well-proportioned bedrooms, comprising two generous double bedrooms and single bedroom, all served by a substantial family bathroom.

Outside:

Externally, the property benefits from a large rear garden, incorporating a patio seating area and extensive lawn, ideally suited to family living and outdoor entertaining. At the rear of the garden, access is provided via a lane from Camborne Place leading to a small parking area and a single garage. The property further benefits from additional driveway parking to the front for one vehicle.

An internal viewing is highly recommended in order to fully appreciate the space, versatility, and high standard of accommodation offered by this exceptional family home.

Key Features

- End of Terrace
- Three Bedrooms
- Well Presented
- Large Rear Garden
- Parking Area & Garage

Contact Us

Towers Wills Estate Agents - Yeovil

114, Hendford Hill

Yeovil

Somerset

BA202RF

T: 01935 577032

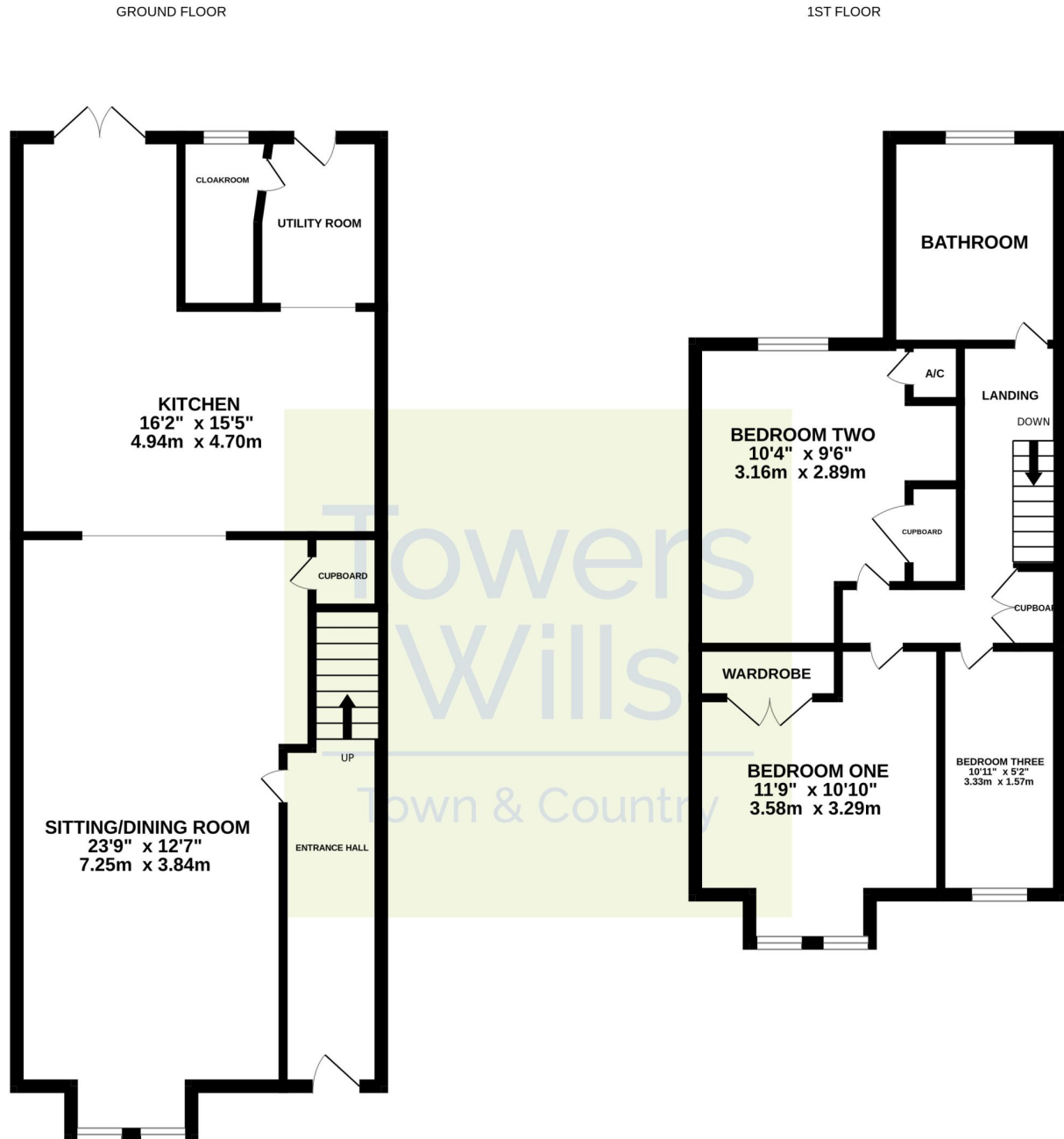
E: info@towerswills.co.uk

Energy Efficiency

Score	Energy rating	Current	Potential
92+	A		
81-91	B		83 B
69-80	C		
55-68	D	65 D	
39-54	E		
21-38	F		
1-20	G		



Floor Plan



Whilst every attempt has been made to ensure the accuracy of the floorplan contained here, measurements of doors, windows, rooms and any other items are approximate and no responsibility is taken for any error, omission or mis-statement. This plan is for illustrative purposes only and should be used as such by any prospective purchaser. The services, systems and appliances shown have not been tested and no guarantee as to their operability or efficiency can be given.
Made with Metropix ©2026

Please Note No tests have been undertaken of any of the services and any intending purchasers should satisfy themselves in this regard. Towers Wills Ltd for themselves and for the vendor of this property whose agents they are, give notice that, (i) these particulars do not constitute any part of an offer or contract, (ii) all statements contained within these particulars are made without responsibility on the part of Towers Wills or the vendor, (iii) whilst made in good faith, none of the statements contained within these particulars are to be relied upon as a statement of representation or fact, (iv) any intending purchaser must satisfy him/herself by inspection or otherwise as to the correctness of each of the statements contained within these particulars, (v) the vendor does not make or give either Towers Wills or any person in their employment any authority to make or give representation or warranty whatsoever in relation to this property.

Photographs / Floor Plans Photographs are reproduced for general information and it must not be inferred that any item is included for sale with this property. Please note

Towers Wills

The White House, 114 Hendford Hill, Yeovil BA20 2RF

Yeovil 01935 577032 / South Petherton 01460 298530

info@towerswills.co.uk | www.towerswills.co.uk