

Towers Wills

Town & Country

📞 01935 577 032 | 01460 298 530 | ✉ info@towerswills.co.uk



22, Forts Orchard, Chilthorne Domer, Yeovil,
Somerset BA22 8RH

£425,000

Towers Wills are delighted to welcome to the market this impressive four-bedroom detached family home, occupying an enviable position within a popular residential development in the highly desirable village of Chilthorne Domer. Situated approximately three miles from Yeovil town centre and enjoying easy access to beautiful countryside walks, this substantial property offers generous living accommodation throughout, together with a wonderful rear aspect overlooking open fields.

Accommodation:

Upon entering the property, a spacious and welcoming entrance hallway sets the tone for the accommodation on offer. The ground floor provides excellent versatility for modern family living, comprising a separate dining room and comfortable principal lounge featuring double doors opening into a delightful sunroom. Enjoying views across the garden, the sunroom creates a seamless connection between the indoor and outdoor spaces and leads through to a well-appointed kitchen, fitted with an excellent range of units and generous worktop space.

To the first floor, the property continues to impress with four well-proportioned bedrooms. The principal bedroom benefits from its own en-suite shower room, while the remaining bedrooms are served by a contemporary and spacious family bathroom.

Outside:

Externally, the property enjoys driveway parking to the front for two vehicles, along with access to a single garage. The garage also benefits from a pedestrian door providing convenient access from the rear garden.

A particular feature of this home is the superb rear garden. Enjoying a sunny aspect and backing directly onto open fields, the garden offers a high degree of privacy and a wonderful outlook across the surrounding countryside. This attractive outdoor space provides the perfect setting for family entertaining, al fresco dining and enjoying the warmer months.

Properties in such a favourable position within this sought-after village are rarely available, and an early viewing is strongly recommended to fully appreciate both the generous accommodation and the exceptional setting this wonderful family home has to offer.

Key Features

- Detached Family Home
- Four Bedrooms
- Master En-suite
- Gardens
- Driveway & Garage
- Countryside Views

Contact Us

Towers Wills Estate Agents - Yeovil

114, Hendford Hill
Yeovil

Somerset
BA202RF

T: 01935 577032

E: info@towerswills.co.uk

Energy Efficiency

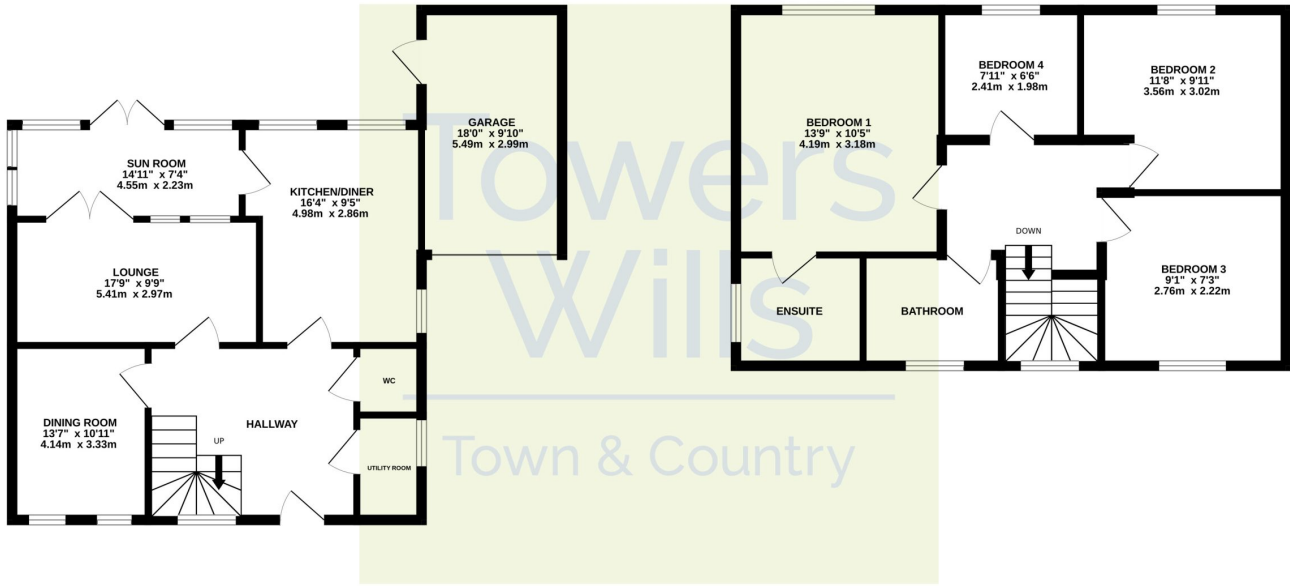
Score	Energy rating	Current	Potential
92+	A		
81-91	B		84 B
69-80	C	74 C	
55-68	D		
39-54	E		
21-38	F		
1-20	G		



Floor Plan

GROUND FLOOR

1ST FLOOR



Whilst every attempt has been made to ensure the accuracy of the floorplan contained here, measurements of doors, windows, rooms and any other items are approximate and no responsibility is taken for any error, omission or mis-statement. This plan is for illustrative purposes only and should be used as such by any prospective purchaser. The services, systems and appliances shown have not been tested and no guarantee as to their operability or efficiency can be given.
Made with Metropix ©2026

Please Note No tests have been undertaken of any of the services and any intending purchasers should satisfy themselves in this regard. Towers Wills Ltd for themselves and for the vendor of this property whose agents they are, give notice that, (i) these particulars do not constitute any part of an offer or contract, (ii) all statements contained within these particulars are made without responsibility on the part of Towers Wills or the vendor, (iii) whilst made in good faith, none of the statements contained within these particulars are to be relied upon as a statement of representation or fact, (iv) any intending purchaser must satisfy him/herself by inspection or otherwise as to the correctness of each of the statements contained within these particulars, (v) the vendor does not make or give either Towers Wills or any person in their employment any authority to make or give representation or warranty whatsoever in relation to this property.

Photographs / Floor Plans Photographs are reproduced for general information and it must not be inferred that any item is included for sale with this property. Please note floor plans are not to scale and are for identification purposes only. The photographs used in these particulars may have been taken with the use of a wide angle lens. If you have any queries as to the size of the accommodation or plot, please address these with the agent prior to making an appointment to view