





**Towers
Wills**

Town & Country

6 Drakes Meadow, East Coker, Yeovil, Somerset, BA22 9EX

£500,000

 01935 577 032 | 01460 298 530 |  info@towerswills.co.uk



Towers Wills welcome to the market a beautifully presented four-bedroom detached family home in the highly sought-after village of East Coker. Offering four double bedrooms, including a master bedroom with en-suite, spacious reception rooms including a living room with wood burner, a modern kitchen/breakfast room, detached double garage, driveway parking and an attractive low maintenance rear garden, this superb home is perfectly suited to modern family living situated in a tucked away position of this highly sought after village.

- *Detached Family Home
- *Four Bedrooms
- *Master Bedroom with En-suite
- *Detached Double Garage
- *Driveway Parking
- *Enclosed Low Maintenance Garden
- *Sought-after Village Location



Score	Energy rating	Current	Potential
92+	A		
81-91	B		
69-80	C		80 C
55-68	D	64 D	
39-54	E		
21-38	F		
1-20	G		



Accommodation:

Tucked away within the highly desirable village of East Coker, Drake's Meadow is a beautifully presented four-bedroom detached family home, perfectly designed for modern family living. Offering generous and versatile accommodation throughout, this impressive home combines stylish interiors with practical living spaces, ideal for both everyday life and entertaining.

The welcoming reception hallway sets the tone for the accommodation beyond. At the heart of the home is a spacious living room featuring a wood-burning stove, creating the perfect setting for cosy evenings during the winter months. You will be equally prepared for the warmer seasons with bi-folding doors open directly onto the rear garden, seamlessly blending indoor and outdoor living and providing a wonderful space to enjoy.

A separate dining room offers an elegant setting for family meals and entertaining guests, while the contemporary kitchen/breakfast room is superbly appointed with a comprehensive range of wall, base and drawer units complemented by granite work surfaces. Integrated appliances include an induction hob with extractor hood over, double electric oven and wine chiller, together with plumbing for a dishwasher and washing machine and space for an American-style fridge/freezer. A convenient ground floor cloakroom completes the downstairs accommodation.





To the first floor, the property continues to impress with four well-proportioned double bedrooms. The principal bedroom benefits from its own en-suite shower room, whilst the remaining bedrooms are served by a stylish family bathroom fitted with a bath, wash hand basin and WC.

Outside:

Outside, the property enjoys excellent kerb appeal with a driveway to the rear providing ample off-road parking and leading to a detached double garage featuring twin up-and-over doors, power, lighting and a personal door to the garden. The rear garden has been thoughtfully landscaped for ease of maintenance, offering generous patio seating areas, artificial lawn, attractive slate borders, outside lighting, a tap and gated access to the driveway, creating an ideal environment for relaxing, entertaining and family enjoyment.



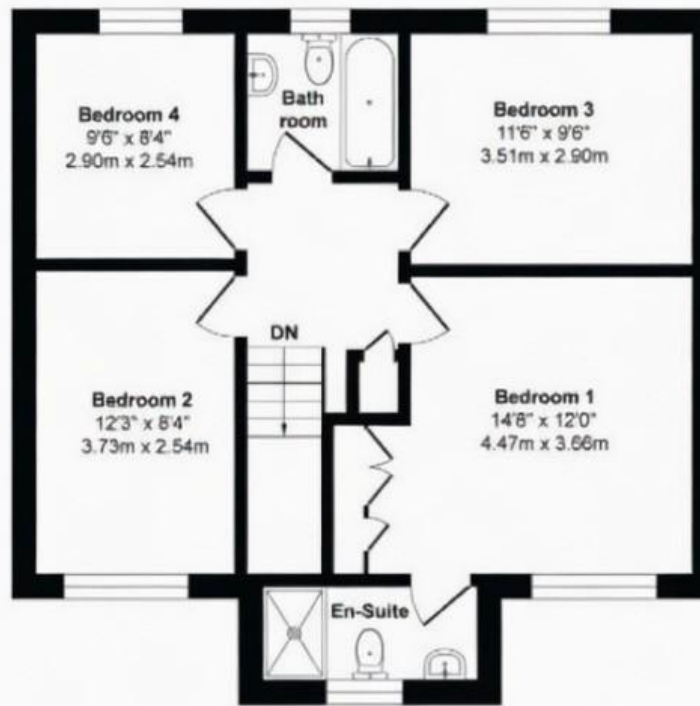
Situation:

East Coker remains one of Somerset's most sought-after villages, renowned for its strong sense of community and picturesque countryside surroundings. Residents enjoy a range of local amenities including the popular village café, a highly regarded primary school, village hall and the well-loved Helyar Arms public house, offering excellent food and a welcoming atmosphere. With beautiful rural walks on the doorstep and the market town of Yeovil just a short drive away, East Coker perfectly balances village charm with everyday convenience.

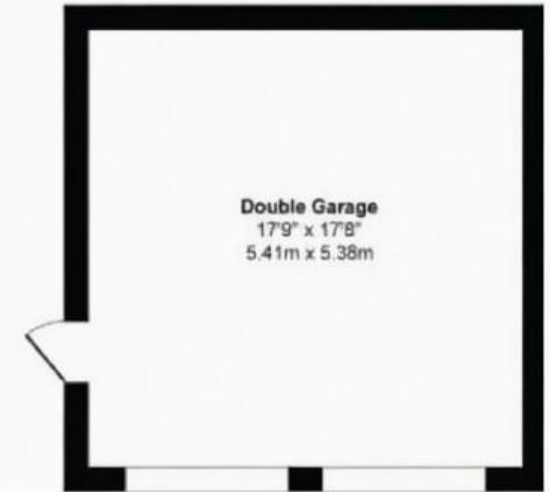




Ground Floor
Approximate Floor Area
655 sq. ft
(60.95 sq. m)



First Floor
Approximate Floor Area
655 sq. ft
(60.95 sq. m)



Garage
Approximate Floor Area
313 sq. ft
(29.10 sq. m)

Approximate Gross Internal Floor Area 1623 sq. ft / 151.00sq. m

T: 01935 577032 E: info@towerswills.co.uk

The White House 114 Hendford Hill, Yeovil, Somerset BA20 2RF

www.towerswills.co.uk

Please Note No tests have been undertaken of any of the services and any intending purchasers should satisfy themselves in this regard. Towers Wills Ltd for themselves and for the vendor of this property whose agents they are, give notice that, (i) these particulars do not constitute any part of an offer or contract, (ii) all statements contained within these particulars are made without responsibility on the part of Towers Wills or the vendor, (iii) whilst made in good faith, none of the statements contained within these particulars are to be relied upon as a statement of representation or fact, (iv) any intending purchaser must satisfy him/herself by inspection or otherwise as to the correctness of each of the statements contained within these particulars, (v) the vendor does not make or give either Towers Wills or any person in their employment any authority to make or give representation or warranty whatsoever in relation to this property. Photographs / Floor Plans Photographs are reproduced for general information and it must not be inferred that any item is included for sale with this property. Please note floor plans are not to scale and are for identification purposes only. The photographs used in these particulars may have been taken with the use of a wide angle lens. If you have any queries as to the size of the accommodation or plot, please address these with the agent prior to making an appointment to view.