

# Towers Wills

Town & Country

📞 01935 577 032 | 01460 298 530 | ✉ info@towerswills.co.uk



3, Summerhouse Terrace, Yeovil, Somerset BA20  
2NL

**£290,000**

Towers Wills welcome to the market is stunning four bedroom home which must be viewed to be fully appreciated conveniently located within walking distance of Yeovil town centre and beautiful countryside walks at Nine Springs Country Park from your doorstep, comprising hallway, cloak WC, feature kitchen diner family area, living room, four bedrooms, en suite bathroom, garden, allocated parking, and NO ONWARD CHAIN.

### **Accommodation:**

Perfectly positioned within easy walking distance of Yeovil town centre, Leonardo, Yeovil District Hospital and the beautiful Nine Springs Country Park, this exceptional four-bedroom detached home effortlessly combines modern luxury with everyday convenience. Arranged over three thoughtfully designed floors and offered to the market with no onward chain, this beautifully presented home is ideal for growing families and professionals seeking spacious, high-quality accommodation in a prime location.

From the moment you step inside, the impeccable finish and attention to detail are immediately apparent. At the heart of the home lies an impressive open-plan kitchen, dining and family room, designed with both entertaining and family life in mind. The contemporary kitchen is fitted with an extensive range of stylish wall, base and drawer units, complemented by luxurious granite worktops and a comprehensive range of integrated appliances including a fridge freezer, dishwasher, double electric oven and induction hob with extractor over. A large central island with breakfast bar and twin undermounted stainless steel sinks creates a striking focal point, while the generous dining and family areas comfortably accommodate both formal dining and relaxed seating. French doors open directly onto the enclosed rear garden, seamlessly connecting indoor and outdoor living. Completing the ground floor is a practical utility cupboard with plumbing for a washing machine, space for a tumble dryer and a cloakroom/WC.

The first floor offers a wonderfully spacious living room, providing the perfect retreat to relax and unwind. The principal bedroom enjoys fitted wardrobes and a stylish en-suite shower room comprising a walk-in shower, vanity wash hand basin, WC, heated towel rail and extractor fan.

On the second floor are three further well-proportioned bedrooms, all served by a modern family bathroom fitted with a panelled bath with shower over, wash hand basin, WC and extractor fan, making this floor ideal for children, guests or those working from home.

### **Outside:**

Outside, the enclosed rear garden has been designed for low-maintenance living, featuring an attractive granite stone patio perfect for alfresco dining and entertaining, with gated rear access. The property also benefits from allocated parking for one vehicle.

Offering contemporary style, generous living space and an enviable location close to both excellent amenities and beautiful countryside walks, this superb home represents a fantastic opportunity to enjoy the very best of modern living in one of Yeovil's most convenient locations.

## Key Features

- NO ONWARD CHAIN
- Immaculately Presented Throughout
- Four Bedrooms
- Close to Yeovil Town Centre
- Allocated Parking
- Rear Garden

## Contact Us

### **Towers Wills Estate Agents - Yeovil**

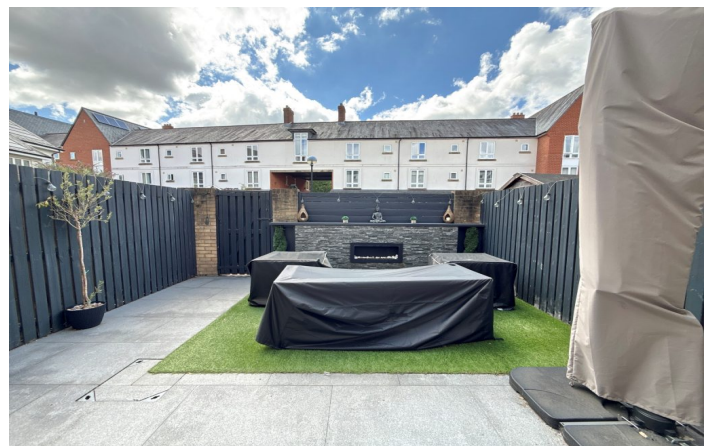
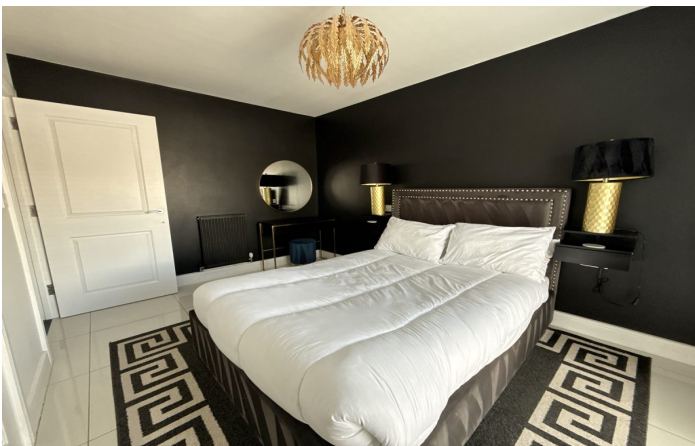
114, Hendford Hill  
Yeovil

Somerset

BA202RF

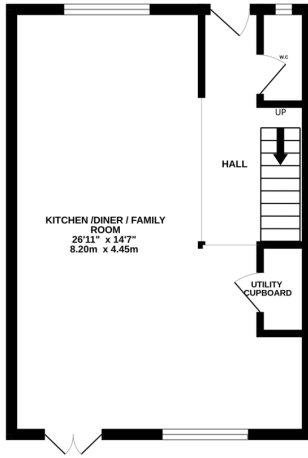
T: 01935 577032

E: [info@towerswills.co.uk](mailto:info@towerswills.co.uk)

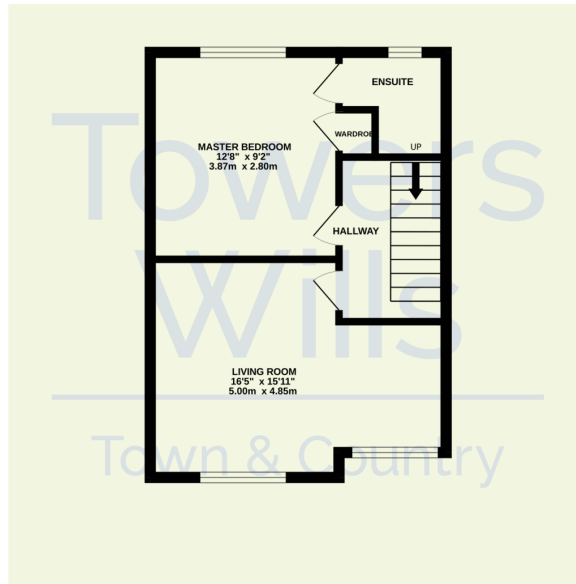


# Floor Plan

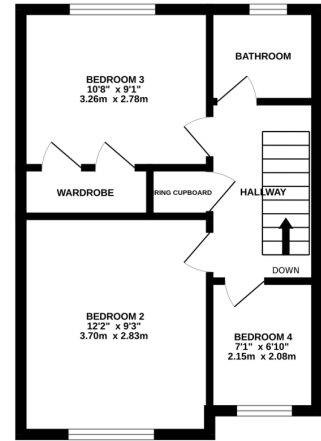
GROUND FLOOR



1ST FLOOR



2ND FLOOR



Whilst every attempt has been made to ensure the accuracy of the floorplan contained here, measurements of doors, windows, rooms and any other items are approximate and no responsibility is taken for any error, omission or mis-statement. This plan is for illustrative purposes only and should be used as such by any prospective purchaser. The services, systems and appliances shown have not been tested and no guarantee as to their operability or efficiency can be given.  
Made with Metropix ©2026

Please Note No tests have been undertaken of any of the services and any intending purchasers should satisfy themselves in this regard. Towers Wills Ltd for themselves and for the vendor of this property whose agents they are, give notice that, (i) these particulars do not constitute any part of an offer or contract, (ii) all statements contained within these particulars are made without responsibility on the part of Towers Wills or the vendor, (iii) whilst made in good faith, none of the statements contained within these particulars are to be relied upon as a statement of representation or fact, (iv) any intending purchaser must satisfy him/herself by inspection or otherwise as to the correctness of each of the statements contained within these particulars, (v) the vendor does not make or give either Towers Wills or any person in their employment any authority to make or give representation or warranty whatsoever in relation to this property.

Photographs / Floor Plans Photographs are reproduced for general information and it must not be inferred that any item is included for sale with this property. Please note floor plans are not to scale and are for identification purposes only. The photographs used in these particulars may have been taken with the use of a wide angle lens. If you have any queries as to the size of the accommodation or plot, please address these with the agent prior to making an appointment to view