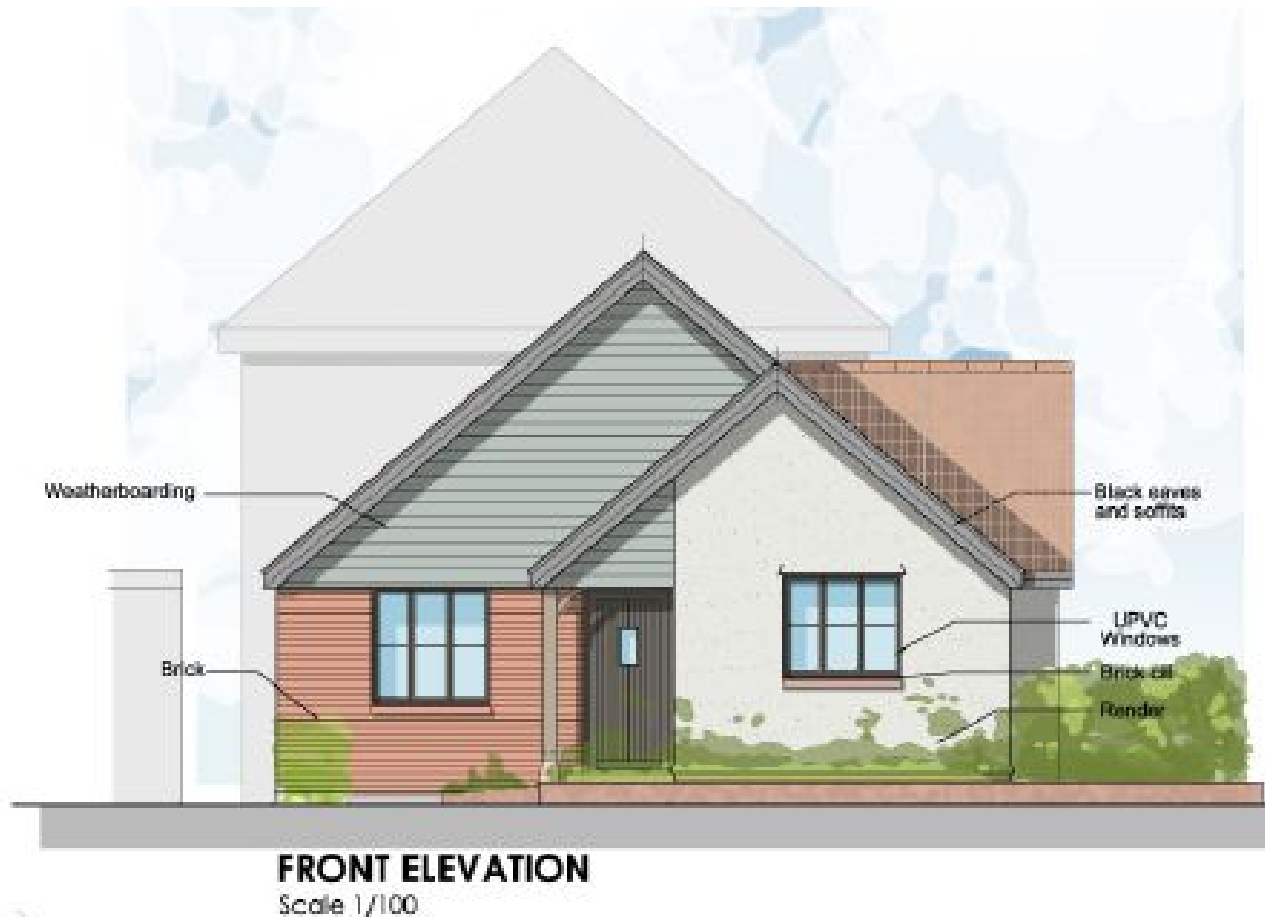


# Towers Wills

Town & Country

📞 01935 577 032 | 01460 298 530 | ✉ info@towerswills.co.uk



2a, Clifton View, Yeovil, Somerset BA22 9TU

Guide Price **£200,000**

Towers Wills welcome to the market this brand new two bedroom detached bungalow constructed by quality builder HM Construction UK. Situated in this popular village with easy links to Yeovil, Sherborne and Dorchester. The accommodation briefly comprises: hall, kitchen, lounge diner, two double bedrooms, bathroom, garden, driveway and garage.

**Reception Hallway**

Door to the front.

**Kitchen** 3.10m x 4.30m

Specification TBC..... with windows to both front and side.

**Lounge Diner** 4.10 x 5.50m

A spacious living area with bi-folding doors opening out to the rear garden.

**Master Bedroom** 3.60m x 2.90m

Window to the front and built-in wardrobe.

**Bedroom Two** 3.80m x 2.70m

Window to the side and built-in wardrobe.

**Bathroom** 1.90m x 2.80m

Suite comprising of bath with shower over, wash hand basin, w.c, window to the side and tiling.

**Driveway**

Providing off road parking.

**Garage**

With 'up and over' door, power and light.

**Garden**

An enclosed rear garden with patio area from the bi-folding doors. Area laid to lawn.

**Surrounding Area**

Barwick is a charming South Somerset village which enjoys a semi-rural setting approximately 2 miles from Yeovil town centre. Within the village amenities include a church, a restaurant, primary school and a regular bus service, with a public house available in the adjoining village of Stoford, where Yeovil Junction train station can be found. Transport links are good with the A37 within easy reach and the A303 trunk road nearby. Yeovil Junction train station offers regular rail services to London (Waterloo) and Exeter with services to Bristol and Weymouth operating from Yeovil Pen Mill Station.

Key Features

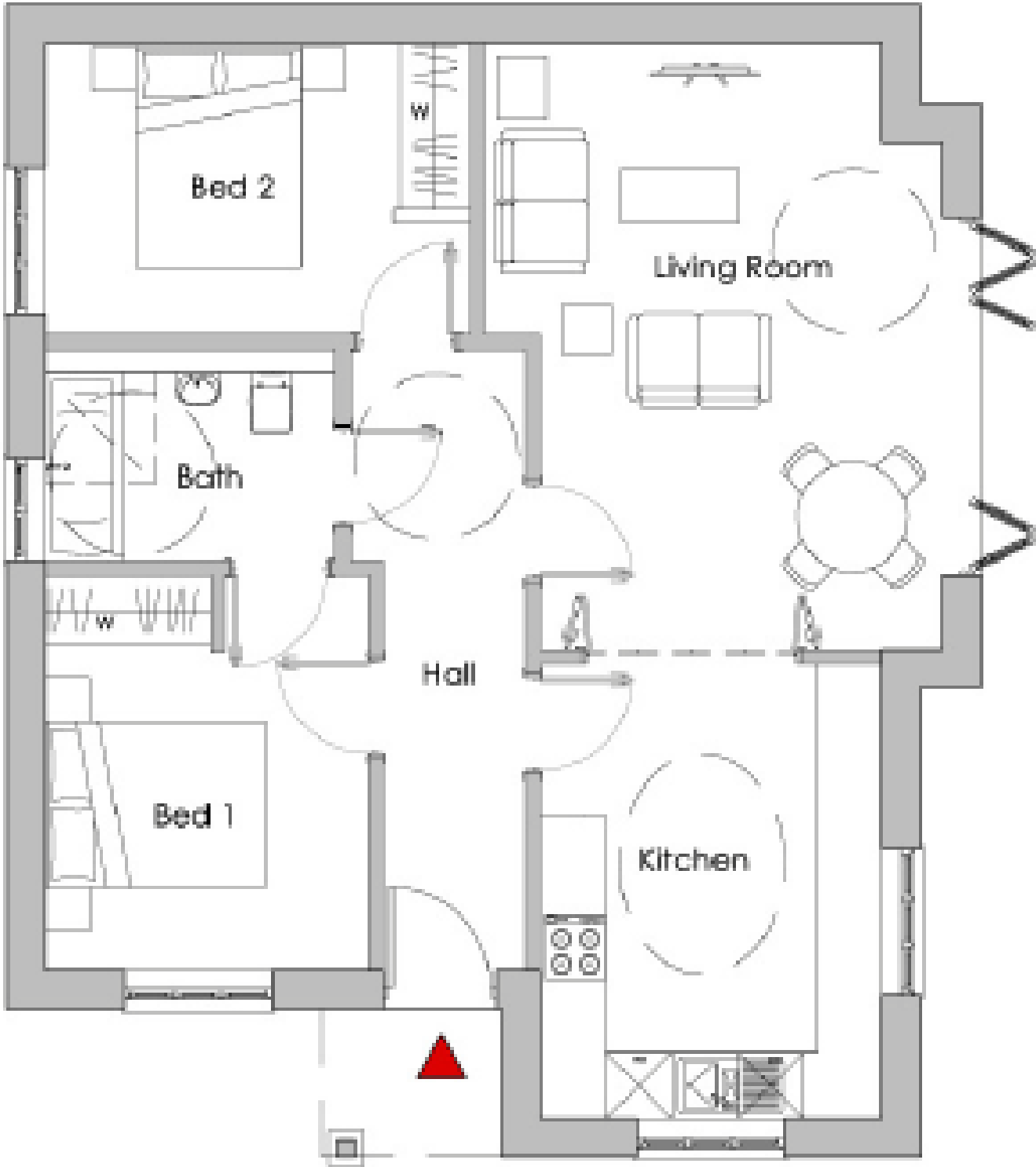
- New build
- Popular village location
- Garage
- Driveway
- Two double bedrooms
- Modern detached bungalow

Contact Us

**Towers Wills Estate Agents - Yeovil**  
114, Hendford Hill  
Yeovil  
Somerset  
BA202RF  
T: 01935 577032  
E: [info@towerswills.co.uk](mailto:info@towerswills.co.uk)



# Floor Plan



## GROUND FLOOR PLAN

Scale 1/100  
2 Bed 4 Person 67.5m<sup>2</sup>



themselves and for the vendor of this property whose agents they are, give notice that, (i) these particulars do not constitute any part of an offer or contract, (ii) all statements contained within these particulars are made without responsibility on the part of Towers Wills or the vendor , (iii) whilst made in good faith, none of the statements contained within these particulars are to be relied upon as a statement of representation or fact , (iv) any intending purchaser must satisfy him/herself by inspection or otherwise as to the correctness of each of the statements contained within these particulars, (v) the vendor does not make or give either Towers Wills or any person in their employment any authority to make or give representation or warranty whatsoever in relation to this property.

Photographs / Floor Plans Photographs are reproduced for general information and it must not be inferred that any item is included for sale with this property. Please note floor plans are not to scale and are for identification purposes only. The photographs used in these particulars may have been taken with the use of a wide angle lens. If you have any queries as to the size of the accommodation or plot, please address these with the agent prior to making an appointment to view

**Towers Wills**

The White House, 114 Hendford Hill, Yeovil BA20 2RF

Yeovil 01935 577032 / South Petherton 01460 298530  
[info@towerswills.co.uk](mailto:info@towerswills.co.uk) | [www.towerswills.co.uk](http://www.towerswills.co.uk)