

# Towers Wills

Town & Country

📞 01935 577 032 | 01460 298 530 | ✉ info@towerswills.co.uk



**16, Bishops Walk, Yeovil, Somerset BA22 8NS**

**£180,000**

Towers Wills welcome to the market this spacious two bedroom end of terrace property situated in a popular village of Ilchester and within easy reach of local shops and amenities. The property briefly comprises of: hall, lounge/diner, kitchen, two double bedrooms, bathroom, front and rear gardens, garage and parking.

### Reception Hallway

Door to the front.

### Lounge Diner 4.82m x 4.57m

A spacious open plan living area with door to the rear garden, window to the rear, under stairs storage area.

### Kitchen 3.07m x 3.17m

Comprising of a range of wall, base and drawer units, work surfacing with inset stainless steel sink/drainers, electric cooker point with cookerhood over, plumbing for washing machine, space for fridge/freezer, boiler cupboard and window to the front.

### First Floor Landing

Stairs from lounge diner, loft access and airing cupboard.

### Bedroom One 3.70m x 3.08m

Two windows to the rear.

### Bedroom Two 3.09m x 2.67m

Window to the front.

### Bathroom 2.60m x 1.74m

Bathroom suite comprising of bath, wash hand basin, wc, tiling and window to the front.

### Outside

To the front of the property is an area of garden with path leading to the entrance.

To the rear of the property is an enclosed garden with side access, majority laid to lawn with pond and patio area with pergola over. To the side of the property is a garage with a parking space in front for one vehicle.

### Garage

With 'up and over' door.

## Key Features

- Sought after village location
- Two large double bedrooms
- Driveway
- Garage
- Some updating required

## Contact Us

### Towers Wills Estate Agents - Yeovil

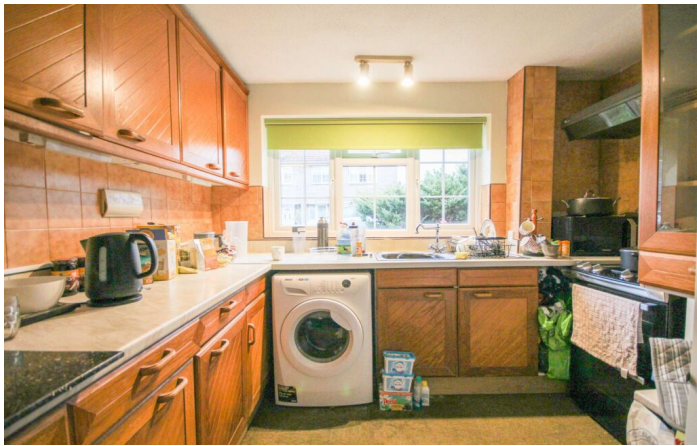
114, Hendford Hill  
Yeovil

Somerset

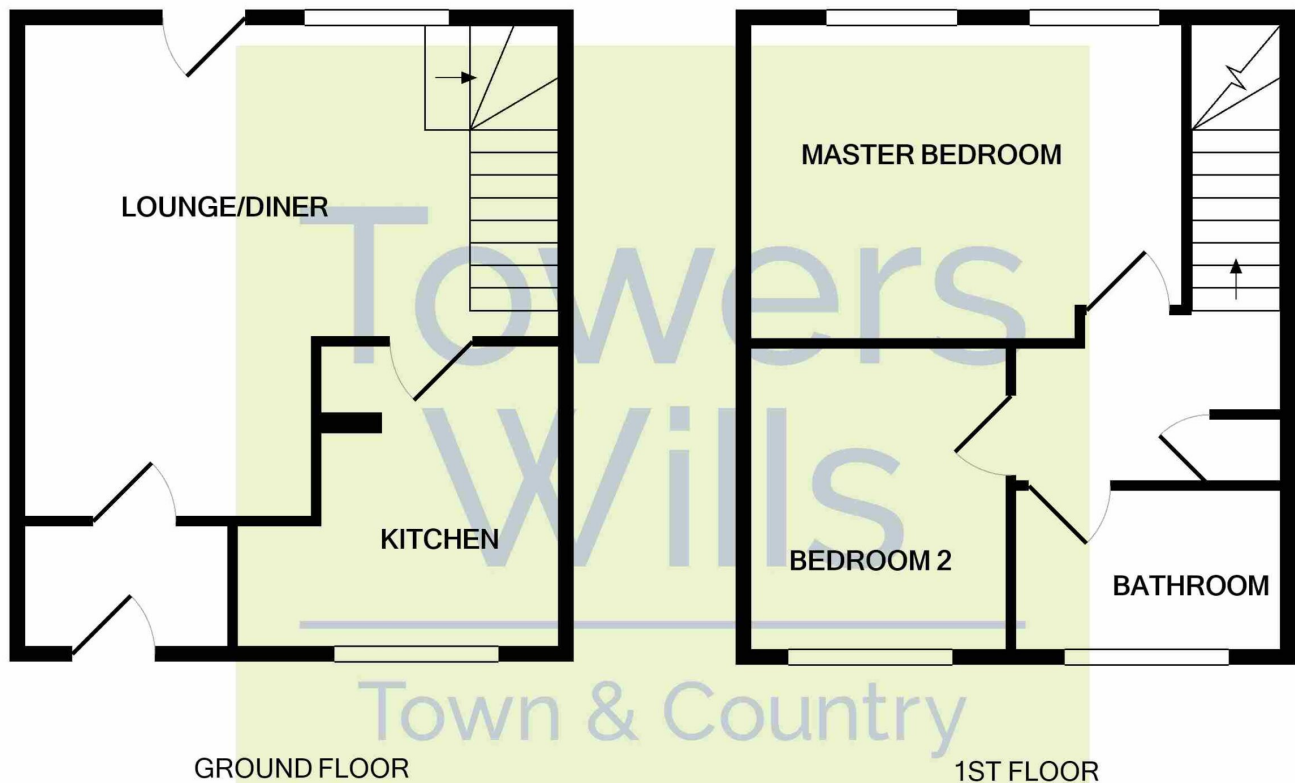
BA202RF

T: 01935 577032

E: [info@towerswills.co.uk](mailto:info@towerswills.co.uk)



# Floor Plan



Whilst every attempt has been made to ensure the accuracy of the floor plan contained here, measurements of doors, windows, rooms and any other items are approximate and no responsibility is taken for any error, omission, or mis-statement. This plan is for illustrative purposes only and should be used as such by any prospective purchaser. The services, systems and appliances shown have not been tested and no guarantee as to their operability or efficiency can be given  
Made with Metropix ©2021

Please Note No tests have been undertaken of any of the services and any intending purchasers should satisfy themselves in this regard. Towers Wills Ltd for themselves and for the vendor of this property whose agents they are, give notice that, (i) these particulars do not constitute any part of an offer or contract, (ii) all statements contained within these particulars are made without responsibility on the part of Towers Wills or the vendor, (iii) whilst made in good faith, none of the statements contained within these particulars are to be relied upon as a statement of representation or fact, (iv) any intending purchaser must satisfy him/herself by inspection or otherwise as to the correctness of each of the statements contained within these particulars, (v) the vendor does not make or give either Towers Wills or any person in their employment any authority to make or give representation or warranty whatsoever in relation to this property.

Photographs / Floor Plans Photographs are reproduced for general information and it must not be inferred that any item is included for sale with this property. Please note floor plans are not to scale and are for identification purposes only. The photographs used in these particulars may have been taken with the use of a wide angle lens. If you have any queries as to the size of the accommodation or plot, please address these with the agent prior to making an appointment to view

**Towers Wills**

The White House, 114 Hendford Hill, Yeovil BA20 2RF

Yeovil 01935 577032 / South Petherton 01460 298530

[info@towerswills.co.uk](mailto:info@towerswills.co.uk) | [www.towerswills.co.uk](http://www.towerswills.co.uk)