

Towers Wills

Town & Country

📞 01935 577 032 | 01460 298 530 | ✉ info@towerswills.co.uk



5, Portman Ct, East Chinnoek, Yeovil, Somerset BA22 9DR

£280,000

This stunning three bed end of terrace barn conversion is situated in the popular village of East Chinnoek, just a 15-minute drive from Yeovil and Crewkerne. The property includes a delightful south facing rear garden from which to enjoy countryside views while inside there is a good-sized lounge/diner, separate kitchen, downstairs WC, three double bedrooms and family bathroom. The property comes with garage and parking for two vehicles. One not to miss!

Hallway

Double glazed door to the front, radiator and under stairs cupboard. Doors to cloakroom, lounge/diner and kitchen.

Kitchen

Fitted with a range of wall, base and drawer units, work surfacing with inset stainless steel sink drainer unit, central heating boiler, space for tumble dryer, washing machine and dishwasher, integrated fridge freezer, integrated five ring gas hob, electric oven and double glazed window to the front.

Cloakroom

Includes w.c, wash hand basin and radiator.

Lounge Diner

Double glazed window and French doors to the rear, gas fire with chimney cap and two radiators.

First Floor Landing

Radiator and loft hatch (part boarded, insulated and ladder).

Bedroom One

Double glazed window to the rear and radiator.

Bedroom Two

Two double glazed skylights to the rear and radiator.

Bedroom Three

Double glazed skylight to the front and radiator.

Bathroom

Suite comprising bath with electric shower over, wash hand basin, w.c, heated towel rail, under floor heating, shaver point and double glazed skylight to the front.

Rear Garden

The rear garden is south-westerly facing and is mainly laid to lawn with patio area, outside tap, LPG tank and side gate allowing access to the garage.

Garage

With 'up and over' door, power, light and storage in the rafters.

Parking

There is parking for two vehicles; one allocated to the front and one in front of the garage.

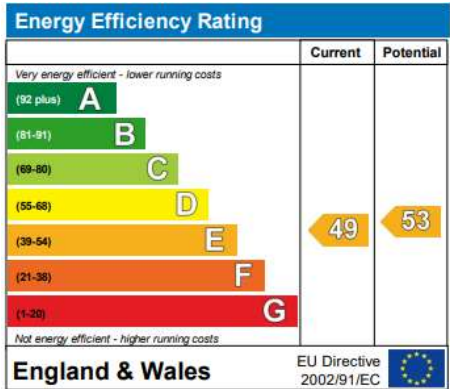
Key Features

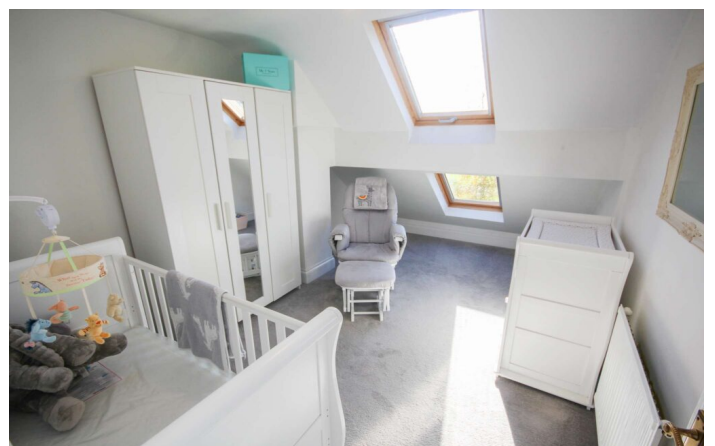
- VIDEO TOUR AVAILABLE!
- Three double bedrooms
- Beautiful countryside views
- Stunning home
- Garage
- Tucked away position within popular village

Contact Us

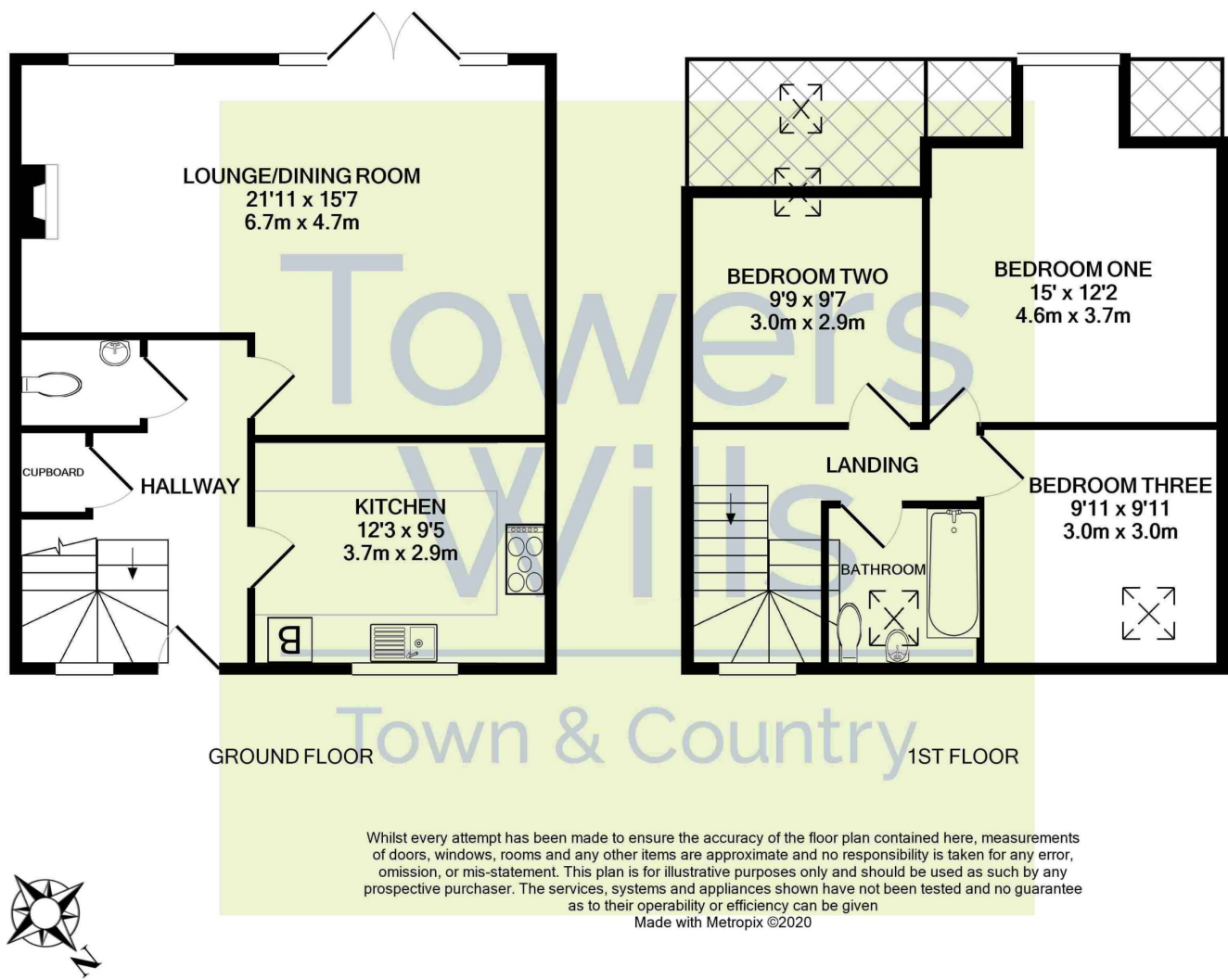
Towers Wills Estate Agents - Yeovil
114, Hendford Hill
Yeovil
Somerset
BA202RF
T: 01935 577032
E: info@towerswills.co.uk

Energy Efficiency





Floor Plan



Please Note No tests have been undertaken of any of the services and any intending purchasers should satisfy themselves in this regard. Towers Wills Ltd for themselves and for the vendor of this property whose agents they are, give notice that, (i) these particulars do not constitute any part of an offer or contract, (ii) all statements contained within these particulars are made without responsibility on the part of Towers Wills or the vendor, (iii) whilst made in good faith, none of the statements contained within these particulars are to be relied upon as a statement of representation or fact, (iv) any intending purchaser must satisfy him/herself by inspection or otherwise as to the correctness of each of the statements contained within these particulars, (v) the vendor does not make or give either Towers Wills or any person in their employment any authority to make or give representation or warranty whatsoever in relation to this property.

Photographs / Floor Plans Photographs are reproduced for general information and it must not be inferred that any item is included for sale with this property. Please note floor plans are not to scale and are for identification purposes only. The photographs used in these particulars may have been taken with the use of a wide angle lens. If you have any queries as to the size of the accommodation or plot, please address these with the agent prior to making an appointment to view